

1

841

BLOCKBUSTER

Herd Bulls

Breeder: COTTAGE FARM
 DOB: 4/2/2005 BBUNo. C923817
 Sex: M PV: PV (DNA)
 Color: RED
 Horn: Polled
 DNA: US3000518 BT: BBU453



721 LE C755781

CLARK JONES FARMS

CJ'S SOUL MAN 168 RH C867835

CLARK JONES FARMS U 1/2 2/04 DNA US3000427 BT 7670A

SOULMANS MOMMA 928 LE C799411

CLARK JONES FARMS U 11/00 BT 8016A

** SPARTACUS 86/653 RH C317158

DAVID C BROWN BEEFMA U 1/3 5/93 DNA 9A BT 3116A

BOMB SHELL 396 LE C742387

COTTAGE FARM U 1/2 10/00 DNA 313359A BT 6758B

** SEX APPEAL 062/0 LH C453999

ADAIR U 1/2 4/92 BT 4709A

INDIVIDUAL PERFORMANCE RECORDS

	BW	WW	YW	SCROTAL	REA	%IMF	RIB FAT	RUMP FAT
RATIO			113		120	98	120	130
ADJ TRAIT			1363		16.56	3.61	0.37	0.61

EXPECTED PROGENY DIFFERENCES

ULTRASOUND EPDs

	BW	WW	YW	MILK	TM	SC	REA	%IMF	RIB FAT	RUMP FAT
EPD	1.8	15	32	-4	4	-0.3	0.42	0.2	0.11	0.34
ACC	0.88	0.86	0.84	0.44	-	0.68	0.73	0.76	0.71	0.71

BLOCKBUSTER

Blockbuster, a multiple BBU Trait Leader, is the proven sire combining Soulman and Spartacus breeding that has definitely been a steadfast commodity in our herd. His calves have made the performance difference both in our program and also in many herds around the country. As a trait leader, Blockbuster is #6 for REA and #9 for IMF showing his consistent carcass influence.

RELIANT

He's Polled and carrying some extreme thickness with an overall quality in pedigree. But more than that, Reliant is excelling in progeny produced in both heifers and bulls. Study his length, his thickness and combined with performance he is ready to make a difference. Reliant is our choice to continue our goal toward better beef.

2

8178

RELIANT

Herd Bulls

Breeder: CAIN CATTLE CO.
 DOB: 9/24/2008 BBUNo. C974366
 Sex: M PV: PV (DNA)
 Color: RED
 Horn: Horns
 DNA: 605361A



CJ'S SOUL MAN 168 RH C867835

CLARK JONES FARMS U 1/2 2/04 DNA US3000427 BT 7670A

BLOCKBUSTER 841 LE C923817

COTTAGE FARM DNA US3000518 PV BT BBU453

BOMB SHELL 396 LE C742387

COTTAGE FARM U 1/2 10/00 DNA 313359A BT 6758B

CJ'S SOUL MAN 168 RH C867835

CLARK JONES FARMS U 1/2 2/04 DNA US3000427 BT 7670A

550 LE C912923

CLARK JONES FARMS U 5/06 DNA 9000724116 PV

0-094 LH C884392

DUNKIN FARMS U 1/2 3/07 DNA 353335A BT BBU399

INDIVIDUAL PERFORMANCE RECORDS

	BW	WW	YW	SCROTAL	REA	%IMF	RIB FAT	RUMP FAT
RATIO	100	98	100		100	100	100	100
ADJ TRAIT	69	593	943		12.22	2.9	0.13	0.25

EXPECTED PROGENY DIFFERENCES

ULTRASOUND EPDs

	BW	WW	YW	MILK	TM	SC	REA	%IMF	RIB FAT	RUMP FAT
EPD	1.1	15	33	-2	5	0	0.42	0.1	0.03	0.2
ACC	0.6	0.66	0.62	0.23	-	0.47	0.39	0.42	0.39	0.39

3

305W6

CAINS CATALYST 305W6

Herd Bulls

Breeder: CAIN CATTLE CO.
 DOB: 2/10/2009 BBUNo. C985607
 Sex: M
 Color: RED PAINT
 Horn: Polled



537 LT C696529

CAIN

CATALYST 729 729 LT C775905

CAIN U 1/00 BT 7216A

610 LH C692462

LASATER U 1/2 8/98

CJ'S SOUL MAN 168 RH C867835

CLARK JONES FARMS U 1/2 2/04 DNA US3000427 BT 7670A

30/5 LH C916178

WILMOTH & SONS DNA 343882A PV BT BBU344

NIRVANA 96/1 LH C846745

WILMOTH & SONS U 5/03 DNA 314853A BT 7788A

INDIVIDUAL PERFORMANCE RECORDS

	BW	WW	YW	SCROTAL	REA	%IMF	RIB FAT	RUMP FAT
RATIO	110	92	97		97	112	146	
ADJ TRAIT	68	604	1021	33.87	11.42	3.01	0.31	

EXPECTED PROGENY DIFFERENCES

ULTRASOUND EPDs

	BW	WW	YW	MILK	TM	SC	REA	%IMF	RIB FAT	RUMP FAT
EPD	-2.1	3	8	7	8	0.2	-0.09	0.2	0.05	0.05
ACC	0.64	0.62	0.58	0.29	-	0.52	PE	PE	PE	PE



CAINS CATALYST 305W6



Proven sire, Cains Catalyst 305W6 brings together the female producing power of Catalyst and the performance punch of Soulman. Study this son of Catalyst and when you see his dam, 30/5 which is in this genetic gallery, you'll understand why we are so high on this bull. His full brother, 305W is working in the Rafter 4R herd in Florida. We look for more exciting things from both of these proven sires.

4

506

Herd Bulls

Breeder: COTTAGE FARM
 DOB: 4/4/2011 BBUNo. C1008377
 Sex: M PV: SV (DNA)
 Color: RED
 Horn: Horns
 DNA: US9001082129



** L2 CAPTAIN SUGAR 12/02 LR C857153

L TWO RANCH U 1/2 2/04 DNA 134A BT 7526A

CF SUGAR BRITCHES 040 LE C940465

COTTAGE FARM DNA 345274A

** OASIS 655 LE C828198

COTTAGE FARM U 1/2 2/04 DNA 251620A BT 7628A

** XCITE 497 LE C793242

COTTAGE FARM U 1/2 10/00 DNA 247A BT 6760A

175 LE C980952

COTTAGE FARM

** OASIS 655 LE C828198

COTTAGE FARM U 1/2 2/04 DNA 251620A BT 7628A

INDIVIDUAL PERFORMANCE RECORDS

	BW	WW	YW	SCROTAL	REA	%IMF	RIB FAT	RUMP FAT
RATIO	100	97	101		100	133	101	96
ADJ TRAIT	70	799	1238	37.85	12.06	2.8	0.32	0.53

EXPECTED PROGENY DIFFERENCES

ULTRASOUND EPDs

	BW	WW	YW	MILK	TM	SC	REA	%IMF	RIB FAT	RUMP FAT
EPD	0	20	31	-4	6	0.6	0.16	0.2	0.11	0.15
ACC	0.48	0.5	0.48	0.19	-	0.48	PE	PE	PE	PE

5

766Z

Bulls

Breeder: CAIN CATTLE CO.
 DOB: 3/5/2012 BBUNo. C1021494
 Sex: M
 Color: RED
 Horn: Polled



CJ'S SOUL MAN 168 RH C867835
 CLARK JONES FARMS U 1/2 2/04 DNA US3000427 BT 7670A

C J'S MOTOWN 412 LE C901889
 LAZY SUZAN RANCH U 1/3 5/06 DNA US3000443 BT 8804A

LAURIE BABY 14/2 LE C851607
 ADAIR U 7/03 DNA 1142A BT 7371D

PUFF DADDY 524 RH C917086
 CLARK JONES DNA US3000522 PV BT BBU380

766 766 BE C958443
 CAIN

2-32 LH C876596
 CASEY

INDIVIDUAL PERFORMANCE RECORDS

	BW	WW	YW	SCROTAL	REA	%IMF	RIB FAT	RUMP FAT
RATIO	104	100	100		100	114	96	75
ADJ TRAIT	80	690	1155		15.01	3.1	0.24	0.23

EXPECTED PROGENY DIFFERENCES

	BW	WW	YW	MILK	TM	SC	REA	%IMF	RIB FAT	RUMP FAT
EPD	-2.4	21	35	2	13	1				
ACC	0.52	0.48	0.42	0.17	-	0.29				

ULTRASOUND EPDs

	REA	%IMF	RIB FAT	RUMP FAT
EPD				
ACC				

7

138Z

Bulls

Breeder: CAIN CATTLE CO.
 DOB: 3/18/2012 BBUNo. C1020852
 Sex: M
 Color: RED MOT U/L
 Horn: Horns



** L2 CAPTAIN SUGAR 12/02 LR C857153
 L TWO RANCH U 1/2 2/04 DNA 134A BT 7526A

CF DREAM CATCHER 914 LE C977250
 COTTAGE FARM DNA US3000924 PV

** OASIS 655 LE C828198
 COTTAGE FARM U 1/2 2/04 DNA 251620A BT 7628A

REACTION OF 956 729 253 BE C877311
 CAIN BT 7921A

5138 LE C907105
 CAIN

5-42 LH C678665
 CASEY

INDIVIDUAL PERFORMANCE RECORDS

	BW	WW	YW	SCROTAL	REA	%IMF	RIB FAT	RUMP FAT
RATIO	101	110	102		106	84	88	92
ADJ TRAIT	83	758	1173		15.93	2.29	0.22	0.28

EXPECTED PROGENY DIFFERENCES

	BW	WW	YW	MILK	TM	SC	REA	%IMF	RIB FAT	RUMP FAT
EPD	1.3	24	36	6	18	0.6	0.09	-0.2	-0.08	-0.16
ACC	0.5	0.47	0.41	0.15	-	0.24	PE	PE	PE	PE

ULTRASOUND EPDs

	REA	%IMF	RIB FAT	RUMP FAT
EPD				
ACC				

6

637Z

Bulls

Breeder: CAIN CATTLE CO.
 DOB: 3/11/2012 BBUNo. C1012562
 Sex: M
 Color: RED PAINT
 Horn: Scurs



** L2 CAPTAIN SUGAR 12/02 LR C857153
 L TWO RANCH U 1/2 2/04 DNA 134A BT 7526A

CF DREAM CATCHER 914 LE C977250
 COTTAGE FARM DNA US3000924 PV

** OASIS 655 LE C828198
 COTTAGE FARM U 1/2 2/04 DNA 251620A BT 7628A

CATALYST 729 729 LT C775905
 CAIN U 1/00 BT 7216A

637 637 BE C931315
 CAIN

460 LE C896889
 CAIN

INDIVIDUAL PERFORMANCE RECORDS

	BW	WW	YW	SCROTAL	REA	%IMF	RIB FAT	RUMP FAT
RATIO	95	118	110		103	81	84	105
ADJ TRAIT	87	811	1261		15.44	2.2	0.21	0.32

EXPECTED PROGENY DIFFERENCES

	BW	WW	YW	MILK	TM	SC	REA	%IMF	RIB FAT	RUMP FAT
EPD	1.7	30	47	8	22	0.7	0.09	-0.1	-0.08	-0.1
ACC	0.51	0.47	0.41	0.15	-	0.24	PE	PE	PE	PE

ULTRASOUND EPDs

	REA	%IMF	RIB FAT	RUMP FAT
EPD				
ACC				

8

611Z

Bulls

Breeder: CAIN CATTLE CO.
 DOB: 3/10/2012 BBUNo. C1012520
 Sex: M
 Color: RED
 Horn: Polled



CATALYST 729 729 LT C775905
 CAIN U 1/00 BT 7216A

CAINS CATALYST 305W6 305W6 LH C985607
 CAIN

30/5 LH C916178
 WILMOTH & SONS DNA 343882A PV BT BBU344

4-35 LH C902794
 CASEY U 4/06 DNA US3000538 BT 9004A

CAINS MS 4-35CSY 611X 611X LH C998741
 CAIN

6-11 LH C934853
 CASEY

INDIVIDUAL PERFORMANCE RECORDS

	BW	WW	YW	SCROTAL	REA	%IMF	RIB FAT	RUMP FAT
RATIO	106	101	90		110	121	76	85
ADJ TRAIT	72	693	1033		16.41	3.3	0.19	0.26

EXPECTED PROGENY DIFFERENCES

	BW	WW	YW	MILK	TM	SC	REA	%IMF	RIB FAT	RUMP FAT
EPD	-2.7	0	2	8	8	0.1				
ACC	0.45	0.42	0.36	0.1	-	0.23				

ULTRASOUND EPDs

	REA	%IMF	RIB FAT	RUMP FAT
EPD				
ACC				

9

635Z

Bulls

Breeder: CAIN CATTLE CO.
 DOB: 3/20/2012 BBUNo. C1012522
 Sex: M
 Color: RED
 Horn: Horns

CATALYST 729 729 LT C775905
 CAIN U 1/00 BT 7216A

CAINS CATALYST 305W6 305W6 LH C985607
 CAIN

30/5 LH C916178
 WILMOTH & SONS DNA 343882A PV BT BBU344

4-35 LH C902794
 CASEY U 4/06 DNA US3000538 BT 9004A

CAINS MS 4-35CSY 635X 635X LH C998743
 CAIN

6-35 LH C934831
 CASEY

INDIVIDUAL PERFORMANCE RECORDS

	BW	WW	YW	SCROTAL	REA	%IMF	RIB FAT	RUMP FAT
RATIO	109	105	97		95	117	111	128
ADJ TRAIT	70	724	1110		14.19	3.19	0.28	0.39

EXPECTED PROGENY DIFFERENCES

	BW	WW	YW	MILK	TM	SC	REA	%IMF	RIB FAT	RUMP FAT
EPD	-2.3	2	8	8	8	0				
ACC	0.45	0.42	0.36	0.1	-	0.23				

ULTRASOUND EPDs

	BW	WW	YW	MILK	TM	SC	REA	%IMF	RIB FAT	RUMP FAT
EPD	1.1	20	29	1	10	0.6	0.09	0	-0.06	-0.05
ACC	0.52	0.48	0.42	0.15	-	0.26	PE	PE	PE	PE

11

903Z

Bulls

Breeder: CAIN CATTLE CO.
 DOB: 3/22/2012 BBUNo. C1012574
 Sex: M
 Color: RED
 Horn: Scurs

** L2 CAPTAIN SUGAR 12/02 LR C857153
 L TWO RANCH U 1/2 2/04 DNA 134A BT 7526A

CF DREAM CATCHER 914 LE C977250
 COTTAGE FARM DNA US3000924 PV

** OASIS 655 LE C828198
 COTTAGE FARM U 1/2 2/04 DNA 251620A BT 7628A

BLACK BAYOU 1071/3 LE C892444
 CHANNAROCK FARM U 1/2 5/06 DNA US3000542 BT 8891A

CCC MISS BLK BAYOU 8903 8903 LH C985555
 CAIN DNA 555352A PV

9-70 LH C814276
 CASEY DNA 492777A

INDIVIDUAL PERFORMANCE RECORDS

	BW	WW	YW	SCROTAL	REA	%IMF	RIB FAT	RUMP FAT
RATIO	91	104	101		95	117	155	115
ADJ TRAIT	91	716	1158		14.3	3.19	0.39	0.35

EXPECTED PROGENY DIFFERENCES

	BW	WW	YW	MILK	TM	SC	REA	%IMF	RIB FAT	RUMP FAT
EPD	1.7	20	28	3	13	0.5	0.12	0.1	0.02	0.02
ACC	0.5	0.47	0.41	0.15	-	0.24	PE	PE	PE	PE

ULTRASOUND EPDs

	BW	WW	YW	MILK	TM	SC	REA	%IMF	RIB FAT	RUMP FAT
EPD	2.8	21	35	1	12	0.5	0.07	0.1	-0.04	-0.08
ACC	0.52	0.5	0.44	0.19	-	0.28	PE	PE	PE	PE

10

69Z

Bulls

Breeder: CAIN CATTLE CO.
 DOB: 3/21/2012 BBUNo. C1012548
 Sex: M
 Color: RED WHT U/L
 Horn: Scurs

** L2 CAPTAIN SUGAR 12/02 LR C857153
 L TWO RANCH U 1/2 2/04 DNA 134A BT 7526A

CF DREAM CATCHER 914 LE C977250
 COTTAGE FARM DNA US3000924 PV

** OASIS 655 LE C828198
 COTTAGE FARM U 1/2 2/04 DNA 251620A BT 7628A

BULLET PROOF 864 LE C931489
 COTTAGE FARM U 4/08 DNA US9000957935 PV

6/9 LH C986058
 SEEKER

MISS CHOCOLATE MINT 9/4 LH C914302
 SEEKER

INDIVIDUAL PERFORMANCE RECORDS

	BW	WW	YW	SCROTAL	REA	%IMF	RIB FAT	RUMP FAT
RATIO	108	100	98		91	88	123	108
ADJ TRAIT	77	688	1130		13.69	2.39	0.31	0.33

EXPECTED PROGENY DIFFERENCES

	BW	WW	YW	MILK	TM	SC	REA	%IMF	RIB FAT	RUMP FAT
EPD	1.1	20	29	1	10	0.6	0.09	0	-0.06	-0.05
ACC	0.52	0.48	0.42	0.15	-	0.26	PE	PE	PE	PE

ULTRASOUND EPDs

	BW	WW	YW	MILK	TM	SC	REA	%IMF	RIB FAT	RUMP FAT
EPD	1.1	20	29	1	10	0.6	0.09	0	-0.06	-0.05
ACC	0.52	0.48	0.42	0.15	-	0.26	PE	PE	PE	PE

12

15Z

Bulls

Breeder: CAIN CATTLE CO.
 DOB: 4/5/2012 BBUNo. C1019372
 Sex: M
 Color: RED WHT U/L
 Horn: Scurs

** L2 CAPTAIN SUGAR 12/02 LR C857153
 L TWO RANCH U 1/2 2/04 DNA 134A BT 7526A

CF DREAM CATCHER 914 LE C977250
 COTTAGE FARM DNA US3000924 PV

** OASIS 655 LE C828198
 COTTAGE FARM U 1/2 2/04 DNA 251620A BT 7628A

CJ'S SOUL MAN 168 RH C867835
 CLARK JONES FARMS U 1/2 2/04 DNA US3000427 BT 7670A

1/5 LH C926189
 ADAIR DNA 582736A

ESPECIALY MAID 40/6 LH C710741
 MATHESON BT 6687A

INDIVIDUAL PERFORMANCE RECORDS

	BW	WW	YW	SCROTAL	REA	%IMF	RIB FAT	RUMP FAT
RATIO	93	107	103		99	80	68	92
ADJ TRAIT	89	738	1179		14.84	2.19	0.17	0.28

EXPECTED PROGENY DIFFERENCES

	BW	WW	YW	MILK	TM	SC	REA	%IMF	RIB FAT	RUMP FAT
EPD	2.8	21	35	1	12	0.5	0.07	0.1	-0.04	-0.08
ACC	0.52	0.5	0.44	0.19	-	0.28	PE	PE	PE	PE

ULTRASOUND EPDs

	BW	WW	YW	MILK	TM	SC	REA	%IMF	RIB FAT	RUMP FAT
EPD	2.8	21	35	1	12	0.5	0.07	0.1	-0.04	-0.08
ACC	0.52	0.5	0.44	0.19	-	0.28	PE	PE	PE	PE

13 1629/4 3N1

Breeder: OCKER CATTLE COMPANY
 DOB: 12/29/2004 BBUNo. C908208
 Sex: F PV: PV
 Color: BLK STAR FACE M/ UL
 Horn: Polled
 DNA: 339631A BT: BBU330
 AI: 11/15/2012 914 Dreamcatcher
 EXP: 914 Dreamcatcher C977250 12/2/2012 To 1/12/2013
 EXP: CF501 C1008372 1/12/2013 To 3/25/2013

CALFINFORMATION
 Type: AI Horned
 ID: 294Z
 BBU: C1024697
 Sex: M
 DOB: 10/13/2012
 Color: RED

**** L2 CAPTAIN SUGAR 12/02 LR C857153**
 L TWO RANCH U 1/2 2/04 DNA 134A BT 7526A

CF DREAM CATCHER 914 LE C977250
 COTTAGE FARM DNA US3000924 PV

**** OASIS 655 LE C828198**
 COTTAGE FARM U 1/2 2/04 DNA 251620A BT 7628A

PEDIGREE OF CALF

**** BLACK JACK 21 LE C817059**
 SCHELL RANCH U 1/2 4/02 DNA 40A BT 7093A

1629/4 LH C908208
 OCKER CATTLE COMPANY DNA 339631A BT BBU330

207 LH C830160
 OCKER CATTLE COMPANY BT 7287B

INDIVIDUAL PERFORMANCE RECORDS								
	BW	WW	YW	SCROTAL	REA	%IMF	RIB FAT	RUMP FAT
RATIO								
ADJ TRAIT								

EXPECTED PROGENY DIFFERENCES					ULTRASOUND EPDs					
	BW	WW	YW	MILK	TM	SC	REA	%IMF	RIB FAT	RUMP FAT
EPD	1.5	10	16	3	8	0.1	0.12	0	-0.01	0.03
ACC	0.36	0.38	0.36	0.29	-	0.29	0.29	0.29	0.28	0.29

15 516 3N1

Breeder: CLARK JONES FARMS
 DOB: 2/8/2005 BBUNo. C917093
 Sex: F PV: SV (DNA)
 Color: BLACK
 Horn: Classified: U
 DNA: 492776A
 AI: 11/15/2012 914 Dreamcatcher
 EXP: 914 Dreamcatcher C977250 12/2/2012 To 1/12/2013
 EXP: CF501 C1008372 1/12/2013 To 3/25/2013

CALFINFORMATION
 Type: AI Polled
 ID: 516Z
 BBU: C1024656
 Sex: F
 DOB: 10/13/2012
 Color: RED

**** L2 CAPTAIN SUGAR 12/02 LR C857153**
 L TWO RANCH U 1/2 2/04 DNA 134A BT 7526A

CF DREAM CATCHER 914 LE C977250
 COTTAGE FARM DNA US3000924 PV

**** OASIS 655 LE C828198**
 COTTAGE FARM U 1/2 2/04 DNA 251620A BT 7628A

PEDIGREE OF CALF

CJ'S SOUL MAN 168 RH C867835
 CLARK JONES FARMS U 1/2 2/04 DNA US3000427 BT 7670A

MISS C J 516 516 RH C917093
 CLARK JONES FARMS U 5/06 DNA 492776A

MISS CJ 250 250 LE C876309
 CLARK JONES FARMS U 1/1 5/06

INDIVIDUAL PERFORMANCE RECORDS								
	BW	WW	YW	SCROTAL	REA	%IMF	RIB FAT	RUMP FAT
RATIO	103	98	107		100	88	83	91
ADJ TRAIT	66	584	856		10.65	4.52	0.29	0.51

EXPECTED PROGENY DIFFERENCES					ULTRASOUND EPDs					
	BW	WW	YW	MILK	TM	SC	REA	%IMF	RIB FAT	RUMP FAT
EPD	-0.5	-5	3	1	-2	-0.1	0.05	0.3	0.07	0.07
ACC	0.51	0.47	0.45	0.36	-	0.33	0.33	0.33	0.31	0.31

14 557 3N1

Breeder: CAIN CATTLE CO.
 DOB: 2/1/2005 BBUNo. C907138
 Sex: F
 Color: RED
 Horn:
 AI: 11/15/2012 914 Dreamcatcher
 EXP: 914 Dreamcatcher C977250 12/2/2012 To 1/12/2013
 EXP: CF501 C1008372 1/12/2013 To 3/25/2013

CALFINFORMATION
 Type: AI Horned
 ID: 557Z
 BBU: C1024655
 Sex: F
 DOB: 9/22/2012
 Color: RED WHT UL

**** L2 CAPTAIN SUGAR 12/02 LR C857153**
 L TWO RANCH U 1/2 2/04 DNA 134A BT 7526A

CF DREAM CATCHER 914 LE C977250
 COTTAGE FARM DNA US3000924 PV

**** OASIS 655 LE C828198**
 COTTAGE FARM U 1/2 2/04 DNA 251620A BT 7628A

PEDIGREE OF CALF

CATALYST 729 729 LT C775905
 CAIN U 1/00 BT 7216A

557 LE C907138
 CAIN

9-62 LH C814268
 CASEY

INDIVIDUAL PERFORMANCE RECORDS								
	BW	WW	YW	SCROTAL	REA	%IMF	RIB FAT	RUMP FAT
RATIO	110	97	97		108	103	136	111
ADJ TRAIT	62	535	792		11.89	3.55	0.35	0.46

EXPECTED PROGENY DIFFERENCES					ULTRASOUND EPDs					
	BW	WW	YW	MILK	TM	SC	REA	%IMF	RIB FAT	RUMP FAT
EPD	-0.3	5	10	8	11	-0.1	0.03	0.1	0.07	0.04
ACC	0.56	0.55	0.55	0.36	-	0.33	0.45	0.48	0.45	0.48

16 531 3N1

Breeder: CLARK JONES
 DOB: 4/1/2005 BBUNo. C917054
 Sex: F PV: SV (DNA)
 Color: RED
 Horn: Polled Classified: U
 DNA: 343877A BT: BBU350
 AI: 11/15/2012 914 Dreamcatcher
 EXP: 914 Dreamcatcher C977250 12/2/2012 To 1/12/2013
 EXP: CF501 C1008372 1/12/2013 To 3/25/2013

CALFINFORMATION
 Type: AI Polled
 ID: 531Z
 BBU: C1024658
 Sex: F
 DOB: 8/30/2012
 Color: RED

**** L2 CAPTAIN SUGAR 12/02 LR C857153**
 L TWO RANCH U 1/2 2/04 DNA 134A BT 7526A

CF DREAM CATCHER 914 LE C977250
 COTTAGE FARM DNA US3000924 PV

**** OASIS 655 LE C828198**
 COTTAGE FARM U 1/2 2/04 DNA 251620A BT 7628A

PEDIGREE OF CALF

CJ'S SOUL MAN 168 RH C867835
 CLARK JONES FARMS U 1/2 2/04 DNA US3000427 BT 7670A

MISS CJ 531 531 RH C917054
 CLARK JONES U 5/06 DNA 343877A BT BBU350

FANCY TIGER 7-058 LH C744684
 DUNKIN FARMS U 1/2 5/06 BT 6439C

INDIVIDUAL PERFORMANCE RECORDS								
	BW	WW	YW	SCROTAL	REA	%IMF	RIB FAT	RUMP FAT
RATIO	100	100	100		100	100	100	100
ADJ TRAIT	64	568	943		9.66	4.34	0.44	0.71

EXPECTED PROGENY DIFFERENCES					ULTRASOUND EPDs					
	BW	WW	YW	MILK	TM	SC	REA	%IMF	RIB FAT	RUMP FAT
EPD	0.4	10	16	0	5	0.2	0.06	0.1	-0.02	0.03
ACC	0.52	0.42	0.42	0.34	-	0.33	0.33	0.33	0.31	0.31

17 525 3N1
 Breeder: LAZY SUZAN RANCH
 DOB: 4/26/2005 BBUNo. C917574
 Sex: F PV:
 Color: RED
 Horn: Classified: U
 DNA: 343876A BT: BBU349
 Al: 11/15/2012 914 Dreamcatcher
 EXP: 914 Dreamcatcher C977250 12/2/2012 To 1/12/2013
 EXP: CF501 C1008372 1/12/2013 To 3/25/2013

CALFINFORMATION
 Type: AI Horned
 ID: 525Z4
 BBU: C1024659
 Sex: M
 DOB: 8/30/2012
 Color: RED

**** L2 CAPTAIN SUGAR 12/02 LR C857153**
L TWO RANCH U 1/2 2/04 DNA 134A BT 7526A
CF DREAM CATCHER 914 LE C977250
COTTAGE FARM DNA US3000924 PV
**** OASIS 655 LE C828198**
COTTAGE FARM U 1/2 2/04 DNA 251620A BT 7628A
PEDIGREE OF CALF
CJ'S SOUL MAN 168 RH C867835
CLARK JONES FARMS U 1/2 2/04 DNA US3000427 BT 7670A
525 LE C917574
LAZY SUZAN RANCH U 5/06 DNA 343876A PV BT BBU349
Laurie Baby 14/2 LE C851607
ADAIR U 7/03 DNA 1142A BT 7371D

INDIVIDUAL PERFORMANCE RECORDS								
	BW	WW	YW	SCROTAL	REA	%IMF	RIB FAT	RUMP FAT
RATIO		100						
ADJ TRAIT		606						

EXPECTED PROGENY DIFFERENCES					ULTRASOUND EPDs					
	BW	WW	YW	MILK	TM	SC	REA	%IMF	RIB FAT	RUMP FAT
EPD	-0.6	6	14	2	5	0.2	0.04	0.1	-0.01	-0.11
ACC	0.51	0.5	0.47	0.36	-	0.41	0.38	0.39	0.38	0.38

19 110/6 3N1
 Breeder: K & L FARMS
 DOB: 1/10/2006 BBUNo. C929953
 Sex: F
 Color: BLACK WHT U/L
 Horn: Classified: U
 Al: 11/15/2012 914 Dreamcatcher
 EXP: 914 Dreamcatcher C977250 12/2/2012 To 1/12/2013
 EXP: CF501 C1008372 1/12/2013 To 3/25/2013

CALFINFORMATION
 Type: NS Scurred
 ID: 106Z
 BBU: C1024685
 Sex: M
 DOB: 9/21/2012
 Color: RED PAINT

**** L2 CAPTAIN SUGAR 12/02 LR C857153**
L TWO RANCH U 1/2 2/04 DNA 134A BT 7526A
CF DREAM CATCHER 914 LE C977250
COTTAGE FARM DNA US3000924 PV
**** OASIS 655 LE C828198**
COTTAGE FARM U 1/2 2/04 DNA 251620A BT 7628A
PEDIGREE OF CALF
CJ'S SOUL MAN 168 RH C867835
CLARK JONES FARMS U 1/2 2/04 DNA US3000427 BT 7670A
110/6 LE C929953
K & L FARMS U 4/07
GATOR 205 205 LE C867778
GATOR FARMS U 1/2 3/09

INDIVIDUAL PERFORMANCE RECORDS								
	BW	WW	YW	SCROTAL	REA	%IMF	RIB FAT	RUMP FAT
RATIO								
ADJ TRAIT								

EXPECTED PROGENY DIFFERENCES					ULTRASOUND EPDs					
	BW	WW	YW	MILK	TM	SC	REA	%IMF	RIB FAT	RUMP FAT
EPD	0.4	-2	3	-5	-6	-0.2	-0.01	0.2	0.04	0.06
ACC	0.39	0.38	0.36	0.29	-	0.28	0.29	0.29	0.26	0.26

18 544 3N1
 Breeder: LAZY SUZAN RANCH
 DOB: 5/2/2005 BBUNo. C917576
 Sex: F
 Color: BLACK
 Horn: Classified: U
 Al: 11/15/2012 914 Dreamcatcher
 EXP: 914 Dreamcatcher C977250 12/2/2012 To 1/12/2013
 EXP: CF501 C1008372 1/12/2013 To 3/25/2013

CALFINFORMATION
 Type: AI Polled
 ID: 544Z
 BBU: C1024660
 Sex: M
 DOB: 10/10/2012
 Color: BLACK

**** L2 CAPTAIN SUGAR 12/02 LR C857153**
L TWO RANCH U 1/2 2/04 DNA 134A BT 7526A
CF DREAM CATCHER 914 LE C977250
COTTAGE FARM DNA US3000924 PV
**** OASIS 655 LE C828198**
COTTAGE FARM U 1/2 2/04 DNA 251620A BT 7628A
PEDIGREE OF CALF
CJ'S SOUL MAN 168 RH C867835
CLARK JONES FARMS U 1/2 2/04 DNA US3000427 BT 7670A
544 LE C917576
LAZY SUZAN RANCH U 5/06
Laurie Baby 14/2 LE C851607
ADAIR U 7/03 DNA 1142A BT 7371D

INDIVIDUAL PERFORMANCE RECORDS								
	BW	WW	YW	SCROTAL	REA	%IMF	RIB FAT	RUMP FAT
RATIO		100						
ADJ TRAIT		589						

EXPECTED PROGENY DIFFERENCES					ULTRASOUND EPDs					
	BW	WW	YW	MILK	TM	SC	REA	%IMF	RIB FAT	RUMP FAT
EPD	-0.6	12	25	1	7	0.5	0.27	0.1	0.03	-0.08
ACC	0.5	0.48	0.48	0.39	-	0.39	0.39	0.41	0.38	0.38

20 657 3N1
 Breeder: CAIN CATTLE CO.
 DOB: 2/24/2006 BBUNo. C941383
 Sex: F
 Color: RED
 Horn: Classified: U
 Al: 11/15/2012 914 Dreamcatcher
 EXP: 914 Dreamcatcher C977250 12/2/2012 To 1/12/2013
 EXP: CF501 C1008372 1/12/2013 To 3/25/2013

CALFINFORMATION
 Type: AI Horned
 ID: 657Z
 BBU: C1024661
 Sex: M
 DOB: 8/24/2012
 Color: RED

**** L2 CAPTAIN SUGAR 12/02 LR C857153**
L TWO RANCH U 1/2 2/04 DNA 134A BT 7526A
CF DREAM CATCHER 914 LE C977250
COTTAGE FARM DNA US3000924 PV
**** OASIS 655 LE C828198**
COTTAGE FARM U 1/2 2/04 DNA 251620A BT 7628A
PEDIGREE OF CALF
MC MOOSE 0088 LH C829056
JOERIS BT 7298A
657 657 BE C941383
CAIN
3-39 LH C668100
CASEY

INDIVIDUAL PERFORMANCE RECORDS								
	BW	WW	YW	SCROTAL	REA	%IMF	RIB FAT	RUMP FAT
RATIO	91				77	88	55	67
ADJ TRAIT	73				7.21	2.94	0.14	0.27

EXPECTED PROGENY DIFFERENCES					ULTRASOUND EPDs					
	BW	WW	YW	MILK	TM	SC	REA	%IMF	RIB FAT	RUMP FAT
EPD	-0.2	-3	-8	3	2	0	-0.36	-0.1	-0.09	-0.04
ACC	0.52	0.5	0.5	0.28	-	0.24	0.36	0.41	0.39	0.42

21

7139

3N1

Breeder: CAIN CATTLE CO.
 DOB: 2/28/2007 BBUNo. C945883
 Sex: F
 Color: BROWN
 Horn:

CALFINFORMATION
 Type: AI Horned
 ID: 139Z2
 BBU: C1024664
 Sex: M
 DOB: 9/14/2012
 Color: BLACK PAINT

AI: 11/15/2012 914 Dreamcatcher
 EXP: 914 Dreamcatcher C977250 12/2/2012 To 1/12/2013
 EXP: CF501 C1008372 1/12/2013 To 3/25/2013

**** L2 CAPTAIN SUGAR 12/02 LR C857153**
 L TWO RANCH U 1/2 2/04 DNA 134A BT 7526A

CF DREAM CATCHER 914 LE C977250
 COTTAGE FARM DNA US3000924 PV

**** OASIS 655 LE C828198**
 COTTAGE FARM U 1/2 2/04 DNA 251620A BT 7628A

PEDIGREE OF CALF

CJ'S SOUL MAN 168 RH C867835
 CLARK JONES FARMS U 1/2 2/04 DNA US3000427 BT 7670A

7139 LH C945883

CAIN

329 BE C889034
 CAIN DNA 1115A BT 9413A

INDIVIDUAL PERFORMANCE RECORDS

	BW	WW	YW	SCROTAL	REA	%IMF	RIB FAT	RUMP FAT
RATIO	111	99	97		109	109	121	106
ADJ TRAIT	56	552	807		11.62	5.33	0.54	0.61

EXPECTED PROGENY DIFFERENCES

	BW	WW	YW	MILK	TM	SC	REA	%IMF	RIB FAT	RUMP FAT
EPD	-0.8	5	10	5	7	0	0.06	0.4	0.17	0.13
ACC	0.54	0.51	0.51	0.33	-	0.34	0.45	0.48	0.48	0.48

ULTRASOUND EPDs

**22**

765

3N1

Breeder: T V R
 DOB: 3/23/2007 BBUNo. C940758
 Sex: F
 Color: BLACK BRINDLE
 Horn:

CALFINFORMATION
 Type: AI Polled
 ID: 765Z
 BBU: C1024689
 Sex: F
 DOB: 10/8/2012
 Color: RED

AI: 11/15/2012 914 Dreamcatcher
 EXP: 914 Dreamcatcher C977250 12/2/2012 To 1/12/2013
 EXP: CF501 C1008372 1/12/2013 To 3/25/2013

**** L2 CAPTAIN SUGAR 12/02 LR C857153**
 L TWO RANCH U 1/2 2/04 DNA 134A BT 7526A

CF DREAM CATCHER 914 LE C977250
 COTTAGE FARM DNA US3000924 PV

**** OASIS 655 LE C828198**
 COTTAGE FARM U 1/2 2/04 DNA 251620A BT 7628A

PEDIGREE OF CALF

CJ'S SOUL MAN 168 RH C867835
 CLARK JONES FARMS U 1/2 2/04 DNA US3000427 BT 7670A

765 LE C940758

T V R

224 LE C813245
 COTTAGE FARM U 10/00 DNA 351A PV BT 8427A

INDIVIDUAL PERFORMANCE RECORDS

	BW	WW	YW	SCROTAL	REA	%IMF	RIB FAT	RUMP FAT
RATIO								
ADJ TRAIT								

EXPECTED PROGENY DIFFERENCES

	BW	WW	YW	MILK	TM	SC	REA	%IMF	RIB FAT	RUMP FAT
EPD	-0.2	3	9	0	1	0.1	-0.08	0.2	0.03	-0.01
ACC	PE	PE	PE	PE	PE	PE	PE	PE	PE	PE

ULTRASOUND EPDs

23

7279

3N1

Breeder: CAIN CATTLE CO.
 DOB: 8/14/2007 BBUNo. C952482
 Sex: F
 Color: BLACK
 Horn:

CALFINFORMATION
 Type: AI Polled
 ID: 279Z
 BBU: C1024666
 Sex: F
 DOB: 8/27/2012
 Color: BLACK

AI: 11/15/2012 914 Dreamcatcher
 EXP: 914 Dreamcatcher C977250 12/2/2012 To 1/12/2013
 EXP: CF501 C1008372 1/12/2013 To 3/25/2013

**** L2 CAPTAIN SUGAR 12/02 LR C857153**
 L TWO RANCH U 1/2 2/04 DNA 134A BT 7526A

CF DREAM CATCHER 914 LE C977250
 COTTAGE FARM DNA US3000924 PV

**** OASIS 655 LE C828198**
 COTTAGE FARM U 1/2 2/04 DNA 251620A BT 7628A

PEDIGREE OF CALF

PUFF DADDY 524 RH C917086
 CLARK JONES DNA US3000522 PV BT BBU380

7279 LH C952482

CAIN

MISS CJ 513 513 RH C917055
 CLARK JONES U 5/06 DNA 343874A PV BT BBU347

INDIVIDUAL PERFORMANCE RECORDS

	BW	WW	YW	SCROTAL	REA	%IMF	RIB FAT	RUMP FAT
RATIO	97				114	97	113	114
ADJ TRAIT	73				9.98	3.44	0.29	0.45

EXPECTED PROGENY DIFFERENCES

	BW	WW	YW	MILK	TM	SC	REA	%IMF	RIB FAT	RUMP FAT
EPD	1	15	30	3	10	0.3	0.6	0.2	0.12	0.09
ACC	0.58	0.5	0.54	0.29	-	0.33	0.48	0.52	0.51	0.52

ULTRASOUND EPDs

24 8811 3N1
 8811
 Breeder: CAIN CATTLE CO.
 DOB: 10/4/2007 BBUNo. C966414
 Sex: F
 Color: RED
 Horn:
 Al: 11/15/2012 914 Dreamcatcher
 EXP: 914 Dreamcatcher C977250 12/2/2012 To 1/12/2013
 EXP: CF501 C1008372 1/12/2013 To 3/25/2013

CALFINFORMATION
 Type: AI Horned
 ID: 811Z
 BBU: C1024667
 Sex: M
 DOB: 9/6/2012
 Color: RED

**** L2 CAPTAIN SUGAR 12/02 LR C857153**
L TWO RANCH U 1/2 2/04 DNA 134A BT 7526A

CF DREAM CATCHER 914 LE C977250
COTTAGE FARM DNA US3000924 PV

**** OASIS 655 LE C828198**
COTTAGE FARM U 1/2 2/04 DNA 251620A BT 7628A

PEDIGREE OF CALF

PUFF DADDY 524 RH C917086
CLARK JONES DNA US3000522 PV BT BBU380

8811 8811 C966414
 CAIN

*** TIGER BABY 684 LE C725195**
HARROD FARMS U 1/2 6/98 DNA 1152A BT 6219B

INDIVIDUAL PERFORMANCE RECORDS								
	BW	WW	YW	SCROTAL	REA	%IMF	RIB FAT	RUMP FAT
RATIO	109	100	100		100	100	100	100
ADJ TRAIT	60	465	793		8.4	3.46	0.16	0.17

EXPECTED PROGENY DIFFERENCES							ULTRASOUND EPDs			
	BW	WW	YW	MILK	TM	SC	REA	%IMF	RIB FAT	RUMP FAT
EPD	1.2	18	25	5	14	0.5	0.49	-0.1	0	-0.23
ACC	0.56	0.47	0.45	0.33	-	0.31	0.36	0.38	0.36	0.38

25 8856 3N1
 8856
 Breeder: CAIN CATTLE CO.
 DOB: 12/19/2007 BBUNo. C968608
 Sex: F
 Color: RED
 Horn:
 Al: 11/15/2012 914 Dreamcatcher
 EXP: 914 Dreamcatcher C977250 12/2/2012 To 1/12/2013
 EXP: CF501 C1008372 1/12/2013 To 3/25/2013

CALFINFORMATION
 Type: AI Scurred
 ID: 856Z
 BBU: C1024668
 Sex: M
 DOB: 8/26/2012
 Color: RED MOT UL

**** L2 CAPTAIN SUGAR 12/02 LR C857153**
L TWO RANCH U 1/2 2/04 DNA 134A BT 7526A

CF DREAM CATCHER 914 LE C977250
COTTAGE FARM DNA US3000924 PV

**** OASIS 655 LE C828198**
COTTAGE FARM U 1/2 2/04 DNA 251620A BT 7628A

PEDIGREE OF CALF

8-76 LH C788040
CASEY U 9/08 DNA 282A BT 8323A

8856 8856 C968608
 CAIN

BJR 145/5 145/5 LH C715161
BJR SUMMERFORD DNA 1154A BT 9450A

INDIVIDUAL PERFORMANCE RECORDS								
	BW	WW	YW	SCROTAL	REA	%IMF	RIB FAT	RUMP FAT
RATIO	100	100	100		100	100	100	100
ADJ TRAIT	76	525	830		9.31	3.13	0.2	0.34

EXPECTED PROGENY DIFFERENCES							ULTRASOUND EPDs			
	BW	WW	YW	MILK	TM	SC	REA	%IMF	RIB FAT	RUMP FAT
EPD	0.4	15	24	1	8	0.3	0.12	0.1	0.06	0.09
ACC	0.39	0.34	0.33	0.15	-	0.15	0.21	0.21	0.19	0.21

8811



Tiger Baby daughter selling with Cottage Farm 501 bull calf at side and bred back to CF501. Great producer with quality of Tiger Baby!

26 8866 3N1
 8866
 Breeder: CAIN CATTLE CO.
 DOB: 1/28/2008 BBUNo. C969536
 Sex: F
 Color: RED
 Horn:
 Al: 11/15/2012 914 Dreamcatcher
 EXP: 914 Dreamcatcher C977250 12/2/2012 To 1/12/2013
 EXP: CF501 C1008372 1/12/2013 To 3/25/2013

CALFINFORMATION
 Type: AI Horned
 ID: 866Z
 BBU: C1024669
 Sex: F
 DOB: 9/26/2012
 Color: RED

**** L2 CAPTAIN SUGAR 12/02 LR C857153**
L TWO RANCH U 1/2 2/04 DNA 134A BT 7526A

CF DREAM CATCHER 914 LE C977250
COTTAGE FARM DNA US3000924 PV

**** OASIS 655 LE C828198**
COTTAGE FARM U 1/2 2/04 DNA 251620A BT 7628A

PEDIGREE OF CALF

8-76 LH C788040
CASEY U 9/08 DNA 282A BT 8323A

8866 8866 LH C969536
 CAIN

*** TIGER BABY 684 LE C725195**
HARROD FARMS U 1/2 6/98 DNA 1152A BT 6219B

INDIVIDUAL PERFORMANCE RECORDS								
	BW	WW	YW	SCROTAL	REA	%IMF	RIB FAT	RUMP FAT
RATIO	101	100	100		100	100	100	100
ADJ TRAIT	69	533	793		10.67	3.56	0.19	0.23

EXPECTED PROGENY DIFFERENCES							ULTRASOUND EPDs			
	BW	WW	YW	MILK	TM	SC	REA	%IMF	RIB FAT	RUMP FAT
EPD	1.9	20	29	7	17	0.6	0.28	-0.1	0.01	-0.14
ACC	0.51	0.41	0.39	0.19	-	0.21	0.26	0.26	0.24	0.26

27 8078 3N1
 Breeder: CAIN CATTLE CO.
 DOB: 3/7/2008 BBUNo. C962467
 Sex: F
 Color: RED
 Horn:
 Al: 11/15/2012 914 Dreamcatcher
 EXP: 914 Dreamcatcher C977250 12/2/2012 To 1/12/2013
 EXP: CF501 C1008372 1/12/2013 To 3/25/2013

CALFINFORMATION
 Type: AI Horned
 ID: 078Z
 BBU: C1024670
 Sex: F
 DOB: 9/12/2012
 Color: RED WHT UL

**** L2 CAPTAIN SUGAR 12/02 LR C857153**
L TWO RANCH U 1/2 2/04 DNA 134A BT 7526A
CF DREAM CATCHER 914 LE C977250
COTTAGE FARM DNA US3000924 PV
**** OASIS 655 LE C828198**
COTTAGE FARM U 1/2 2/04 DNA 251620A BT 7628A
PEDIGREE OF CALF
NAVASOTA 2/0 LH C847621
VALLEY RANCH U 1/2 2/05 DNA 325A BT 8398A
8078 8078 LH C962467
CAIN
9-47 LH C814253
CASEY

INDIVIDUAL PERFORMANCE RECORDS								
	BW	WW	YW	SCROTAL	REA	%IMF	RIB FAT	RUMP FAT
RATIO	111	76	86		99	82	78	65
ADJ TRAIT	55	400	700		10.54	3.25	0.22	0.29

EXPECTED PROGENY DIFFERENCES							ULTRASOUND EPDs			
	BW	WW	YW	MILK	TM	SC	REA	%IMF	RIB FAT	RUMP FAT
EPD	-1.3	-5	-5	6	4	-0.2	0.01	-0.1	-0.05	-0.21
ACC	0.51	0.47	0.47	0.19	-	0.19	0.34	0.38	0.36	0.41

29 8951 3N1
 Breeder: CAIN CATTLE CO.
 DOB: 9/11/2008 BBUNo. C985567
 Sex: F
 Color: BLACK BRINDLE WHT U/L
 Horn: Polled
 Al: 11/15/2012 914 Dreamcatcher
 EXP: 914 Dreamcatcher C977250 12/2/2012 To 1/12/2013
 EXP: CF501 C1008372 1/12/2013 To 3/25/2013

CALFINFORMATION
 Type: AI Scurred
 ID: 951Z
 BBU: C1024672
 Sex: M
 DOB: 8/31/2012
 Color: RED WHT UL

**** L2 CAPTAIN SUGAR 12/02 LR C857153**
L TWO RANCH U 1/2 2/04 DNA 134A BT 7526A
CF DREAM CATCHER 914 LE C977250
COTTAGE FARM DNA US3000924 PV
**** OASIS 655 LE C828198**
COTTAGE FARM U 1/2 2/04 DNA 251620A BT 7628A
PEDIGREE OF CALF
BLACK BAYOU 1071/3 LE C892444
CHANNAROCK FARM U 1/2 5/06 DNA US3000542 BT 8891A
CCC MISS BLK BAYOU 8951 8951 LH C985567
CAIN
*** TIGER BABY 684 LE C725195**
HARROD FARMS U 1/2 6/98 DNA 1152A BT 6219B

INDIVIDUAL PERFORMANCE RECORDS								
	BW	WW	YW	SCROTAL	REA	%IMF	RIB FAT	RUMP FAT
RATIO	90	99	103		100	100	100	100
ADJ TRAIT	63	455	724		7.05	2.74	0.17	0.19

EXPECTED PROGENY DIFFERENCES							ULTRASOUND EPDs			
	BW	WW	YW	MILK	TM	SC	REA	%IMF	RIB FAT	RUMP FAT
EPD	2.6	20	26	5	15	0.5	0.34	-0.2	-0.08	-0.12
ACC	0.56	0.54	0.5	0.31	-	0.38	0.34	0.34	0.34	0.34

28 8900 3N1
 Breeder: CAIN CATTLE CO.
 DOB: 8/15/2008 BBUNo. C985554
 Sex: F
 Color: RED PAINT
 Horn: Polled
 DNA: 555351A
 Al: 11/15/2012 914 Dreamcatcher
 EXP: 914 Dreamcatcher C977250 12/2/2012 To 1/12/2013
 EXP: CF501 C1008372 1/12/2013 To 3/25/2013

CALFINFORMATION
 Type: AI Polled
 ID: 900Z
 BBU: C1024671
 Sex: M
 DOB: 8/24/2012
 Color: RED

**** L2 CAPTAIN SUGAR 12/02 LR C857153**
L TWO RANCH U 1/2 2/04 DNA 134A BT 7526A
CF DREAM CATCHER 914 LE C977250
COTTAGE FARM DNA US3000924 PV
**** OASIS 655 LE C828198**
COTTAGE FARM U 1/2 2/04 DNA 251620A BT 7628A
PEDIGREE OF CALF
BLACK BAYOU 1071/3 LE C892444
CHANNAROCK FARM U 1/2 5/06 DNA US3000542 BT 8891A
CCC MISS BLK BAYOU 890 8900 LH C985554
CAIN DNA 555351A PV
9-54 LH C814260
CASEY DNA 492775A

INDIVIDUAL PERFORMANCE RECORDS								
	BW	WW	YW	SCROTAL	REA	%IMF	RIB FAT	RUMP FAT
RATIO	97	99	98		94	42	95	120
ADJ TRAIT	59	457	687		9.04	1.11	0.25	0.47

EXPECTED PROGENY DIFFERENCES							ULTRASOUND EPDs			
	BW	WW	YW	MILK	TM	SC	REA	%IMF	RIB FAT	RUMP FAT
EPD	0.9	12	23	5	11	0.2	0.28	-0.1	0.03	0.14
ACC	0.55	0.52	0.52	0.29	-	0.29	0.44	0.47	0.45	0.48

30 8953 3N1
 Breeder: CAIN CATTLE CO.
 DOB: 9/15/2008 BBUNo. C985568
 Sex: F
 Color: BLACK
 Horn: Polled
 DNA: 555371A
 Al: 11/15/2012 914 Dreamcatcher
 EXP: 914 Dreamcatcher C977250 12/2/2012 To 1/12/2013
 EXP: CF501 C1008372 1/12/2013 To 3/25/2013

CALFINFORMATION
 Type: AI Scurred
 ID: 953Z
 BBU: C1024673
 Sex: F
 DOB: 9/16/2012
 Color: RED

**** L2 CAPTAIN SUGAR 12/02 LR C857153**
L TWO RANCH U 1/2 2/04 DNA 134A BT 7526A
CF DREAM CATCHER 914 LE C977250
COTTAGE FARM DNA US3000924 PV
**** OASIS 655 LE C828198**
COTTAGE FARM U 1/2 2/04 DNA 251620A BT 7628A
PEDIGREE OF CALF
BLACK BAYOU 1071/3 LE C892444
CHANNAROCK FARM U 1/2 5/06 DNA US3000542 BT 8891A
CCC MISS BLK BAYOU 8953 8953 LH C985568
CAIN DNA 555371A PV
*** TIGER BABY 684 LE C725195**
HARROD FARMS U 1/2 6/98 DNA 1152A BT 6219B

INDIVIDUAL PERFORMANCE RECORDS								
	BW	WW	YW	SCROTAL	REA	%IMF	RIB FAT	RUMP FAT
RATIO	97	102	102		113	76	87	79
ADJ TRAIT	59	472	720		10.93	1.99	0.23	0.31

EXPECTED PROGENY DIFFERENCES							ULTRASOUND EPDs			
	BW	WW	YW	MILK	TM	SC	REA	%IMF	RIB FAT	RUMP FAT
EPD	1.7	18	25	5	14	0.6	0.42	-0.3	-0.08	-0.17
ACC	0.59	0.56	0.55	0.34	-	0.39	0.48	0.51	0.5	0.52

31

848

MISS CJ 848

3N1

Breeder: CLARK JONES
 DOB: 9/18/2008 BBUNo. C976145
 Sex: F
 Color: RED
 Horn: Polled

CALFINFORMATION

Type: AI Polled
 ID: 848Z
 BBU: C1024674
 Sex: F
 DOB: 9/13/2012
 Color: RED WHT UL

AI: 11/15/2012 914 Dreamcatcher

EXP: 914 Dreamcatcher C977250 12/2/2012 To 1/12/2013

EXP: CF501 C1008372 1/12/2013 To 3/25/2013

**** L2 CAPTAIN SUGAR 12/02 LR C857153**

L TWO RANCH U 1/2 2/04 DNA 134A BT 7526A

CF DREAM CATCHER 914 LE C977250

COTTAGE FARM DNA US3000924 PV

**** OASIS 655 LE C828198**

COTTAGE FARM U 1/2 2/04 DNA 251620A BT 7628A

PEDIGREE OF CALF

C J'S MOTOWN 412 LE C901889

LAZY SUZAN RANCH U 1/3 5/06 DNA US3000443 BT 8804A

MISS CJ 848 848 LE C976145

CLARK JONES

LEIGH ANN'S MAGIC 4059 RE C919703

SOUTH OAKS U 3/07

INDIVIDUAL PERFORMANCE RECORDS

	BW	WW	YW	SCROTAL	REA	%IMF	RIB FAT	RUMP FAT
RATIO	106	113	103		110	105	118	130
ADJ TRAIT	57	555	835		11.01	3.68	0.53	0.74

EXPECTED PROGENY DIFFERENCES

ULTRASOUND EPDs

	BW	WW	YW	MILK	TM	SC	REA	%IMF	RIB FAT	RUMP FAT
EPD	-2.7	17	29	-3	6	0.7	0.11	0.1	0.03	0.1
ACC	0.51	0.5	0.48	0.23	-	0.31	0.41	0.42	0.39	0.44

FRENZEL 966



Sells as 3 n 1 with Dream Catcher bull calf at side and bred back same way.

MISS CJ 848



LeighAnn granddaughter! Great producer. Motown power and predictability with total package: individual performance, carcass and EPDs with conformation!

32

966

FRENZEL 966

3N1

Breeder: FRENZEL

DOB: 1/8/2009 BBUNo. C992276

Sex: F

Color: LIGHT RED

Horn: Horns

CALFINFORMATION

Type: AI Horned

ID: 966Z

BBU: C1024690

Sex: M

DOB: 8/21/2012

Color: RED

AI: 11/15/2012 914 Dreamcatcher

EXP: 914 Dreamcatcher C977250 12/2/2012 To 1/12/2013

EXP: CF501 C1008372 1/12/2013 To 3/25/2013

**** L2 CAPTAIN SUGAR 12/02 LR C857153**

L TWO RANCH U 1/2 2/04 DNA 134A BT 7526A

CF DREAM CATCHER 914 LE C977250

COTTAGE FARM DNA US3000924 PV

**** OASIS 655 LE C828198**

COTTAGE FARM U 1/2 2/04 DNA 251620A BT 7628A

PEDIGREE OF CALF

4248 RE C919125

LASATER U 4/07 DNA 998A BT 9312A

FRENZEL 966 966 LH C992276

FRENZEL

518 LH C920004

FRENZEL

INDIVIDUAL PERFORMANCE RECORDS

	BW	WW	YW	SCROTAL	REA	%IMF	RIB FAT	RUMP FAT
RATIO	106	104	109		104	118	96	134
ADJ TRAIT	72	625	797		11.84	3.22	0.17	0.39

EXPECTED PROGENY DIFFERENCES

ULTRASOUND EPDs

	BW	WW	YW	MILK	TM	SC	REA	%IMF	RIB FAT	RUMP FAT
EPD	0.3	27	37	5	19	0.9	0.38	0.1	0.03	0.09
ACC	0.51	0.48	0.48	0.23	-	0.31	0.41	0.44	0.42	0.45

33 3081W 3N1
CCC MISS CATALYST 3081W
 Breeder: CAIN CATTLE CO. CALFINFORMATION
 DOB: 2/9/2009 BBUNo. C985593 Type: AI Horned
 Sex: F ID: 081Z
 Color: RED BBU: C1024675
 Horn: Horns Sex: F
 DOB: 10/7/2012
 Color: RED

AI: 11/15/2012 914 Dreamcatcher
 EXP: 914 Dreamcatcher C977250 12/2/2012 To 1/12/2013
 EXP: CF501 C1008372 1/12/2013 To 3/25/2013

**** L2 CAPTAIN SUGAR 12/02 LR C857153**
L TWO RANCH U 1/2 2/04 DNA 134A BT 7526A
CF DREAM CATCHER 914 LE C977250
COTTAGE FARM DNA US3000924 PV
**** OASIS 655 LE C828198**
COTTAGE FARM U 1/2 2/04 DNA 251620A BT 7628A
PEDIGREE OF CALF
CATALYST 729 729 LT C775905
CAIN U 1/00 BT 7216A
CCC MISS CATALYST 3081W 3081W LH C985593
CAIN
3081 RH C885312
WINDY HILLS U 1/3 5/06 DNA 375538A BT BBU342

INDIVIDUAL PERFORMANCE RECORDS								
	BW	WW	YW	SCROTAL	REA	%IMF	RIB FAT	RUMP FAT
RATIO	115	96	103		101	96	94	
ADJ TRAIT	65	582	858		9.74	3.52	0.37	

EXPECTED PROGENY DIFFERENCES							ULTRASOUND EPDs				
	BW	WW	YW	MILK	TM	SC	REA	%IMF	RIB FAT	RUMP FAT	
EPD	0.1	7	19	6	9	0.1	-0.03	0	-0.02	0.02	
ACC	0.51	0.5	0.48	0.28	-	0.33	0.44	0.47	0.45	0.34	

35 572-9 3N1
Breeder: HILLTOP RANCH CALFINFORMATION
 DOB: 3/5/2009 BBUNo. C977797 Type: AI Polled
 Sex: F ID: 729Z
 Color: LIGHT RED BBU: C1024678
 Horn: Horns Classified: U Sex: M
 DOB: 9/28/2012
 Color: RED WHT UL

AI: 11/15/2012 914 Dreamcatcher
 EXP: 914 Dreamcatcher C977250 12/2/2012 To 1/12/2013
 EXP: CF501 C1008372 1/12/2013 To 3/25/2013

**** L2 CAPTAIN SUGAR 12/02 LR C857153**
L TWO RANCH U 1/2 2/04 DNA 134A BT 7526A
CF DREAM CATCHER 914 LE C977250
COTTAGE FARM DNA US3000924 PV
**** OASIS 655 LE C828198**
COTTAGE FARM U 1/2 2/04 DNA 251620A BT 7628A
PEDIGREE OF CALF
598 598 BE C916183
CAIN
572-9 LH C977797
HILLTOP RANCH U 3/10
636-4 LH C894696
HILLTOP RANCH U 3/05

INDIVIDUAL PERFORMANCE RECORDS								
	BW	WW	YW	SCROTAL	REA	%IMF	RIB FAT	RUMP FAT
RATIO		100						
ADJ TRAIT		489						

EXPECTED PROGENY DIFFERENCES							ULTRASOUND EPDs				
	BW	WW	YW	MILK	TM	SC	REA	%IMF	RIB FAT	RUMP FAT	
EPD	2.1	12	21	1	8	0.2					
ACC	0.26	0.42	0.36	0.17	-	0.21					

34 3081W2 3N1
CCC MISS CATALYST 3081W2
 Breeder: CAIN CATTLE CO. CALFINFORMATION
 DOB: 2/12/2009 BBUNo. C985594 Type: AI Horned
 Sex: F ID: 081Z2
 Color: RED WHT U/L BBU: C1024677
 Horn: Horns Sex: F
 DOB: 10/3/2012
 Color: RED WHT UL

AI: 11/15/2012 914 Dreamcatcher
 EXP: 914 Dreamcatcher C977250 12/2/2012 To 1/12/2013
 EXP: CF501 C1008372 1/12/2013 To 3/25/2013

**** L2 CAPTAIN SUGAR 12/02 LR C857153**
L TWO RANCH U 1/2 2/04 DNA 134A BT 7526A
CF DREAM CATCHER 914 LE C977250
COTTAGE FARM DNA US3000924 PV
**** OASIS 655 LE C828198**
COTTAGE FARM U 1/2 2/04 DNA 251620A BT 7628A
PEDIGREE OF CALF
CATALYST 729 729 LT C775905
CAIN U 1/00 BT 7216A
CCC MISS CATALYST 3081W2 3081W2 LH C985594
CAIN
3081 RH C885312
WINDY HILLS U 1/3 5/06 DNA 375538A BT BBU342

INDIVIDUAL PERFORMANCE RECORDS								
	BW	WW	YW	SCROTAL	REA	%IMF	RIB FAT	RUMP FAT
RATIO	97	87	92		91	107	97	
ADJ TRAIT	78	526	763		8.79	3.93	0.38	

EXPECTED PROGENY DIFFERENCES							ULTRASOUND EPDs				
	BW	WW	YW	MILK	TM	SC	REA	%IMF	RIB FAT	RUMP FAT	
EPD	1.2	5	15	6	9	0	-0.07	0.1	0	0.05	
ACC	0.54	0.51	0.51	0.31	-	0.33	0.45	0.48	0.47	0.34	

36 155/9 3N1
VF MS 155-9
 Breeder: VAUGHN FAMILY FARMS CALFINFORMATION
 DOB: 3/31/2009 BBUNo. C999376 Type: AI Horned
 Sex: F ID: 155Z
 Color: BLACK BBU: C1024679
 Horn: Polled Sex: M
 DOB: 9/24/2012
 Color: RED

AI: 11/15/2012 914 Dreamcatcher
 EXP: 914 Dreamcatcher C977250 12/2/2012 To 1/12/2013
 EXP: CF501 C1008372 1/12/2013 To 3/25/2013

**** L2 CAPTAIN SUGAR 12/02 LR C857153**
L TWO RANCH U 1/2 2/04 DNA 134A BT 7526A
CF DREAM CATCHER 914 LE C977250
COTTAGE FARM DNA US3000924 PV
**** OASIS 655 LE C828198**
COTTAGE FARM U 1/2 2/04 DNA 251620A BT 7628A
PEDIGREE OF CALF
MO-JO 1204/5 LE C913181
CHANNAROCK FARM U 2/06 DNA 961A BT 9256A
VF MS 155-9 155/9 LH C999376
VAUGHN FAMILY FARMS
588 LE C926124
CLARK JONES

INDIVIDUAL PERFORMANCE RECORDS								
	BW	WW	YW	SCROTAL	REA	%IMF	RIB FAT	RUMP FAT
RATIO	103	86	100		88	137	126	98
ADJ TRAIT	71	458	751		7.44	3.47	0.32	0.4

EXPECTED PROGENY DIFFERENCES							ULTRASOUND EPDs				
	BW	WW	YW	MILK	TM	SC	REA	%IMF	RIB FAT	RUMP FAT	
EPD	-2.2	-10	-11	-1	-6	-0.3	0.15	0	-0.01	-0.07	
ACC	0.51	0.45	0.41	0.24	-	0.31	0.26	0.26	0.26	0.26	

37 170X 3N1
 Breeder: CAIN CATTLE CO.
 DOB: 9/8/2010 BBUNo. C1003618
 Sex: F
 Color: BLACK PAINT
 Horn: Polled
 Al: 11/15/2012 914 Dreamcatcher
 EXP: 914 Dreamcatcher C977250 12/2/2012 To 1/12/2013
 EXP: CF501 C1008372 1/12/2013 To 3/25/2013

CALFINFORMATION
 Type: AI Polled
 ID: 170Z2
 BBU: C1024680
 Sex: F
 DOB: 10/6/2012
 Color: RED WHT UL

CATALYST 729 729 LT C775905
 CAIN U 1/00 BT 7216A
 CAINS CATALYST 305W6 305W6 LH C985607
 CAIN
 30/5 LH C916178
 WILMOTH & SONS DNA 343882A PV BT BBU344
 PEDIGREE OF CALF
 S & D 456 RH C911212
 CLARK JONES
 170X LH C1003618
 CAIN
 8170 8170 LH C963650
 CAIN

INDIVIDUAL PERFORMANCE RECORDS								
	BW	WW	YW	SCROTAL	REA	%IMF	RIB FAT	RUMP FAT
RATIO	100	95	100		103	100	86	103
ADJ TRAIT	80	597	840		12.27	4.56	0.35	0.5

EXPECTED PROGENY DIFFERENCES							ULTRASOUND EPDs			
	BW	WW	YW	MILK	TM	SC	REA	%IMF	RIB FAT	RUMP FAT
EPD	0.7	2	13	-1	1	-0.1	0.19	0.2	0.01	0.08
ACC	0.5	0.44	0.39	0.15	-	0.23	0.26	0.26	0.24	0.26

39 938X 3N1
 Breeder: CAIN CATTLE CO.
 DOB: 10/4/2010 BBUNo. C999485
 Sex: F
 Color: RED
 Horn: Polled
 Al: 11/15/2012 914 Dreamcatcher
 EXP: 914 Dreamcatcher C977250 12/2/2012 To 1/12/2013
 EXP: CF501 C1008372 1/12/2013 To 3/25/2013

CALFINFORMATION
 Type: AI Horned
 ID: 938Z
 BBU: C1024682
 Sex: F
 DOB: 8/20/2012
 Color: RED

** L2 CAPTAIN SUGAR 12/02 LR C857153
 L TWO RANCH U 1/2 2/04 DNA 134A BT 7526A
 CF DREAM CATCHER 914 LE C977250
 COTTAGE FARM DNA US3000924 PV
 ** OASIS 655 LE C828198
 COTTAGE FARM U 1/2 2/04 DNA 251620A BT 7628A
 PEDIGREE OF CALF
 4-35 LH C902794
 CASEY U 4/06 DNA US3000538 BT 9004A
 CAINS MS CASEY 4-35 938X 938X LH C999485
 CAIN
 CCC MISS BLK BAYOU 8938 8938 LH C985565
 CAIN DNA 555365A PV

INDIVIDUAL PERFORMANCE RECORDS								
	BW	WW	YW	SCROTAL	REA	%IMF	RIB FAT	RUMP FAT
RATIO	106		110		108	102	119	107
ADJ TRAIT	75		960		12.47	4.22	0.45	0.6

EXPECTED PROGENY DIFFERENCES							ULTRASOUND EPDs			
	BW	WW	YW	MILK	TM	SC	REA	%IMF	RIB FAT	RUMP FAT
EPD	-1.4	13	21	6	12	0.3	0.49	0.2	0.08	0.12
ACC	0.47	0.39	0.42	0.1	-	0.24	0.34	0.39	0.38	0.41

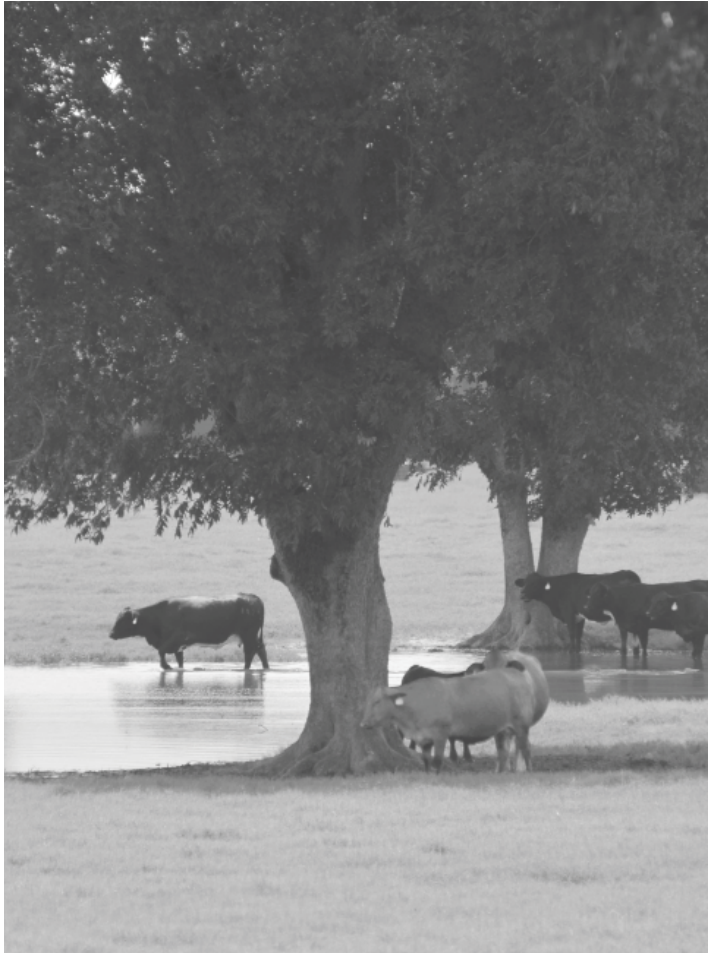
38 948X 3N1
 Breeder: CAIN CATTLE CO.
 DOB: 9/8/2010 BBUNo. C1003619
 Sex: F
 Color: RED PAINT
 Horn: Polled
 Al: 11/15/2012 914 Dreamcatcher
 EXP: 914 Dreamcatcher C977250 12/2/2012 To 1/12/2013
 EXP: CF501 C1008372 1/12/2013 To 3/25/2013

CALFINFORMATION
 Type: AI Polled
 ID: 948Z2
 BBU: C1024681
 Sex: F
 DOB: 9/13/2012
 Color: RED PAINT

CATALYST 729 729 LT C775905
 CAIN U 1/00 BT 7216A
 CAINS CATALYST 305W6 305W6 LH C985607
 CAIN
 30/5 LH C916178
 WILMOTH & SONS DNA 343882A PV BT BBU344
 PEDIGREE OF CALF
 BLOCKBUSTER 841 LE C923817
 COTTAGE FARM DNA US3000518 PV BT BBU453
 CAINS MS BLOCKBUSTER 948X 948X LH C1003619
 CAIN
 CCC MISS BLK BAYOU 8948 8948 LH C986827
 CAIN DNA 555370A

INDIVIDUAL PERFORMANCE RECORDS								
	BW	WW	YW	SCROTAL	REA	%IMF	RIB FAT	RUMP FAT
RATIO	94	113	113		103	85	84	121
ADJ TRAIT	85	691	993		11.86	3.66	0.49	0.89

EXPECTED PROGENY DIFFERENCES							ULTRASOUND EPDs			
	BW	WW	YW	MILK	TM	SC	REA	%IMF	RIB FAT	RUMP FAT
EPD	3	21	38	1	11	0.1	0.3	0	-0.03	0.26
ACC	0.52	0.5	0.5	0.19	-	0.31	0.45	0.5	0.45	0.48



40

114X

CAINS MS PUFF DADDY 114X

3N1

Breeder: CAIN CATTLE CO.

DOB: 10/5/2010 BBUNo. C1003600

Sex: F

Color: BLACK MOT U/L

Horn: Polled

AI: 11/15/2012 914 Dreamcatcher

EXP: 914 Dreamcatcher C977250 12/2/2012 To 1/12/2013

EXP: CF501 C1008372 1/12/2013 To 3/25/2013

CALFINFORMATION

Type: AI Horned

ID: 114Z

BBU: C1024683

Sex: F

DOB: 9/15/2012

Color: RED PAINT

CATALYST 729 729 LT C775905

CAIN U 1/00 BT 7216A

CAINS CATALYST 305W6 305W6 LH C985607

CAIN

30/5 LH C916178WILMOTH & SONS DNA 343882A PV BT BBU344**PEDIGREE OF CALF**PUFF DADDY 524 RH C917086CLARK JONES DNA US3000522 PV BT BBU380CAINS MS PUFF DADDY 114X 114X LH C1003600

CAIN

5114 LE C907130

CAIN

INDIVIDUAL PERFORMANCE RECORDS

	BW	WW	YW	SCROTAL	REA	%IMF	RIB FAT	RUMP FAT
RATIO	88	97	93		103	86	75	64
ADJ TRAIT	90	595	819		11.9	3.72	0.44	0.47

EXPECTED PROGENY DIFFERENCES

	BW	WW	YW	MILK	TM	SC	REA	%IMF	RIB FAT	RUMP FAT
EPD	1.2	8	10	5	9	0	0.33	0	0.06	-0.07
ACC	0.5	0.48	0.48	0.23	-	0.26	0.42	0.45	0.33	0.33

ULTRASOUND EPDs

	BW	WW	YW	MILK	TM	SC	REA	%IMF	RIB FAT	RUMP FAT
EPD	1.2	8	10	5	9	0	0.33	0	0.06	-0.07
ACC	0.5	0.48	0.48	0.23	-	0.26	0.42	0.45	0.33	0.33

41

936X

CAINS MS 4/35 936X

3N1

Breeder: CAIN CATTLE CO.

DOB: 10/7/2010 BBUNo. C1003617

Sex: F

Color: BLACK WHT U/L

Horn: Horns

AI: 11/15/2012 914 Dreamcatcher

EXP: 914 Dreamcatcher C977250 12/2/2012 To 1/12/2013

EXP: CF501 C1008372 1/12/2013 To 3/25/2013

CALFINFORMATION

Type: AI Scurred

ID: 936Z2

BBU: C1024684

Sex: F

DOB: 8/26/2012

Color: BROWNWHTUL

** L2 CAPTAIN SUGAR 12/02 LR C857153L TWO RANCH U 1/2 2/04 DNA 134A BT 7526ACF DREAM CATCHER 914 LE C977250COTTAGE FARM DNA US3000924 PV** OASIS 655 LE C828198COTTAGE FARM U 1/2 2/04 DNA 251620A BT 7628A**PEDIGREE OF CALF**4-35 LH C902794CASEY U 4/06 DNA US3000538 BT 9004ACAINS MS 4/35 936X 936X LH C1003617

CAIN

CCC MISS BLK BAYOU 8936 8936 LH C986823CAIN DNA 555364A

INDIVIDUAL PERFORMANCE RECORDS

	BW	WW	YW	SCROTAL	REA	%IMF	RIB FAT	RUMP FAT
RATIO	97	109	101		97	105	141	91
ADJ TRAIT	83	672	885		11.18	4.53	0.82	0.67

EXPECTED PROGENY DIFFERENCES

	BW	WW	YW	MILK	TM	SC	REA	%IMF	RIB FAT	RUMP FAT
EPD	-0.2	14	21	6	13	0.3	0.3	0.1	0.01	-0.03
ACC	0.47	0.45	0.45	0.1	-	0.28	0.38	0.42	0.31	0.42

ULTRASOUND EPDs

	BW	WW	YW	MILK	TM	SC	REA	%IMF	RIB FAT	RUMP FAT
EPD	-0.2	14	21	6	13	0.3	0.3	0.1	0.01	-0.03
ACC	0.47	0.45	0.45	0.1	-	0.28	0.38	0.42	0.31	0.42

CAINS MS PUFF DADDY 114X**42**

580

Pairs

Breeder: CAIN CATTLE CO.

DOB: 2/7/2005 BBUNo. C907113

Sex: F

Color: RED

Horn:

CALFINFORMATION

Type: AI

ID: 580A

BBU: C1024622

Sex: M

DOB: 3/3/2013

Color: DUN

** L2 CAPTAIN SUGAR 12/02 LR C857153L TWO RANCH U 1/2 2/04 DNA 134A BT 7526ACF DREAM CATCHER 914 LE C977250COTTAGE FARM DNA US3000924 PV** OASIS 655 LE C828198COTTAGE FARM U 1/2 2/04 DNA 251620A BT 7628A**PEDIGREE OF CALF**CATALYST 729 729 LT C775905CAIN U 1/00 BT 7216A580 LE C907113

CAIN

9-28 LH C814235

CASEY

INDIVIDUAL PERFORMANCE RECORDS

	BW	WW	YW	SCROTAL	REA	%IMF	RIB FAT	RUMP FAT
RATIO	115	93	91		98	118	86	155
ADJ TRAIT	59	512	747		10.79	4.06	0.22	0.64

EXPECTED PROGENY DIFFERENCES

	BW	WW	YW	MILK	TM	SC	REA	%IMF	RIB FAT	RUMP FAT
EPD	0.5	8	23	8	12	0	0.06	0.2	0.07	0.1
ACC	0.58	0.56	0.56	0.38	-	0.31	0.45	0.5	0.47	0.36

ULTRASOUND EPDs

	BW	WW	YW	MILK	TM	SC	REA	%IMF	RIB FAT	RUMP FAT
EPD	0.5	8	23	8	12	0	0.06	0.2	0.07	0.1
ACC	0.58	0.56	0.56	0.38	-	0.31	0.45	0.5	0.47	0.36

43

560

Pairs

Breeder: CLARK JONES
 DOB: 2/27/2005 BBUNo. C917064
 Sex: F PV: PV (DNA)
 Color: BLACK
 Horn: Classified: U
 DNA: 343881A

CALFINFORMATION

Type: AI
 ID: 560A
 BBU: C1024623
 Sex: F
 DOB: 2/24/2013
 Color: RED WHT UL

** L2 CAPTAIN SUGAR 12/02 LR C857153
 L TWO RANCH U 1/2 2/04 DNA 134A BT 7526A

CF DREAM CATCHER 914 LE C977250
 COTTAGE FARM DNA US3000924 PV

** OASIS 655 LE C828198
 COTTAGE FARM U 1/2 2/04 DNA 251620A BT 7628A

PEDIGREE OF CALF

CJ'S SOUL MAN 168 RH C867835
 CLARK JONES FARMS U 1/2 2/04 DNA US3000427 BT 7670A

560 RH C917064
 CLARK JONES U 5/06 DNA 343881A PV

6-080 LH C715050
 DUNKIN FARMS U 1/3 2/04 DNA 212A BT 8204A

INDIVIDUAL PERFORMANCE RECORDS

	BW	WW	YW	SCROTAL	REA	%IMF	RIB FAT	RUMP FAT
RATIO		100	100		100	100	100	100
ADJ TRAIT		520	702		10.48	4.47	0.49	0.6

EXPECTED PROGENY DIFFERENCES

ULTRASOUND EPDs

	BW	WW	YW	MILK	TM	SC	REA	%IMF	RIB FAT	RUMP FAT
EPD	-0.4	-1	2	-1	-2	-0.1	-0.01	0.1	-0.03	0.01
ACC	0.51	0.54	0.52	0.36	-	0.38	0.45	0.48	0.47	0.47

44

5139

Pairs

Breeder: CAIN CATTLE CO.
 DOB: 3/17/2005 BBUNo. C907106
 Sex: F
 Color: DARK RED STAR FACE
 Horn:

CALFINFORMATION

Type: AI
 ID: 139A
 BBU: C1024625
 Sex: F
 DOB: 3/14/2013
 Color: RED

** L2 CAPTAIN SUGAR 12/02 LR C857153
 L TWO RANCH U 1/2 2/04 DNA 134A BT 7526A

CF DREAM CATCHER 914 LE C977250
 COTTAGE FARM DNA US3000924 PV

** OASIS 655 LE C828198
 COTTAGE FARM U 1/2 2/04 DNA 251620A BT 7628A

PEDIGREE OF CALF

MR CCC 230 OF 684 230 LE C862168
 CAIN U 7/05 DNA 359A BT 7796A

5139 LE C907106
 CAIN

4-44 LH C668185
 CASEY

INDIVIDUAL PERFORMANCE RECORDS

	BW	WW	YW	SCROTAL	REA	%IMF	RIB FAT	RUMP FAT
RATIO	92	103						
ADJ TRAIT	75	567						

EXPECTED PROGENY DIFFERENCES

ULTRASOUND EPDs

	BW	WW	YW	MILK	TM	SC	REA	%IMF	RIB FAT	RUMP FAT
EPD	0.7	10	17	10	15	0.2	0.02	-0.1	-0.08	-0.19
ACC	0.52	0.54	0.52	0.33	-	0.26	0.24	0.23	0.19	0.23

560



Extreme length to go along with one of the more complete females in our donor program. This again combines the power of Soulman with the maternal genetic thrust of Cherokee Phantom. Imagine what Dream Catcher can do with this proven cow. We did and we know it will be awesome.

45

637

637

Pairs

Breeder: CAIN CATTLE CO.
 DOB: 2/16/2006 BBUNo. C931315
 Sex: F
 Color: RED STAR FACE MOT U/L
 Horn:

CALFINFORMATION

Type: AI
 ID: 637A
 BBU: C1024626
 Sex: M
 DOB: 2/23/2013
 Color: RED MOT UL

** L2 CAPTAIN SUGAR 12/02 LR C857153
 L TWO RANCH U 1/2 2/04 DNA 134A BT 7526A

CF DREAM CATCHER 914 LE C977250
 COTTAGE FARM DNA US3000924 PV

** OASIS 655 LE C828198
 COTTAGE FARM U 1/2 2/04 DNA 251620A BT 7628A

PEDIGREE OF CALF

CATALYST 729 729 LT C775905
 CAIN U 1/00 BT 7216A

637 637 BE C931315
 CAIN

460 LE C896889
 CAIN

INDIVIDUAL PERFORMANCE RECORDS

	BW	WW	YW	SCROTAL	REA	%IMF	RIB FAT	RUMP FAT
RATIO	114				104	106	67	94
ADJ TRAIT	58				9.81	3.52	0.17	0.38

EXPECTED PROGENY DIFFERENCES

ULTRASOUND EPDs

	BW	WW	YW	MILK	TM	SC	REA	%IMF	RIB FAT	RUMP FAT
EPD	0.5	22	39	15	26	0.4	0.04	0	-0.09	-0.05
ACC	0.56	0.51	0.52	0.34	-	0.33	0.42	0.47	0.45	0.48

46 658 658 Pairs

Breeder: CAIN CATTLE CO.
 DOB: 2/24/2006 BBUNo. C941384
 Sex: F
 Color: RED
 Horn:

CALFINFORMATION
 Type: AI
 ID: 658A
 BBU: C1024627
 Sex: F
 DOB: 3/13/2013
 Color: RED MOT UL

48 1056 CLASSIC LADY Pairs

Breeder: WELKENER'S RICO
 DOB: 10/5/2006 BBUNo. C932191
 Sex: F
 Color: RED
 Horn:

CALFINFORMATION
 Type: AI
 ID: 056A 056A2
 BBU: C1024653 C1024654
 Sex: F F
 DOB: 2/25/2013
 Color: RED M/UL

TWIN HEIFER CALVES

**** L2 CAPTAIN SUGAR 12/02 LR C857153**
L TWO RANCH U 1/2 2/04 DNA 134A BT 7526A

CF DREAM CATCHER 914 LE C977250
COTTAGE FARM DNA US3000924 PV

**** OASIS 655 LE C828198**
COTTAGE FARM U 1/2 2/04 DNA 251620A BT 7628A

PEDIGREE OF CALF

MC MOOSE 0088 LH C829056
JOERIS BT 7298A

658 658 BE C941384
CAIN

7-92 LH C757789
CASEY

INDIVIDUAL PERFORMANCE RECORDS										
	BW	WW	YW	SCROTAL	REA	%IMF	RIB FAT	RUMP FAT		
RATIO	96				115	119	122	127		
ADJ TRAIT	70				10.83	3.94	0.31	0.51		

EXPECTED PROGENY DIFFERENCES							ULTRASOUND EPDs				
	BW	WW	YW	MILK	TM	SC	REA	%IMF	RIB FAT	RUMP FAT	
EPD	1	19	19	9	19	0.4	-0.16	0.1	0.04	0.21	
ACC	0.55	0.52	0.51	0.29	-	0.28	0.38	0.41	0.39	0.42	

47 617 617 Pairs

Breeder: T V R
 DOB: 3/1/2006 BBUNo. C939784
 Sex: F
 Color: BLACK
 Horn:
 DNA: 9000724117

CALFINFORMATION
 Type: AI
 ID: 617A
 BBU: C1024628
 Sex: F
 DOB: 2/28/2013
 Color: RED PAINT

**** L2 CAPTAIN SUGAR 12/02 LR C857153**
L TWO RANCH U 1/2 2/04 DNA 134A BT 7526A

CF DREAM CATCHER 914 LE C977250
COTTAGE FARM DNA US3000924 PV

**** OASIS 655 LE C828198**
COTTAGE FARM U 1/2 2/04 DNA 251620A BT 7628A

PEDIGREE OF CALF

ONYX 415-1 LE C837437
T V R U 5/03 DNA 364383A BT 7530A

617 LE C939784
T V R DNA 9000724117

SIERRA 91/99 LH C790043
L TWO RANCH U 2/00 BT 6925C

INDIVIDUAL PERFORMANCE RECORDS										
	BW	WW	YW	SCROTAL	REA	%IMF	RIB FAT	RUMP FAT		
RATIO										
ADJ TRAIT										

EXPECTED PROGENY DIFFERENCES							ULTRASOUND EPDs			
	BW	WW	YW	MILK	TM	SC	REA	%IMF	RIB FAT	RUMP FAT
EPD	1.2	9	15	2	6	0	0	0	-0.02	-0.02
ACC	0.48	0.47	0.44	0.36	-	0.31	0.31	0.29	0.29	0.29

**** L2 CAPTAIN SUGAR 12/02 LR C857153**
L TWO RANCH U 1/2 2/04 DNA 134A BT 7526A

CF DREAM CATCHER 914 LE C977250
COTTAGE FARM DNA US3000924 PV

**** OASIS 655 LE C828198**
COTTAGE FARM U 1/2 2/04 DNA 251620A BT 7628A

PEDIGREE OF CALF

37/4 LH C908487
B M W RICO II U 6/05

CLASSIC LADY 1056 LE C932191
WELKENER'S RICO

MADAM MARTIN 922/4 LH C905881
WELKENER'S RICO

INDIVIDUAL PERFORMANCE RECORDS										
	BW	WW	YW	SCROTAL	REA	%IMF	RIB FAT	RUMP FAT		
RATIO	94				100	100	100	100		
ADJ TRAIT	89				9.76	1.3	0.26	0.37		

EXPECTED PROGENY DIFFERENCES							ULTRASOUND EPDs			
	BW	WW	YW	MILK	TM	SC	REA	%IMF	RIB FAT	RUMP FAT
EPD	2.3	16	24	-1	7	0.1	0.13	-0.1	-0.01	0
ACC	0.28	0.29	0.28	0.24	-	0.17	0.12	0.1	0.1	0.1



Onyx and Synergy combine here for a female destined to help increase the quality and performance of our program. Great depth of body and maternal characteristics are a real plus and 617 brings it all together.

49 770/7 Pairs

Breeder: COLLIER FARMS
 DOB: 1/2/2007 BBUNo. C951896
 Sex: F
 Color: RED
 Horn: Horns Classified: U

CALFINFORMATION
 Type: AI
 ID: 707A
 BBU: C1024629
 Sex: F
 DOB: 3/15/2013
 Color: RED WHT UL

**** L2 CAPTAIN SUGAR 12/02 LR C857153**
L TWO RANCH U 1/2 2/04 DNA 134A BT 7526A

CF DREAM CATCHER 914 LE C977250
COTTAGE FARM DNA US3000924 PV

**** OASIS 655 LE C828198**
COTTAGE FARM U 1/2 2/04 DNA 251620A BT 7628A

PEDIGREE OF CALF

7 007 LH C823650
SEVEN-C ANDERSON CAT U 1/01 DNA 646A BT 8866A

770/7 LH C951896
COLLIER FARMS U 1/08

ZIPPY LADY 572/8 LE C782021
COLLIER FARMS U 4/99 DNA 308101A BT BBU164

INDIVIDUAL PERFORMANCE RECORDS								
	BW	WW	YW	SCROTAL	REA	%IMF	RIB FAT	RUMP FAT
RATIO	103	111						
ADJ TRAIT	72	632						

EXPECTED PROGENY DIFFERENCES							ULTRASOUND EPDs			
	BW	WW	YW	MILK	TM	SC	REA	%IMF	RIB FAT	RUMP FAT
EPD	-0.1	18	16	0	9	0.5	-0.14	0	-0.04	-0.02
ACC	0.52	0.5	0.42	0.26	-	0.23	PE	PE	PE	PE

50 8829 Pairs

Breeder: CAIN CATTLE CO.
 DOB: 10/14/2007 BBUNo. C966409
 Sex: F
 Color: RED
 Horn:

CALFINFORMATION
 Type: AI
 ID: 829A
 BBU: C1024631
 Sex: M
 DOB: 2/25/2013
 Color: RED MOT UL

**** L2 CAPTAIN SUGAR 12/02 LR C857153**
L TWO RANCH U 1/2 2/04 DNA 134A BT 7526A

CF DREAM CATCHER 914 LE C977250
COTTAGE FARM DNA US3000924 PV

**** OASIS 655 LE C828198**
COTTAGE FARM U 1/2 2/04 DNA 251620A BT 7628A

PEDIGREE OF CALF

PUFF DADDY 524 RH C917086
CLARK JONES DNA US3000522 PV BT BBU380

8829 8829 C966409
CAIN

BJR 145/5 145/5 LH C715161
BJR SUMMERFORD DNA 1154A BT 9450A

INDIVIDUAL PERFORMANCE RECORDS								
	BW	WW	YW	SCROTAL	REA	%IMF	RIB FAT	RUMP FAT
RATIO	99				100	100	100	100
ADJ TRAIT	67				8.06	3.38	0.29	0.56

EXPECTED PROGENY DIFFERENCES							ULTRASOUND EPDs			
	BW	WW	YW	MILK	TM	SC	REA	%IMF	RIB FAT	RUMP FAT
EPD	0.8	26	36	3	16	0.7	0.26	0.2	0.12	0.16
ACC	0.55	0.48	0.51	0.29	-	0.28	0.45	0.48	0.47	0.41



51 8857 Pairs

Breeder: CAIN CATTLE CO.
 DOB: 12/14/2007 BBUNo. C969532
 Sex: F
 Color: RED
 Horn:

CALFINFORMATION
 Type: AI
 ID: 857A
 BBU: C1024632
 Sex: M
 DOB: 2/23/2013
 Color: RED

**** L2 CAPTAIN SUGAR 12/02 LR C857153**
L TWO RANCH U 1/2 2/04 DNA 134A BT 7526A

CF DREAM CATCHER 914 LE C977250
COTTAGE FARM DNA US3000924 PV

**** OASIS 655 LE C828198**
COTTAGE FARM U 1/2 2/04 DNA 251620A BT 7628A

PEDIGREE OF CALF

8-76 LH C788040
CASEY U 9/08 DNA 282A BT 8323A

8857 8857 LH C969532
CAIN

*** TIGER BABY 684 LE C725195**
HARROD FARMS U 1/2 6/98 DNA 1152A BT 6219B

INDIVIDUAL PERFORMANCE RECORDS								
	BW	WW	YW	SCROTAL	REA	%IMF	RIB FAT	RUMP FAT
RATIO	86	100						
ADJ TRAIT	77	499						

EXPECTED PROGENY DIFFERENCES							ULTRASOUND EPDs			
	BW	WW	YW	MILK	TM	SC	REA	%IMF	RIB FAT	RUMP FAT
EPD	2.1	15	21	4	11	0.4	0.21	-0.1	0.01	-0.14
ACC	0.55	0.45	0.44	0.26	-	0.28	0.29	0.31	0.29	0.31

52 8137 8137 Pairs

Breeder: CAIN CATTLE CO.
 DOB: 4/11/2008 BBUNo. C961650
 Sex: F
 Color: BLACK
 Horn:

CALFINFORMATION
 Type: AI
 ID: 137A
 BBU: C1024634
 Sex: M
 DOB: 2/24/2013
 Color: BLACK MOT UL

53 8903 8903 Pairs

Breeder: CAIN CATTLE CO.
 DOB: 8/15/2008 BBUNo. C985555
 Sex: F
 Color: RED PAINT STAR FACE
 Horn: Polled
 DNA: 555352A

CALFINFORMATION
 Type: AI
 ID: 903A2
 BBU: C1024635
 Sex: M
 DOB: 3/13/2013
 Color: BLACK WHT UL

**** L2 CAPTAIN SUGAR 12/02 LR C857153**
L TWO RANCH U 1/2 2/04 DNA 134A BT 7526A

CF DREAM CATCHER 914 LE C977250
COTTAGE FARM DNA US3000924 PV

**** OASIS 655 LE C828198**
COTTAGE FARM U 1/2 2/04 DNA 251620A BT 7628A

PEDIGREE OF CALF

S & D 456 RH C911212
CLARK JONES

8137 8137 LH C961650
CAIN

2-34 LH C876598
CASEY

**** L2 CAPTAIN SUGAR 12/02 LR C857153**
L TWO RANCH U 1/2 2/04 DNA 134A BT 7526A

CF DREAM CATCHER 914 LE C977250
COTTAGE FARM DNA US3000924 PV

**** OASIS 655 LE C828198**
COTTAGE FARM U 1/2 2/04 DNA 251620A BT 7628A

PEDIGREE OF CALF

BLACK BAYOU 1071/3 LE C892444
CHANNAROCK FARM U 1/2 5/06 DNA US3000542 BT 8891A

CCC MISS BLK BAYOU 8903 8903 LH C985555
CAIN DNA 555352A PV

9-70 LH C814276
CASEY DNA 492777A

INDIVIDUAL PERFORMANCE RECORDS								
	BW	WW	YW	SCROTAL	REA	%IMF	RIB FAT	RUMP FAT
RATIO	100	91	98		102	124	128	98
ADJ TRAIT	65	480	796		10.89	4.93	0.36	0.44

INDIVIDUAL PERFORMANCE RECORDS								
	BW	WW	YW	SCROTAL	REA	%IMF	RIB FAT	RUMP FAT
RATIO	114	96	95		96	141	159	99
ADJ TRAIT	50	442	670		9.24	3.71	0.42	0.39

EXPECTED PROGENY DIFFERENCES							ULTRASOUND EPDs			
	BW	WW	YW	MILK	TM	SC	REA	%IMF	RIB FAT	RUMP FAT
EPD	-0.1	-5	2	1	-2	-0.1	0.18	0.4	0.2	-0.01
ACC	0.54	0.52	0.51	0.24	-	0.23	0.41	0.45	0.44	0.47

EXPECTED PROGENY DIFFERENCES							ULTRASOUND EPDs			
	BW	WW	YW	MILK	TM	SC	REA	%IMF	RIB FAT	RUMP FAT
EPD	-0.2	10	10	5	11	0.2	0.11	0.2	0.09	0.18
ACC	0.55	0.54	0.54	0.31	-	0.34	0.45	0.48	0.39	0.51

54 8166 8166 Pairs

Breeder: CAIN CATTLE CO.
 DOB: 8/20/2008 BBUNo. C963647
 Sex: F
 Color: RED
 Horn:

CALFINFORMATION
 Type: AI
 ID: 166A
 BBU: C1024636
 Sex: F
 DOB: 3/10/2013
 Color: RED WHT UL

55 8169 8169 Pairs

Breeder: CAIN CATTLE CO.
 DOB: 8/25/2008 BBUNo. C963649
 Sex: F
 Color: RED
 Horn:

CALFINFORMATION
 Type: AI
 ID: 169A
 BBU: C1024637
 Sex: M
 DOB: 3/19/2013
 Color: RED MOT UL

**** L2 CAPTAIN SUGAR 12/02 LR C857153**
L TWO RANCH U 1/2 2/04 DNA 134A BT 7526A

CF DREAM CATCHER 914 LE C977250
COTTAGE FARM DNA US3000924 PV

**** OASIS 655 LE C828198**
COTTAGE FARM U 1/2 2/04 DNA 251620A BT 7628A

PEDIGREE OF CALF

BLOCKBUSTER 841 LE C923817
COTTAGE FARM DNA US3000518 PV BT BBU453

8166 8166 LH C963647
CAIN

2-55 LH C876481
CASEY

**** L2 CAPTAIN SUGAR 12/02 LR C857153**
L TWO RANCH U 1/2 2/04 DNA 134A BT 7526A

CF DREAM CATCHER 914 LE C977250
COTTAGE FARM DNA US3000924 PV

**** OASIS 655 LE C828198**
COTTAGE FARM U 1/2 2/04 DNA 251620A BT 7628A

PEDIGREE OF CALF

BLOCKBUSTER 841 LE C923817
COTTAGE FARM DNA US3000518 PV BT BBU453

8169 8169 LH C963649
CAIN

2-70 LH C876631
CASEY

INDIVIDUAL PERFORMANCE RECORDS								
	BW	WW	YW	SCROTAL	REA	%IMF	RIB FAT	RUMP FAT
RATIO	111	95	92		82	107	157	105
ADJ TRAIT	55	562	760		8.74	3.63	0.56	0.59

INDIVIDUAL PERFORMANCE RECORDS								
	BW	WW	YW	SCROTAL	REA	%IMF	RIB FAT	RUMP FAT
RATIO	103	100	101		109	113	101	96
ADJ TRAIT	60	596	841		11.61	3.84	0.36	0.54

EXPECTED PROGENY DIFFERENCES							ULTRASOUND EPDs			
	BW	WW	YW	MILK	TM	SC	REA	%IMF	RIB FAT	RUMP FAT
EPD	-0.2	2	8	0	1	-0.2	0.04	0.2	0.07	0.22
ACC	0.51	0.47	0.47	0.21	-	0.29	0.39	0.42	0.33	0.44

EXPECTED PROGENY DIFFERENCES							ULTRASOUND EPDs			
	BW	WW	YW	MILK	TM	SC	REA	%IMF	RIB FAT	RUMP FAT
EPD	0.5	9	22	4	9	-0.1	0.42	0.2	0.17	0.18
ACC	0.51	0.48	0.47	0.24	-	0.26	0.39	0.42	0.41	0.44

56 850 MISS CJ 850 Pairs

Breeder: CLARK JONES
 DOB: 9/29/2008 BBUNo. C976146
 Sex: F
 Color: BLACK
 Horn: Polled

CALFINFORMATION
 Type: AI
 ID: 850A
 BBU: C1024638
 Sex: F
 DOB: 2/28/2013
 Color: RED MOT UL

**** L2 CAPTAIN SUGAR 12/02 LR C857153**
L TWO RANCH U 1/2 2/04 DNA 134A BT 7526A

CF DREAM CATCHER 914 LE C977250
COTTAGE FARM DNA US3000924 PV

**** OASIS 655 LE C828198**
COTTAGE FARM U 1/2 2/04 DNA 251620A BT 7628A

PEDIGREE OF CALF

C J'S MOTOWN 412 LE C901889
LAZY SUZAN RANCH U 1/3 5/06 DNA US3000443 BT 8804A

MISS CJ 850 850 LE C976146
CLARK JONES

1625 LE C923750
DUNKIN'S FOUR D U 3/07

INDIVIDUAL PERFORMANCE RECORDS								
	BW	WW	YW	SCROTAL	REA	%IMF	RIB FAT	RUMP FAT
RATIO	106	94	95		104	100	116	120
ADJ TRAIT	57	460	771		10.41	3.5	0.52	0.68

EXPECTED PROGENY DIFFERENCES							ULTRASOUND EPDs				
	BW	WW	YW	MILK	TM	SC	REA	%IMF	RIB FAT	RUMP FAT	
EPD	-3.5	13	19	-3	4	0.8	-0.11	0.1	0.02	0.03	
ACC	0.52	0.52	0.51	0.26	-	0.36	0.42	0.47	0.42	0.47	

57 897W6 Pairs
CCC MS BLOCKBUSTER 897W6

Breeder: CAIN CATTLE CO.
 DOB: 2/21/2009 BBUNo. C985675
 Sex: F
 Color: BLACK WHT U/L
 Horn: Polled

CALFINFORMATION
 Type: AI
 ID: 897A2
 BBU: C1024640
 Sex: F
 DOB: 2/25/2013
 Color: RED WHT UL

**** L2 CAPTAIN SUGAR 12/02 LR C857153**
L TWO RANCH U 1/2 2/04 DNA 134A BT 7526A

CF DREAM CATCHER 914 LE C977250
COTTAGE FARM DNA US3000924 PV

**** OASIS 655 LE C828198**
COTTAGE FARM U 1/2 2/04 DNA 251620A BT 7628A

PEDIGREE OF CALF

BLOCKBUSTER 841 LE C923817
COTTAGE FARM DNA US3000518 PV BT BBU453


CCC MS BLOCKBUSTER 897W6 897W6 LH C985675
CAIN

897 LE C923811
COTTAGE FARM DNA 343883A BT BBU343

INDIVIDUAL PERFORMANCE RECORDS								
	BW	WW	YW	SCROTAL	REA	%IMF	RIB FAT	RUMP FAT
RATIO	84	105						
ADJ TRAIT	88	635						

EXPECTED PROGENY DIFFERENCES							ULTRASOUND EPDs				
	BW	WW	YW	MILK	TM	SC	REA	%IMF	RIB FAT	RUMP FAT	
EPD	2.4	10	16	-3	2	-0.2	0.05	0.2	0.03	0.19	
ACC	0.56	0.55	0.5	0.28	-	0.36	PE	PE	PE	PE	

MISS CJ 850



Motown with Xcite, Cavalier, Grand Cherokee and Lady Victoria! Great EPDs and tremendous production ability. Sells with new Dream Catcher heifer!

58 118 Pairs
FRENZEL 0118

Breeder: F BAR
 DOB: 2/8/2010 BBUNo. C1000430
 Sex: F
 Color: RED
 Horn: Horns Classified: U 1/1

CALFINFORMATION
 Type: AI
 ID: 118A
 BBU: C1024650
 Sex: F
 DOB: 3/28/2013
 Color: RED

CF SUGAR BRITCHES 040 LE C940465
COTTAGE FARM DNA 345274A

506 LE C1008377
COTTAGE FARM DNA US9001082129

175 LE C980952
COTTAGE FARM

PEDIGREE OF CALF

L BAR 6190 6190 LH C935644
L BAR

FRENZEL 0118 0118 LH C1000430
F BAR U 1/1 2/11

8210 LH C967477
F BAR

INDIVIDUAL PERFORMANCE RECORDS								
	BW	WW	YW	SCROTAL	REA	%IMF	RIB FAT	RUMP FAT
RATIO	96	101	95		116	122	137	106
ADJ TRAIT	74	595	802		13.2	3.36	0.35	0.44

EXPECTED PROGENY DIFFERENCES							ULTRASOUND EPDs				
	BW	WW	YW	MILK	TM	SC	REA	%IMF	RIB FAT	RUMP FAT	
EPD	-1	8	9	4	8	0.2	0.33	0.2	0.18	0.12	
ACC	0.47	0.47	0.47	0.14	-	0.26	0.39	0.45	0.44	0.47	

59 934X **CAINS MS S&D 934X** Pairs

Breeder: CAIN CATTLE CO.
 DOB: 2/18/2010 BBUNo. C995754
 Sex: F
 Color: RED
 Horn: Polled

CALFINFORMATION
 Type: AI
 ID: 934A
 BBU: C1024641
 Sex: F
 DOB: 2/18/2013
 Color: RED

60 11-10 **LADY AGGIE** Pairs

Breeder: BOUNDS
 DOB: 2/19/2010 BBUNo. C997459
 Sex: F
 Color: RED
 Horn:

CALFINFORMATION
 Type: AI
 ID: 110A
 BBU: C1024692
 Sex: F
 DOB: 4/1/2013
 Color: RED

**** L2 CAPTAIN SUGAR 12/02 LR C857153**
L TWO RANCH U 1/2 2/04 DNA 134A BT 7526A

CF DREAM CATCHER 914 LE C977250
COTTAGE FARM DNA US3000924 PV

**** OASIS 655 LE C828198**
COTTAGE FARM U 1/2 2/04 DNA 251620A BT 7628A

PEDIGREE OF CALF

S & D 456 RH C911212
CLARK JONES

CAINS MS S&D 934X 934X LH C995754
CAIN

9-34 LH C814241
CASEY

CF SUGAR BRITCHES 040 LE C940465
COTTAGE FARM DNA 345274A

506 LE C1008377
COTTAGE FARM DNA US9001082129

175 LE C980952
COTTAGE FARM

PEDIGREE OF CALF

BULLET PROOF 864 LE C931489
COTTAGE FARM U 4/08 DNA US9000957935 PV

LADY AGGIE 11-10 LE C997459
BOUNDS

AGGIE SPLASH 4398 LE C783812
D FIVE

INDIVIDUAL PERFORMANCE RECORDS								
	BW	WW	YW	SCROTAL	REA	%IMF	RIB FAT	RUMP FAT
RATIO	95	98	95		103	148	120	68
ADJ TRAIT	80	564	783		12.06	6.64	0.44	0.36

INDIVIDUAL PERFORMANCE RECORDS								
	BW	WW	YW	SCROTAL	REA	%IMF	RIB FAT	RUMP FAT
RATIO	100	100	100		100	100	100	100
ADJ TRAIT	68	471	927		12.14	3.22	0.49	0.65

EXPECTED PROGENY DIFFERENCES						ULTRASOUND EPDs				
	BW	WW	YW	MILK	TM	SC	REA	%IMF	RIB FAT	RUMP FAT
EPD	1.1	5	13	2	5	0.1	0.19	0.2	0.1	0.07
ACC	0.48	0.47	0.47	0.19	-	0.21	0.36	0.21	0.36	0.24

EXPECTED PROGENY DIFFERENCES						ULTRASOUND EPDs				
	BW	WW	YW	MILK	TM	SC	REA	%IMF	RIB FAT	RUMP FAT
EPD	0.2	8	13	3	7	0.3	-0.07	0	-0.03	-0.03
ACC	0.29	0.29	0.28	0.15	-	0.15	0.15	0.15	0.14	0.15

61 532X **CAINS MS BLOCKBUSTER 532X** Pairs

Breeder: CAIN CATTLE CO.
 DOB: 2/19/2010 BBUNo. C995743
 Sex: F
 Color: RED
 Horn: Polled

CALFINFORMATION
 Type: AI
 ID: 532A
 BBU: C1024642
 Sex: M
 DOB: 3/25/2013
 Color: RED

62 635X **CAINS MS 4-35CSY 635X** Pairs

Breeder: CAIN CATTLE CO.
 DOB: 2/19/2010 BBUNo. C998743
 Sex: F
 Color: RED
 Horn: Horns

CALFINFORMATION
 Type: AI
 ID: 635A
 BBU: C1024693
 Sex: M
 DOB: 4/2/2013
 Color: RED

CF SUGAR BRITCHES 040 LE C940465
COTTAGE FARM DNA 345274A

506 LE C1008377
COTTAGE FARM DNA US9001082129

175 LE C980952
COTTAGE FARM

PEDIGREE OF CALF

BLOCKBUSTER 841 LE C923817
COTTAGE FARM DNA US3000518 PV BT BBU453

CAINS MS BLOCKBUSTER 532X 532X LH C995743
CAIN

5-32 LH C918780
CASEY

CF SUGAR BRITCHES 040 LE C940465
COTTAGE FARM DNA 345274A

506 LE C1008377
COTTAGE FARM DNA US9001082129

175 LE C980952
COTTAGE FARM

PEDIGREE OF CALF

4-35 LH C902794
CASEY U 4/06 DNA US3000538 BT 9004A

CAINS MS 4-35CSY 635X 635X LH C998743
CAIN

6-35 LH C934831
CASEY

INDIVIDUAL PERFORMANCE RECORDS								
	BW	WW	YW	SCROTAL	REA	%IMF	RIB FAT	RUMP FAT
RATIO	115	100	104		97	86	104	125
ADJ TRAIT	65	574	856		11.34	3.84	0.38	0.66

INDIVIDUAL PERFORMANCE RECORDS								
	BW	WW	YW	SCROTAL	REA	%IMF	RIB FAT	RUMP FAT
RATIO	100	85	94		116	88	76	81
ADJ TRAIT	76	484	775		13.59	3.94	0.28	0.43

EXPECTED PROGENY DIFFERENCES						ULTRASOUND EPDs				
	BW	WW	YW	MILK	TM	SC	REA	%IMF	RIB FAT	RUMP FAT
EPD	-2	1	8	1	2	-0.1	0.1	0.1	0.07	0.32
ACC	0.51	0.44	0.44	0.14	-	0.23	0.39	0.44	0.41	0.44

EXPECTED PROGENY DIFFERENCES						ULTRASOUND EPDs				
	BW	WW	YW	MILK	TM	SC	REA	%IMF	RIB FAT	RUMP FAT
EPD	-1.6	-7	2	9	5	-0.4	0.55	0.1	0	-0.07
ACC	0.48	0.45	0.45	0.12	-	0.24	0.38	0.42	0.41	0.45

63 611X CAINS MS 4-35CSY 611X Pairs

Breeder: CAIN
 DOB: 2/25/2010 BBUNo. C998741
 Sex: F
 Color: RED
 Horn: Scurs

CALFINFORMATION
 Type: NS
 ID: 611A
 BBU: C1024744
 Sex: M
 DOB: 4/8/2013
 Color: RED

64 613X CAINS MS 4-35CSY 613X Pairs

Breeder: CAIN CATTLE CO.
 DOB: 3/1/2010 BBUNo. C998742
 Sex: F
 Color: RED
 Horn: Horns

CALFINFORMATION
 Type: AI
 ID: 613A
 BBU: C1024643
 Sex: M
 DOB: 3/15/2013
 Color: RED

**** INFINITY 120/96 LH C706197**
L TWO RANCH U 1/2 12/97 DNA 674A BT 5956A

501 LE C1008372
 COTTAGE FARM DNA US9001082130 PV

**** OASIS 655 LE C828198**
 COTTAGE FARM U 1/2 2/04 DNA 251620A BT 7628A

PEDIGREE OF CALF

4-35 LH C902794
 CASEY U 4/06 DNA US3000538 BT 9004A

CAINS MS 4-35CSY 611X 611X LH C998741
 CAIN

6-11 LH C934853
 CASEY

CF SUGAR BRITCHES 040 LE C940465
COTTAGE FARM DNA 345274A

506 LE C1008377
 COTTAGE FARM DNA US9001082129

175 LE C980952
 COTTAGE FARM

PEDIGREE OF CALF

4-35 LH C902794
 CASEY U 4/06 DNA US3000538 BT 9004A

CAINS MS 4-35CSY 613X 613X LH C998742
 CAIN

6-13 LH C934836
 CASEY

INDIVIDUAL PERFORMANCE RECORDS								
	BW	WW	YW	SCROTAL	REA	%IMF	RIB FAT	RUMP FAT
RATIO	118	97	86		113	155	76	47
ADJ TRAIT	63	556	713		13.18	6.96	0.28	0.25

INDIVIDUAL PERFORMANCE RECORDS								
	BW	WW	YW	SCROTAL	REA	%IMF	RIB FAT	RUMP FAT
RATIO	110	100	98		105	131	136	129
ADJ TRAIT	69	572	810		12.23	5.86	0.5	0.68

EXPECTED PROGENY DIFFERENCES						ULTRASOUND EPDs				
	BW	WW	YW	MILK	TM	SC	REA	%IMF	RIB FAT	RUMP FAT
EPD	-2.9	-5	-7	8	6	-0.2	0.44	0	-0.05	-0.02
ACC	0.48	0.45	0.45	0.1	-	0.24	0.38	0.24	0.38	0.26

EXPECTED PROGENY DIFFERENCES						ULTRASOUND EPDs				
	BW	WW	YW	MILK	TM	SC	REA	%IMF	RIB FAT	RUMP FAT
EPD	-3.2	-6	-8	8	5	-0.1	0.35	0.5	0.18	0.28
ACC	0.5	0.44	0.45	0.08	-	0.23	0.38	0.41	0.29	0.44

65 053X CAINS MS 4-35CSY 053X Pairs

Breeder: CAIN CATTLE CO.
 DOB: 3/4/2010 BBUNo. C995716
 Sex: F
 Color: RED
 Horn: Horns

CALFINFORMATION
 Type: AI
 ID: 053A
 BBU: C1024644
 Sex: F
 DOB: 3/18/2013
 Color: RED

66 897X CAINS MS BLOCKBUSTER 897X Pairs

Breeder: CAIN CATTLE CO.
 DOB: 3/29/2010 BBUNo. C995753
 Sex: F
 Color: RED MOT U/L
 Horn: Polled

CALFINFORMATION
 Type: AI
 ID: 897A
 BBU: C1024645
 Sex: F
 DOB: 2/20/2013
 Color: RED WHT UL

CF SUGAR BRITCHES 040 LE C940465
COTTAGE FARM DNA 345274A

506 LE C1008377
 COTTAGE FARM DNA US9001082129

175 LE C980952
 COTTAGE FARM

PEDIGREE OF CALF

4-35 LH C902794
 CASEY U 4/06 DNA US3000538 BT 9004A

CAINS MS 4-35CSY 053X 053X LH C995716
 CAIN

0-53 LH C836841
 CASEY

**** L2 CAPTAIN SUGAR 12/02 LR C857153**
L TWO RANCH U 1/2 2/04 DNA 134A BT 7526A

CF DREAM CATCHER 914 LE C977250
 COTTAGE FARM DNA US3000924 PV

**** OASIS 655 LE C828198**
 COTTAGE FARM U 1/2 2/04 DNA 251620A BT 7628A

PEDIGREE OF CALF

BLOCKBUSTER 841 LE C923817
 COTTAGE FARM DNA US3000518 PV BT BBU453

CAINS MS BLOCKBUSTER 897X 897X LH C995753
 CAIN

897 LE C923811
 COTTAGE FARM DNA 343883A BT BBU343

INDIVIDUAL PERFORMANCE RECORDS								
	BW	WW	YW	SCROTAL	REA	%IMF	RIB FAT	RUMP FAT
RATIO	89	117	100		114	93	106	104
ADJ TRAIT	85	672	824		13.37	4.17	0.39	0.55

INDIVIDUAL PERFORMANCE RECORDS								
	BW	WW	YW	SCROTAL	REA	%IMF	RIB FAT	RUMP FAT
RATIO	102	80	87		94	110	83	107
ADJ TRAIT	82	484	765		10.53	4.13	0.27	0.58

EXPECTED PROGENY DIFFERENCES						ULTRASOUND EPDs				
	BW	WW	YW	MILK	TM	SC	REA	%IMF	RIB FAT	RUMP FAT
EPD	0.2	9	11	8	12	0.1	0.45	0.1	0.06	0.05
ACC	0.48	0.47	0.45	0.1	-	0.28	0.36	0.41	0.39	0.42

EXPECTED PROGENY DIFFERENCES						ULTRASOUND EPDs				
	BW	WW	YW	MILK	TM	SC	REA	%IMF	RIB FAT	RUMP FAT
EPD	1.1	0	5	-4	-4	-0.4	0.03	0.2	0	0.23
ACC	0.54	0.54	0.54	0.24	-	0.36	0.48	0.52	0.51	0.52

67 138X Pairs
CAINS MS BLOCKBUSTER 138X
Breeder: CAIN
DOB: 4/13/2010 BBUNo. C995729
Sex: F
Color: RED MOT U/L
Horn: Scurs

CALFINFORMATION
Type: NS
ID: 138A
BBU: C1024743
Sex: M
DOB: 4/8/2013
Color: RED WHT UL

68 201X Pairs
CAINS MS BLOCKBUSTER 201X
Breeder: CAIN CATTLE CO.
DOB: 9/16/2010 BBUNo. C1003605
Sex: F
Color: RED
Horn: Scurs

CALFINFORMATION
Type: AI
ID: 201A
BBU: C1024646
Sex: F
DOB: 3/28/2013
Color: RED

**** INFINITY 120/96 LH C706197**
L TWO RANCH U 1/2 12/97 DNA 674A BT 5956A

501 LE C1008372
COTTAGE FARM DNA US9001082130 PV

**** OASIS 655 LE C828198**
COTTAGE FARM U 1/2 2/04 DNA 251620A BT 7628A

PEDIGREE OF CALF

BLOCKBUSTER 841 LE C923817
COTTAGE FARM DNA US3000518 PV BT BBU453

CAINS MS BLOCKBUSTER 138X 138X LH C995729
CAIN

5138 LE C907105
CAIN

**** INFINITY 120/96 LH C706197**
L TWO RANCH U 1/2 12/97 DNA 674A BT 5956A

501 LE C1008372
COTTAGE FARM DNA US9001082130 PV

**** OASIS 655 LE C828198**
COTTAGE FARM U 1/2 2/04 DNA 251620A BT 7628A

PEDIGREE OF CALF

BLOCKBUSTER 841 LE C923817
COTTAGE FARM DNA US3000518 PV BT BBU453

CAINS MS BLOCKBUSTER 201X 201X LH C1003605
CAIN

2201 LE C872045
SPEAR RANCHES DNA 9000724113

INDIVIDUAL PERFORMANCE RECORDS								
	BW	WW	YW	SCROTAL	REA	%IMF	RIB FAT	RUMP FAT
RATIO	100	112	100		100	100	100	100
ADJ TRAIT	79	640	834		14.26	3.51	0.45	0.61

INDIVIDUAL PERFORMANCE RECORDS								
	BW	WW	YW	SCROTAL	REA	%IMF	RIB FAT	RUMP FAT
RATIO	105	119	107		100	108	129	142
ADJ TRAIT	71	659	877		8.89	4.38	0.36	0.79

EXPECTED PROGENY DIFFERENCES							ULTRASOUND EPDs			
	BW	WW	YW	MILK	TM	SC	REA	%IMF	RIB FAT	RUMP FAT
EPD	1.6	20	35	4	14	0.1	0.27	0	0.01	0.08
ACC	0.47	0.5	0.5	0.19	-	0.28	0.28	0.26	0.24	0.24

EXPECTED PROGENY DIFFERENCES							ULTRASOUND EPDs			
	BW	WW	YW	MILK	TM	SC	REA	%IMF	RIB FAT	RUMP FAT
EPD	-0.2	20	31	1	11	0.1	0.25	0.2	0.15	0.23
ACC	0.51	0.47	0.45	0.21	-	0.29	0.34	0.38	0.36	0.28

69 270X Pairs
CAINS MS BLOCKBUSTER 270X
Breeder: CAIN
DOB: 9/16/2010 BBUNo. C1003607
Sex: F
Color: RED MOT U/L
Horn: Polled

CALFINFORMATION
Type: NS
ID: 270A
BBU: C1024742
Sex: F
DOB: 4/5/2013
Color: RED MOT UL

70 076X Pairs
CAINS MS BLOCKBUSTER 076X
Breeder: CAIN
DOB: 9/23/2010 BBUNo. C1003612
Sex: F
Color: RED WHT U/L
Horn: Horns

CALFINFORMATION
Type: NS
ID: 076A
BBU: C1024748
Sex: F
DOB: 4/7/2013
Color: RED WHT UL

CJ'S SOUL MAN 168 RH C867835
CLARK JONES FARMS U 1/2 2/04 DNA US3000427 BT 7670A

BLOCKBUSTER 841 LE C923817
COTTAGE FARM DNA US3000518 PV BT BBU453

BOMB SHELL 396 LE C742387
COTTAGE FARM U 1/2 10/00 DNA 313359A BT 6758B

PEDIGREE OF CALF

BLOCKBUSTER 841 LE C923817

CAINS MS BLOCKBUSTER 270X 270X C1003607
CASEY

0-76 LH C836862
CASEY

**** INFINITY 120/96 LH C706197**
L TWO RANCH U 1/2 12/97 DNA 674A BT 5956A

501 LE C1008372
COTTAGE FARM DNA US9001082130 PV

**** OASIS 655 LE C828198**
COTTAGE FARM U 1/2 2/04 DNA 251620A BT 7628A

PEDIGREE OF CALF

BLOCKBUSTER 841 LE C923817
COTTAGE FARM DNA US3000518 PV BT BBU453

CAINS MS BLOCKBUSTER 076X 076X LH C1003612
CAIN

0-76 LH C836862
CASEY

INDIVIDUAL PERFORMANCE RECORDS								
	BW	WW	YW	SCROTAL	REA	%IMF	RIB FAT	RUMP FAT
RATIO	94	104	110		113	98	90	82
ADJ TRAIT	79	599	883		11.69	4.38	0.44	0.47

INDIVIDUAL PERFORMANCE RECORDS								
	BW	WW	YW	SCROTAL	REA	%IMF	RIB FAT	RUMP FAT
RATIO	96	96	100		108	76	65	100
ADJ TRAIT	78	553	806		11.17	3.39	0.32	0.57

EXPECTED PROGENY DIFFERENCES							ULTRASOUND EPDs			
	BW	WW	YW	MILK	TM	SC	REA	%IMF	RIB FAT	RUMP FAT
EPD	1.3	12	27	3	9	-0.1	0.42	0.2	0.12	0.11
ACC	0.48	0.45	0.45	0.17	-	0.24	0.39	0.44	0.39	0.44

EXPECTED PROGENY DIFFERENCES							ULTRASOUND EPDs			
	BW	WW	YW	MILK	TM	SC	REA	%IMF	RIB FAT	RUMP FAT
EPD	0.9	4	17	3	5	-0.4	0.31	0	0.05	0.18
ACC	0.48	0.47	0.47	0.17	-	0.26	0.38	0.42	0.31	0.42

71

814X

CAINS MS BLOCKBUSTER 814X

Pairs

Breeder: CAIN CATTLE CO.
 DOB: 9/26/2010 BBUNo. C999480
 Sex: F
 Color: RED WHT U/L
 Horn: Polled

CALFINFORMATION

Type: AI
 ID: 814A
 BBU: C1024652
 Sex: F
 DOB: 3/29/2013
 Color: RED

** INFINITY 120/96 LH C706197
 L TWO RANCH U 1/2 12/97 DNA 674A BT 5956A

501 LE C1008372

COTTAGE FARM DNA US9001082130 PV

** OASIS 655 LE C828198

COTTAGE FARM U 1/2 2/04 DNA 251620A BT 7628A

PEDIGREE OF CALF

BLOCKBUSTER 841 LE C923817

COTTAGE FARM DNA US3000518 PV BT BBU453

CAINS MS BLOCKBUSTER 814X 814X LH C999480

CAIN

814 814 LH C961103

CAIN

INDIVIDUAL PERFORMANCE RECORDS

	BW	WW	YW	SCROTAL	REA	%IMF	RIB FAT	RUMP FAT
RATIO	99		103		94	97	82	96
ADJ TRAIT	81		894		10.79	4	0.31	0.54

EXPECTED PROGENY DIFFERENCES

ULTRASOUND EPDs

	BW	WW	YW	MILK	TM	SC	REA	%IMF	RIB FAT	RUMP FAT
EPD	0.1	27	39	-3	11	0.6	0.21	0	-0.07	0.14
ACC	0.5	0.42	0.45	0.17	-	0.28	0.41	0.45	0.44	0.45

72

15X

CAINS MS 4-35 15X

Pairs

Breeder: CAIN CATTLE CO.
 DOB: 10/15/2010 BBUNo. C1004737
 Sex: F
 Color: RED
 Horn: Polled

CALFINFORMATION

Type: AI
 ID: 15A
 BBU: C1024647
 Sex: F
 DOB: 3/25/2013
 Color: RED

** INFINITY 120/96 LH C706197
 L TWO RANCH U 1/2 12/97 DNA 674A BT 5956A

501 LE C1008372

COTTAGE FARM DNA US9001082130 PV

** OASIS 655 LE C828198

COTTAGE FARM U 1/2 2/04 DNA 251620A BT 7628A

PEDIGREE OF CALF

4-35 LH C902794

CASEY U 4/06 DNA US3000538 BT 9004A

CAINS MS 4-35 15X 15X LH C1004737

CAIN

1/5 LH C926189

ADAIR DNA 582736A

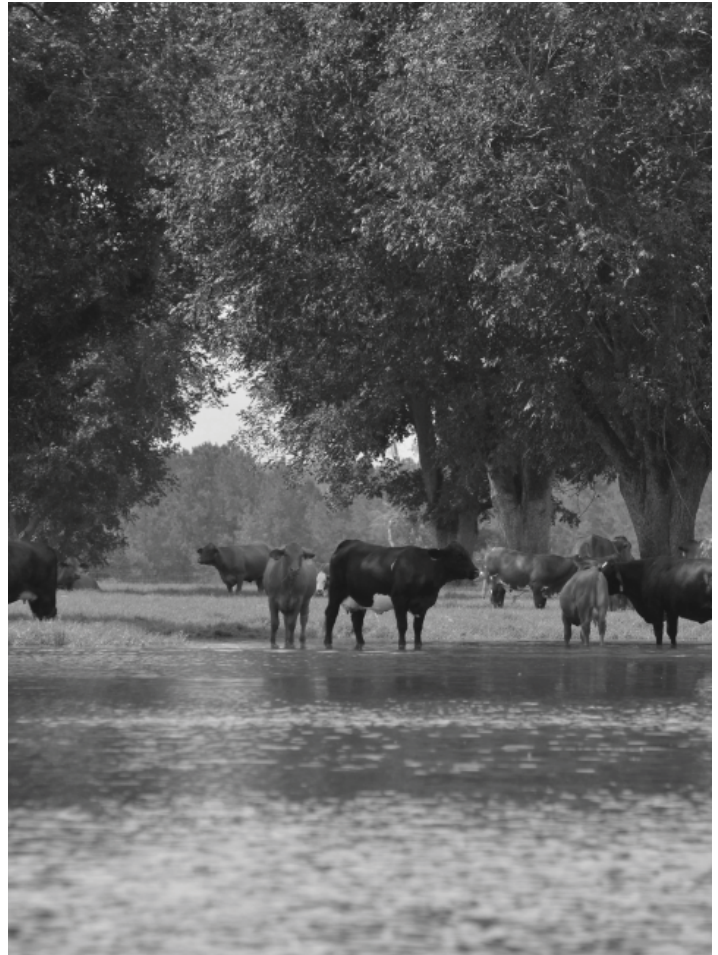
INDIVIDUAL PERFORMANCE RECORDS

	BW	WW	YW	SCROTAL	REA	%IMF	RIB FAT	RUMP FAT
RATIO	100	106	104		112	93	81	83
ADJ TRAIT	75	669	827		13.26	4.24	0.33	0.4

EXPECTED PROGENY DIFFERENCES

ULTRASOUND EPDs

	BW	WW	YW	MILK	TM	SC	REA	%IMF	RIB FAT	RUMP FAT
EPD	-0.1	7	16	5	9	0	0.4	0.1	-0.05	-0.03
ACC	0.48	0.44	0.44	0.14	-	0.28	0.34	0.38	0.34	0.38

**74**

12/1

Pairs

Breeder: SEEKER
 DOB: 3/8/2011 BBUNo. C1009480
 Sex: F
 Color: RED
 Horn: Polled

CALFINFORMATION

Type: AI
 ID: 121A
 BBU: C1024651
 Sex: M
 DOB: 3/13/2013
 Color: RED

** INFINITY 120/96 LH C706197
 L TWO RANCH U 1/2 12/97 DNA 674A BT 5956A

501 LE C1008372

COTTAGE FARM DNA US9001082130 PV

** OASIS 655 LE C828198

COTTAGE FARM U 1/2 2/04 DNA 251620A BT 7628A

PEDIGREE OF CALF

BULLET PROOF 864 LE C931489

COTTAGE FARM U 4/08 DNA US9000957935 PV

12/1 LH C1009480

SEEKER

CATHY 62K3 LE C826139

THE HOMESTEAD U 1/01 DNA 484A BT 8045A

INDIVIDUAL PERFORMANCE RECORDS

	BW	WW	YW	SCROTAL	REA	%IMF	RIB FAT	RUMP FAT
RATIO		101	94		84	113	65	97
ADJ TRAIT		584	979		9.13	4.17	0.16	0.43

EXPECTED PROGENY DIFFERENCES

ULTRASOUND EPDs

	BW	WW	YW	MILK	TM	SC	REA	%IMF	RIB FAT	RUMP FAT
EPD	0.7	13	10	1	7	0.3	-0.33	0	-0.09	-0.03
ACC	0.42	0.5	0.5	0.19	-	0.28	0.41	0.44	0.42	0.45

75

081Y2

Pairs

Breeder: CAIN CATTLE CO.
 DOB: 3/17/2011 BBUNo. C1011211
 Sex: F PV: SV (DNA)
 Color: RED WHT U/L
 Horn: Scurs
 DNA: US400045652

CALFINFORMATION

Type: AI
 ID: 081A
 BBU: C1024648
 Sex: F
 DOB: 3/20/2013
 Color: RED

**** INFINITY 120/96 LH C706197****L TWO RANCH U 1/2 12/97 DNA 674A BT 5956A****501 LE C1008372****COTTAGE FARM DNA US9001082130 PV****** OASIS 655 LE C828198****COTTAGE FARM U 1/2 2/04 DNA 251620A BT 7628A****PEDIGREE OF CALF****RELIANT 8178 BE C974366****CAIN DNA 605361A PV****081Y2 LH C1011211****CAIN DNA US400045652****CCC MISS CATALYST 3081W2 3081W2 LH C985594****CAIN**

INDIVIDUAL PERFORMANCE RECORDS

	BW	WW	YW	SCROTAL	REA	%IMF	RIB FAT	RUMP FAT
RATIO	91	108	105		102	117	135	128
ADJ TRAIT	90	686	956		12.42	4.47	0.51	0.8

EXPECTED PROGENY DIFFERENCES

ULTRASOUND EPDs

	BW	WW	YW	MILK	TM	SC	REA	%IMF	RIB FAT	RUMP FAT
EPD	1.7	14	28	2	9	0.1	0.22	0.2	0.03	0.15
ACC	0.47	0.45	0.45	0.14	-	0.24	0.39	0.41	0.26	0.23

77

2201

Bred Cows

Breeder: SPEAR RANCHES
 DOB: 10/15/2002 BBUNo. C872045
 Sex: F PV: SV (DNA)
 Color: RED M/FACE M/UL
 Horn: Polled
 DNA: 9000724113

AI: 11/15/2012 914 Dreamcatcher

EXP: 914 Dreamcatcher C977250 12/2/2012 To 1/12/2013

EXP: CF501 C1008372 1/12/2013 To 3/25/2013

SALSA 94-403 LH C587901**S M U 1/3 12/95 BT 5357A****9020 LH C798779****SPEAR RANCHES U 1/2 12/02 DNA 314158A BT 7545A****5130-2C LE S19005****SPEAR RANCHES U 12/03 BT 8055A****5109 LE C626292****SPEAR RANCHES***** 9086-2C LE S21174****SPEAR RANCHES****6025-1C LE F38557****SPEAR RANCHES**

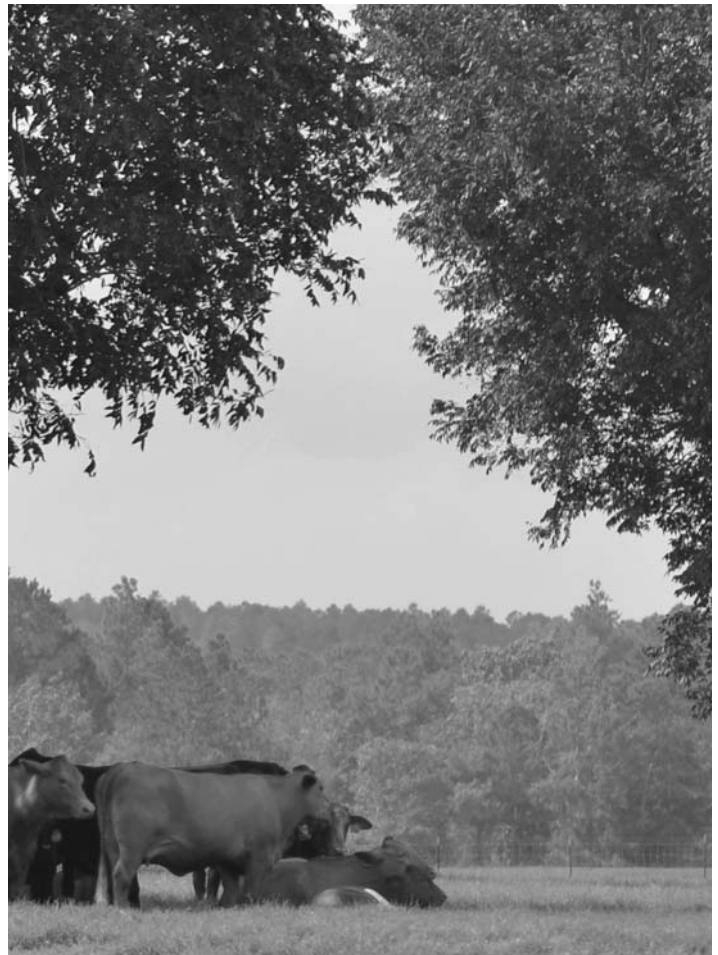
INDIVIDUAL PERFORMANCE RECORDS

	BW	WW	YW	SCROTAL	REA	%IMF	RIB FAT	RUMP FAT
RATIO	107	104	102					
ADJ TRAIT	77	590	838					

EXPECTED PROGENY DIFFERENCES

ULTRASOUND EPDs

	BW	WW	YW	MILK	TM	SC	REA	%IMF	RIB FAT	RUMP FAT
EPD	-1.9	15	20	6	13	0.1	0.06	0.1	0.06	0
ACC	0.63	0.59	0.58	0.41	-	0.36	0.31	0.26	0.26	0.24



2201



Proven superior producer. Find her production in the sale. You will be glad you did!

78

329

Bred Cows

Breeder: CAIN CATTLE CO.
 DOB: 9/16/2003 BBUNo. C889034
 Sex: F
 Color: BROWN STAR FACE
 Horn: Horns

DNA: 1115A BT: 9413A

AI: 11/15/2012 914 Dreamcatcher

EXP: 914 Dreamcatcher C977250 12/2/2012 To 1/12/2013

EXP: CF501 C1008372 1/12/2013 To 3/25/2013

537 LT C696529

CAIN

CATALYST 729 729 LT C775905

CAIN U 1/00 BT 7216A

610 LH C692462

LASATER U 1/2 8/98

OLE YELLER 5367 5367 LH C641922

LASATER BT 4289A

4120 LH C677173

FRENZEL DNA 1109A BT 7791B

111-1 RT C164194

L J BAR

INDIVIDUAL PERFORMANCE RECORDS

	BW	WW	YW	SCROTAL	REA	%IMF	RIB FAT	RUMP FAT
RATIO		114						
ADJ TRAIT		574						

EXPECTED PROGENY DIFFERENCES

	BW	WW	YW	MILK	TM	SC	REA	%IMF	RIB FAT	RUMP FAT
EPD	-0.2	19	25	10	20	0.3	-0.08	0.2	0.05	0.05
ACC	0.63	0.56	0.54	0.34	-	0.38	0.38	0.38	0.36	0.34

ULTRASOUND EPDs

	BW	WW	YW	MILK	TM	SC	REA	%IMF	RIB FAT	RUMP FAT
EPD	1.1	16	33	13	21	0.3	0.02	0.1	0.03	0.1
ACC	0.58	0.54	0.52	0.33	-	0.29	0.45	0.48	0.47	0.51

79

458

MISS CJ 458

Bred Cows

Breeder: CLARK JONES
 DOB: 11/20/2004 BBUNo. C925615
 Sex: F
 Color: BLACK
 Horn: Polled

DNA: 9000724112

AI: 11/15/2012 914 Dreamcatcher

EXP: 914 Dreamcatcher C977250 12/2/2012 To 1/12/2013

EXP: CF501 C1008372 1/12/2013 To 3/25/2013

721 LE C755781

CLARK JONES FARMS

CJ'S SOUL MAN 168 RH C867835

CLARK JONES FARMS U 1/2 2/04 DNA US3000427 BT 7670A

SOULMANS MOMMA 928 LE C799411

CLARK JONES FARMS U 11/00 BT 8016A

** SIR KIFFER 6/3 LH C548659

ADAIR U 1/2 1/95 BT 4906A

108/8 LH C751343

ADAIR U 1/3 8/04 DNA 506793A

** 108-0 LH C437888

COTTAGE FARM U 1/1 8/92 BT 4213A

INDIVIDUAL PERFORMANCE RECORDS

	BW	WW	YW	SCROTAL	REA	%IMF	RIB FAT	RUMP FAT
RATIO		100			100	100	100	100
ADJ TRAIT		757			7.24	3.34	0.28	0.46

EXPECTED PROGENY DIFFERENCES

	BW	WW	YW	MILK	TM	SC	REA	%IMF	RIB FAT	RUMP FAT
EPD	-0.2	1	8	0	1	0.1	0.04	0.3	0.11	0.14
ACC	0.47	0.44	0.42	0.36	-	0.38	0.34	0.34	0.34	0.34

ULTRASOUND EPDs

	BW	WW	YW	MILK	TM	SC	REA	%IMF	RIB FAT	RUMP FAT
EPD	1.1	16	33	13	21	0.3	0.02	0.1	0.03	0.1
ACC	0.58	0.54	0.52	0.33	-	0.29	0.45	0.48	0.47	0.51

80

537

Bred Cows

Breeder: CAIN CATTLE CO.
 DOB: 1/26/2005 BBUNo. C907145
 Sex: F
 Color: RED
 Horn:

AI: 11/15/2012 914 Dreamcatcher

EXP: 914 Dreamcatcher C977250 12/2/2012 To 1/12/2013

EXP: CF501 C1008372 1/12/2013 To 3/25/2013

537 LT C696529

CAIN

CATALYST 729 729 LT C775905

CAIN U 1/00 BT 7216A

610 LH C692462

LASATER U 1/2 8/98

MULTIPLE

0-73 LH C838651

CASEY

7-107 LH C757804

CASEY

INDIVIDUAL PERFORMANCE RECORDS

	BW	WW	YW	SCROTAL	REA	%IMF	RIB FAT	RUMP FAT
RATIO	99	111	112		111	103	113	126
ADJ TRAIT	70	613	915		12.19	3.53	0.29	0.52

EXPECTED PROGENY DIFFERENCES

	BW	WW	YW	MILK	TM	SC	REA	%IMF	RIB FAT	RUMP FAT
EPD	1.1	16	33	13	21	0.3	0.02	0.1	0.03	0.1
ACC	0.58	0.54	0.52	0.33	-	0.29	0.45	0.48	0.47	0.51

ULTRASOUND EPDs

	BW	WW	YW	MILK	TM	SC	REA	%IMF	RIB FAT	RUMP FAT
EPD	1.1	16	33	13	21	0.3	0.02	0.1	0.03	0.1
ACC	0.58	0.54	0.52	0.33	-	0.29	0.45	0.48	0.47	0.51

MISS CJ 458

Miss CJ 458 as you can see here is without question one of the best looking Soulman daughters you can find. In addition to the good looks here, add in her Polled characteristic and you have a real winning combination.

81 517 MISS CJ 517 Bred Cows

Breeder: CLARK JONES
 DOB: 2/3/2005 BBUNo. C917084
 Sex: F PV: PV (DNA)
 Color: BRINDLE
 Horn: Classified: U

DNA: 582735A
 AI: 11/15/2012 914 Dreamcatcher
 EXP: 914 Dreamcatcher C977250 12/2/2012 To 1/12/2013
 EXP: CF501 C1008372 1/12/2013 To 3/25/2013

721 LE C755781
 CLARK JONES FARMS
CJ'S SOUL MAN 168 RH C867835
 CLARK JONES FARMS U 1/2 2/04 DNA US3000427 BT 7670A
SOULMANS MOMMA 928 LE C799411
 CLARK JONES FARMS U 11/00 BT 8016A
 ** XCITE 497 LE C793242
 COTTAGE FARM U 1/2 10/00 DNA 247A BT 6760A
139/2 LH C873159
 WILMOTH & SONS U 1/3 8/05 DNA 607A BT 8806A
47/8 LH C783160
 WILMOTH & SONS U 1/3 8/01 BT 7236A

INDIVIDUAL PERFORMANCE RECORDS								
	BW	WW	YW	SCROTAL	REA	%IMF	RIB FAT	RUMP FAT
RATIO	102	102	93		100	112	117	109
ADJ TRAIT	66	611	746		10.72	5.81	0.41	0.61

EXPECTED PROGENY DIFFERENCES							ULTRASOUND EPDs			
	BW	WW	YW	MILK	TM	SC	REA	%IMF	RIB FAT	RUMP FAT
EPD	-0.2	-4	-4	-5	-6	-0.2	-0.03	0.3	0.09	0.21
ACC	0.55	0.47	0.45	0.38	-	0.33	0.38	0.38	0.34	0.36

82 5123 Bred Cows

Breeder: CAIN CATTLE CO.
 DOB: 3/5/2005 BBUNo. C907093
 Sex: F
 Color: RED
 Horn:

AI: 11/15/2012 914 Dreamcatcher
 EXP: 914 Dreamcatcher C977250 12/2/2012 To 1/12/2013
 EXP: CF501 C1008372 1/12/2013 To 3/25/2013

CATALYST 729 729 LT C775905
 CAIN U 1/00 BT 7216A
REACTION OF 956 729 253 BE C877311
 CAIN BT 7921A
956 LE C844397
 CAIN
 MULTIPLE
0-47 LH C836835
 CASEY
8-47 LH C788823
 CASEY

INDIVIDUAL PERFORMANCE RECORDS								
	BW	WW	YW	SCROTAL	REA	%IMF	RIB FAT	RUMP FAT
RATIO	103	112	109		84	59	78	106
ADJ TRAIT	67	619	888		9.27	2.02	0.2	0.44

EXPECTED PROGENY DIFFERENCES							ULTRASOUND EPDs			
	BW	WW	YW	MILK	TM	SC	REA	%IMF	RIB FAT	RUMP FAT
EPD	1	22	34	14	25	0.3	-0.13	-0.2	-0.18	-0.12
ACC	0.58	0.55	0.54	0.33	-	0.33	0.41	0.45	0.44	0.45

MISS CJ 517



We think Miss CJ 517 is about as good visually as any of our females. Plus her production has been knock out of the park great. Combining Soulman and Xcite was planned, and we are glad the plan was set in motion.

83 1/5 Bred Cows

Breeder: ADAIR
 DOB: 3/13/2005 BBUNo. C926189
 Sex: F PV: SV (DNA)
 Color: RED
 Horn:

DNA: 582736A
 AI: 11/15/2012 914 Dreamcatcher
 EXP: 914 Dreamcatcher C977250 12/2/2012 To 1/12/2013
 EXP: CF501 C1008372 1/12/2013 To 3/25/2013

721 LE C755781
 CLARK JONES FARMS
CJ'S SOUL MAN 168 RH C867835
 CLARK JONES FARMS U 1/2 2/04 DNA US3000427 BT 7670A
SOULMANS MOMMA 928 LE C799411
 CLARK JONES FARMS U 11/00 BT 8016A
 *** KING COTTON 179 LS C257482
 SCHUTTS U 5/86 DNA 166403A BT 2560C
ESPECIALY MAID 40/6 LH C710741
 MATHESON BT 6687A
 ** 411/6 LE C289528
 DOUBLE J J U 1/2 12/93 BT 3832A

INDIVIDUAL PERFORMANCE RECORDS								
	BW	WW	YW	SCROTAL	REA	%IMF	RIB FAT	RUMP FAT
RATIO	100	100			100	100	100	100
ADJ TRAIT	634	754			9.5	3.6	0.2	0.24

EXPECTED PROGENY DIFFERENCES							ULTRASOUND EPDs			
	BW	WW	YW	MILK	TM	SC	REA	%IMF	RIB FAT	RUMP FAT
EPD	2.4	10	20	3	8	0.1	0	0.2	-0.01	-0.02
ACC	0.59	0.62	0.62	0.42	-	0.41	0.55	0.56	0.54	0.56

84

530

MISS CJ 530

Bred Cows

Breeder: CLARK JONES
 DOB: 4/14/2005 BBUNo. C917053
 Sex: F PV: PV (DNA)
 Color: BLACK
 Horn: Classified: U

DNA: 9000724114

AI: 11/15/2012 914 Dreamcatcher

EXP: 914 Dreamcatcher C977250 12/2/2012 To 1/12/2013

EXP: CF501 C1008372 1/12/2013 To 3/25/2013

721 LE C755781

CLARK JONES FARMS

CJ'S SOUL MAN 168 RH C867835

CLARK JONES FARMS U 1/2 2/04 DNA US3000427 BT 7670A

SOULMANS MOMMA 928 LE C799411

CLARK JONES FARMS U 11/00 BT 8016A

** SYNERGY 84/95 LH C615710

L TWO CATTLE U 1/2 1/97 DNA 183A BT 5779A

MAXINE 15-0 RH C823797

D T RANCH U 1/2 8/04 DNA 1022A BT 9343A

MISS MAX 7496 LE C709475

MAXWELL RANCH U 1/2 11/98 BT 6427D

INDIVIDUAL PERFORMANCE RECORDS

	BW	WW	YW	SCROTAL	REA	%IMF	RIB FAT	RUMP FAT
RATIO	100	96	100		100	100	100	100
ADJ TRAIT	65	446	837		9.38	3.87	0.38	0.68

EXPECTED PROGENY DIFFERENCES

ULTRASOUND EPDs

	BW	WW	YW	MILK	TM	SC	REA	%IMF	RIB FAT	RUMP FAT
EPD	1.3	7	16	-1	2	0	0.05	0.2	0.05	0.05
ACC	0.54	0.5	0.45	0.38	-	0.34	0.33	0.33	0.33	0.29

85

550

Bred Cows

Breeder: CLARK JONES FARMS
 DOB: 6/28/2005 BBUNo. C912923
 Sex: F PV:
 Color: BLACK
 Horn: Classified: U

DNA: 9000724116

AI: 11/15/2012 914 Dreamcatcher

EXP: 914 Dreamcatcher C977250 12/2/2012 To 1/12/2013

EXP: CF501 C1008372 1/12/2013 To 3/25/2013

721 LE C755781

CLARK JONES FARMS

CJ'S SOUL MAN 168 RH C867835

CLARK JONES FARMS U 1/2 2/04 DNA US3000427 BT 7670A

SOULMANS MOMMA 928 LE C799411

CLARK JONES FARMS U 11/00 BT 8016A

** HAVANA 485 LT C609842

CAIN U 1/2 9/95 BT 5367A

0-094 LH C884392

DUNKIN FARMS U 1/2 3/07 DNA 353335A BT BBU399

GLAD TIGER 6-082 LH C716692

DUNKIN FARMS U 1/2 7/98 BT 6936A

INDIVIDUAL PERFORMANCE RECORDS

	BW	WW	YW	SCROTAL	REA	%IMF	RIB FAT	RUMP FAT
RATIO	100							
ADJ TRAIT	68							

EXPECTED PROGENY DIFFERENCES

ULTRASOUND EPDs

	BW	WW	YW	MILK	TM	SC	REA	%IMF	RIB FAT	RUMP FAT
EPD	0.7	-1	8	-1	-2	-0.2	0.21	0.1	0.02	0.03
ACC	0.51	0.48	0.45	0.38	-	0.36	0.34	0.36	0.34	0.34

MISS CJ 530



Combining Soul Man and Synergy worked here again for sure. She expresses a great amount of length along with other top maternal characteristics. Miss CJ 530 is making a solid contribution to our program here at Cain Cattle Company.

86

897

Bred Cows

Breeder: COTTAGE FARM
 DOB: 9/1/2005 BBUNo. C923811
 Sex: F PV:
 Color: BLACK
 Horn:

DNA: 343883A

BT: BBU343

AI: 11/15/2012 914 Dreamcatcher

EXP: 914 Dreamcatcher C977250 12/2/2012 To 1/12/2013

EXP: CF501 C1008372 1/12/2013 To 3/25/2013

721 LE C755781

CLARK JONES FARMS

CJ'S SOUL MAN 168 RH C867835

CLARK JONES FARMS U 1/2 2/04 DNA US3000427 BT 7670A

SOULMANS MOMMA 928 LE C799411

CLARK JONES FARMS U 11/00 BT 8016A

** CJ'S DESPERADO 530 RH C631430

CLARK JONES FARMS U 1/3 11/96 DNA 16C BT 5760A

SEX GODESS 398 LE C773489

COTTAGE FARM U 1/2 7/03 BT 6954B

** SEX APPEAL 062/0 LH C453999

ADAIR U 1/2 4/92 BT 4709A

INDIVIDUAL PERFORMANCE RECORDS

	BW	WW	YW	SCROTAL	REA	%IMF	RIB FAT	RUMP FAT
RATIO								
ADJ TRAIT								

EXPECTED PROGENY DIFFERENCES

ULTRASOUND EPDs

	BW	WW	YW	MILK	TM	SC	REA	%IMF	RIB FAT	RUMP FAT
EPD	0.9	-4	-11	-4	-6	-0.3	-0.32	0.2	-0.05	0.03
ACC	0.59	0.56	0.56	0.41	-	0.47	0.47	0.5	0.47	0.45

87 21/6 Bred Cows

Breeder: HILL'S H & H
 DOB: 2/10/2006 BBUNo. C927108
 Sex: F
 Color: RED
 Horn: Classified: U

AI: 11/15/2012 914 Dreamcatcher
 EXP: 914 Dreamcatcher C977250 12/2/2012 To 1/12/2013
 EXP: CF501 C1008372 1/12/2013 To 3/25/2013

**** SPARTACUS 86/653 RH C317158**
DAVID C BROWN BEEFMA U 1/3 5/93 DNA 9A BT 3116A
 011 RE C864074
 ISLAND FARM
 VANNA 2 76/98 LH C75585
 L TWO RANCH U 1/2 10/00 DNA 313361A BT 7183B
 ** RED TIGER 9075 LH C429021
 TURNER CREST U 1/3 10/93 DNA 367A BT 4401B
 8285 LH C876704
 NELAZ RANCH U 1/3 5/04
 ** 17/2 LH C491257
 CHUCK HOWLEY U 1/3 4/97 BT 5572B

INDIVIDUAL PERFORMANCE RECORDS								
	BW	WW	YW	SCROTAL	REA	%IMF	RIB FAT	RUMP FAT
RATIO								
ADJ TRAIT								

EXPECTED PROGENY DIFFERENCES					ULTRASOUND EPDs					
	BW	WW	YW	MILK	TM	SC	REA	%IMF	RIB FAT	RUMP FAT
EPD	1.6	7	11	0	3	0	-0.07	-0.3	-0.14	0.05
ACC	0.31	0.36	0.38	0.23	-	0.19	0.31	0.34	0.33	0.33

89 8893 Bred Cows

Breeder: CAIN CATTLE CO.
 DOB: 4/30/2008 BBUNo. C981504
 Sex: F
 Color: RED
 Horn: Horns

AI: 11/15/2012 914 Dreamcatcher
 EXP: 914 Dreamcatcher C977250 12/2/2012 To 1/12/2013
 EXP: CF501 C1008372 1/12/2013 To 3/25/2013

**** L BAR 5502 5502 LH C663482**
L BAR U 1/2 4/98 DNA 056071A BT 6208A
 DOC 2D-0C81 LE C893778
 CHANNAROCK FARM U 1/2 8/04 DNA 308374A
 PHALLON 512/7 LE C762020
 CHANNAROCK FARM U 9/99
 CJ'S SOUL MAN 168 RH C867835
 CLARK JONES FARMS U 1/2 2/04 DNA US3000427 BT 7670A
 MISS C J 516 516 RH C917093
 CLARK JONES FARMS U 5/06 DNA 492776A
 MISS CJ 250 250 LE C876309
 CLARK JONES FARMS U 1/1 5/06

INDIVIDUAL PERFORMANCE RECORDS								
	BW	WW	YW	SCROTAL	REA	%IMF	RIB FAT	RUMP FAT
RATIO	100	100						
ADJ TRAIT	69	509						

EXPECTED PROGENY DIFFERENCES					ULTRASOUND EPDs					
	BW	WW	YW	MILK	TM	SC	REA	%IMF	RIB FAT	RUMP FAT
EPD	-2.2	25	39	-10	3	1	0.26	0.2	0.01	0.18
ACC	0.52	0.41	0.39	0.29	-	0.31	PE	PE	PE	PE

88 7028 Bred Cows

Breeder: WINDY HILLS
 DOB: 11/10/2006 BBUNo. C942743
 Sex: F
 Color: BLACK
 Horn:

AI: 11/15/2012 914 Dreamcatcher
 EXP: 914 Dreamcatcher C977250 12/2/2012 To 1/12/2013
 EXP: CF501 C1008372 1/12/2013 To 3/25/2013

721 LE C755781
CLARK JONES FARMS
 CJ'S SOUL MAN 168 RH C867835
 CLARK JONES FARMS U 1/2 2/04 DNA US3000427 BT 7670A
 SOULMANS MOMMA 928 LE C799411
 CLARK JONES FARMS U 11/00 BT 8016A
 ** RED TIGER 9075 LH C429021
 TURNER CREST U 1/3 10/93 DNA 367A BT 4401B
 9001 LH C876697
 NELAZ RANCH DNA 375A BT 8449A
 JOY 24/95 LH C617091
 L TWO CATTLE U 1/2 4/97 BT 6040D

INDIVIDUAL PERFORMANCE RECORDS								
	BW	WW	YW	SCROTAL	REA	%IMF	RIB FAT	RUMP FAT
RATIO	102							
ADJ TRAIT	74							

EXPECTED PROGENY DIFFERENCES					ULTRASOUND EPDs					
	BW	WW	YW	MILK	TM	SC	REA	%IMF	RIB FAT	RUMP FAT
EPD	0	2	9	0	1	0	0.18	0.1	0.02	-0.01
ACC	0.41	0.41	0.39	0.33	-	0.31	PE	PE	PE	PE

90 8945 Bred Cows

Breeder: CAIN CATTLE CO.
 DOB: 9/2/2008 BBUNo. C986826
 Sex: F
 Color: BLACK WHT U/L
 Horn: Polled
 DNA: 555369A

AI: 11/15/2012 914 Dreamcatcher
 EXP: 914 Dreamcatcher C977250 12/2/2012 To 1/12/2013
 EXP: CF501 C1008372 1/12/2013 To 3/25/2013

**** POLLED MANDATE 404/5 LE C705841**
CHANNAROCK FARM U 1/2 4/98 BT 6226A
 BLACK BAYOU 1071/3 LE C892444
 CHANNAROCK FARM U 1/2 5/06 DNA US3000542 BT 8891A
 ** 2C46/8 LH S9887
 MULLINS U 3/3 6/91
 CJ'S SOUL MAN 168 RH C867835
 CLARK JONES FARMS U 1/2 2/04 DNA US3000427 BT 7670A
 1/5 LH C926189
 ADAIR DNA 582736A
 ESPECIALY MAID 40/6 LH C710741
 MATHESON BT 6687A

INDIVIDUAL PERFORMANCE RECORDS								
	BW	WW	YW	SCROTAL	REA	%IMF	RIB FAT	RUMP FAT
RATIO	80	101	112		101	97	170	125
ADJ TRAIT	69	467	788		9.73	2.56	0.45	0.49

EXPECTED PROGENY DIFFERENCES					ULTRASOUND EPDs					
	BW	WW	YW	MILK	TM	SC	REA	%IMF	RIB FAT	RUMP FAT
EPD	3.2	22	35	5	16	0.4	0.3	0.1	0.03	0.18
ACC	0.54	0.55	0.54	0.34	-	0.39	0.48	0.51	0.44	0.54

91 40/08 MELISSA Bred Cows

Breeder: BOUNDS SWINGING B RANCH
 DOB: 11/26/2008 BBUNo. C984874
 Sex: F
 Color: BLACK
 Horn:

AI: 11/15/2012 914 Dreamcatcher
 EXP: 914 Dreamcatcher C977250 12/2/2012 To 1/12/2013
 EXP: CF501 C1008372 1/12/2013 To 3/25/2013

CJ'S SOUL MAN 168 RH C867835
 CLARK JONES FARMS U 1/2 2/04 DNA US3000427 BT 7670A

THE ANSWER 514 LE C925789
 SCHELL RANCH U 2/07 DNA 778A BT 9026A

MISS STACI 927 LE C780836
 CLARK JONES FARMS U 1/1 4/02 DNA 39A BT 6981A

**** BLACK JACK 21 LE C817059**
 SCHELL RANCH U 1/2 4/02 DNA 40A BT 7093A

STACI ANN 421 LE C908095
 SCHELL RANCH U 3/06 DNA 496A BT 8622A

MISS STACI 927 LE C780836
 CLARK JONES FARMS U 1/1 4/02 DNA 39A BT 6981A

INDIVIDUAL PERFORMANCE RECORDS								
	BW	WW	YW	SCROTAL	REA	%IMF	RIB FAT	RUMP FAT
RATIO			100		100	100	100	100
ADJ TRAIT			869		10.34	4.39	0.26	0.53

EXPECTED PROGENY DIFFERENCES							ULTRASOUND EPDs			
	BW	WW	YW	MILK	TM	SC	REA	%IMF	RIB FAT	RUMP FAT
EPD	0.4	3	8	2	4	-0.1	-0.1	0	-0.04	0.07
ACC	0.33	0.33	0.31	0.24	-	0.21	0.26	0.28	0.28	0.29

93 9026 CCC MISS MS 9026 Bred Cows

Breeder: CAIN CATTLE CO.
 DOB: 3/17/2009 BBUNo. C985589
 Sex: F
 Color: RED BRINDLE STAR FACE
 Horn: Polled
 DNA: 604113A

AI: 11/15/2012 914 Dreamcatcher
 EXP: 914 Dreamcatcher C977250 12/2/2012 To 1/12/2013
 EXP: CF501 C1008372 1/12/2013 To 3/25/2013

CJ'S SOUL MAN 168 RH C867835
 CLARK JONES FARMS U 1/2 2/04 DNA US3000427 BT 7670A

BLOCKBUSTER 841 LE C923817
 COTTAGE FARM DNA US3000518 PV BT BBU453

BOMB SHELL 396 LE C742387
 COTTAGE FARM U 1/2 10/00 DNA 313359A BT 6758B

CJ'S SOUL MAN 168 RH C867835
 CLARK JONES FARMS U 1/2 2/04 DNA US3000427 BT 7670A

MISS CJ 517 517 RH C917084
 CLARK JONES U 5/06 DNA 582735A PV

139/2 LH C873159
 WILMOTH & SONS U 1/3 8/05 DNA 607A BT 8806A

INDIVIDUAL PERFORMANCE RECORDS								
	BW	WW	YW	SCROTAL	REA	%IMF	RIB FAT	RUMP FAT
RATIO	107	87	89		102	95	98	
ADJ TRAIT	72	469	736		11.2	3.7	0.36	

EXPECTED PROGENY DIFFERENCES							ULTRASOUND EPDs			
	BW	WW	YW	MILK	TM	SC	REA	%IMF	RIB FAT	RUMP FAT
EPD	0.7	1	9	-5	-4	-0.4	0.26	0.2	0.1	0.27
ACC	0.56	0.54	0.52	0.26	-	0.33	0.45	0.5	0.48	0.36

92 L2 83/09 SIMPLY SUE Bred Cows

Breeder: L TWO RANCH
 DOB: 2/2/2009 BBUNo. C981631
 Sex: F
 Color: RED
 Horn: Horns
 DNA: MMI085499

AI: 11/15/2012 914 Dreamcatcher
 EXP: 914 Dreamcatcher C977250 12/2/2012 To 1/12/2013
 EXP: CF501 C1008372 1/12/2013 To 3/25/2013

L2 CAPTAIN LUCEY 116/01 LH C844030
 L TWO RANCH U 1/2 10/06 DNA 133A BT 7402A

L2 CAPTAIN JACK 43/07 LH C947413
 L TWO RANCH U 1/2 2/09 DNA US4039456 PV

**** FARRAH ANNA 42/9 LE C828396**
 T - BOB U 1/2 12/07 DNA 120A BT 7411A

**** SPARTACUS 86/653 RH C317158**
 DAVID C BROWN BEEFMA U 1/3 5/93 DNA 9A BT 3116A

PEGGY SUE 20/06 LH C929046
 L TWO RANCH U 1/2 12/07 DNA 314078A PV BT BBU214

**** INFINITE LADY 79/98 LH C763893**
 L TWO CATTLE U 1/2 3/02 DNA 131A BT 7614A

INDIVIDUAL PERFORMANCE RECORDS								
	BW	WW	YW	SCROTAL	REA	%IMF	RIB FAT	RUMP FAT
RATIO	100	100	100					
ADJ TRAIT	64	675	938					

EXPECTED PROGENY DIFFERENCES							ULTRASOUND EPDs			
	BW	WW	YW	MILK	TM	SC	REA	%IMF	RIB FAT	RUMP FAT
EPD	0.9	14	21	-2	6	0.2				
ACC	0.44	0.41	0.41	0.21	-	0.29				

94 6/9 Bred Cows

Breeder: SEEKER
 DOB: 4/2/2009 BBUNo. C986058
 Sex: F
 Color: RED
 Horn: Polled

AI: 11/15/2012 914 Dreamcatcher
 EXP: 914 Dreamcatcher C977250 12/2/2012 To 1/12/2013
 EXP: CF501 C1008372 1/12/2013 To 3/25/2013

CJ'S BANDELERO 960 RH C809701
 CLARK JONES FARMS U 1/3 2/02 DNA 100A BT 7189A

BULLET PROOF 864 LE C931489
 COTTAGE FARM U 4/08 DNA US9000957935 PV

**** OASIS 655 LE C828198**
 COTTAGE FARM U 1/2 2/04 DNA 251620A BT 7628A

**** BLACK JACK 21 LE C817059**
 SCHELL RANCH U 1/2 4/02 DNA 40A BT 7093A

MISS CHOCOLATE MINT 9/4 LH C914302
 SEEKER

TIGER QUEEN 200 LE C759737
 TRENT CROMER BT 6410A

INDIVIDUAL PERFORMANCE RECORDS								
	BW	WW	YW	SCROTAL	REA	%IMF	RIB FAT	RUMP FAT
RATIO	93	112	103		112	121	91	94
ADJ TRAIT	74	617	850		10.66	4.67	0.24	0.42

EXPECTED PROGENY DIFFERENCES							ULTRASOUND EPDs			
	BW	WW	YW	MILK	TM	SC	REA	%IMF	RIB FAT	RUMP FAT
EPD	1.3	15	19	1	9	0.5	0.05	0.1	-0.06	0.05
ACC	0.52	0.51	0.5	0.26	-	0.31	0.41	0.45	0.42	0.45

95 9117 PIPPA Bred Cows

Breeder: CLARK JONES
 DOB: 11/24/2009 BBUNo. C994456
 Sex: F PV: SV (DNA)
 Color: RED
 Horn: Polled

DNA: US9001082128
 AI: 11/15/2012 914 Dreamcatcher
 EXP: 914 Dreamcatcher C977250 12/2/2012 To 1/12/2013
 EXP: CF501 C1008372 1/12/2013 To 3/25/2013

**** RED SUGAR 104/93 LH C529759**
 L TWO RANCH U 1/2 11/94 DNA 184A BT 4550F

**** INFINITY 120/96 LH C706197**
 L TWO RANCH U 1/2 12/97 DNA 674A BT 5956A

**** VANNA 5660 LH C273206**
 THOMPSON BROTHERS U 1/2 6/91 BT 2933C

**** XCITE 497 LE C793242**
 COTTAGE FARM U 1/2 10/00 DNA 247A BT 6760A

MISS CJ 011-08 011-08 LE C994074
 CLARK JONES

MISS SUPERIOR 8 LE C810409
 HARRISON & KENAMORE U 1/2 8/04 DNA 213A BT 8205A

INDIVIDUAL PERFORMANCE RECORDS								
	BW	WW	YW	SCROTAL	REA	%IMF	RIB FAT	RUMP FAT
RATIO	95	121	112		120	129	117	138
ADJ TRAIT	78	685	880		10.24	4.65	0.22	0.37

EXPECTED PROGENY DIFFERENCES							ULTRASOUND EPDs			
	BW	WW	YW	MILK	TM	SC	REA	%IMF	RIB FAT	RUMP FAT
EPD	1.4	16	21	1	9	0.3	0.08	0.3	0.13	0.21
ACC	0.52	0.5	0.5	0.31	-	0.34	0.44	0.47	0.47	0.48

96 223/0 CF 223/0 Bred Cows

Breeder: COLLIER FARMS
 DOB: 1/5/2010 BBUNo. C997107
 Sex: F
 Color: RED WHT U/L
 Horn: Horns

AI: 11/15/2012 914 Dreamcatcher
 EXP: 914 Dreamcatcher C977250 12/2/2012 To 1/12/2013
 EXP: CF501 C1008372 1/12/2013 To 3/25/2013

QUASAR 991 LE C811785
 HARROD FARMS U 1/02 DNA 26B BT 7176A

**** LOGAN 62M27 LE C883222**
 THE HOMESTEAD U 1/2 1/06 DNA 322220A BT 7960A

JEZABELLE 62J8 LE C801257
 THE HOMESTEAD U 2/00 DNA 371399A BT 6925A

7128 LE C696705
 LA MEJOR CATTLE CO. U 1/99

464/1 LH C853348
 COLLIER FARMS

**** 93/8 LE C781992**
 COLLIER FARMS U 4/99

INDIVIDUAL PERFORMANCE RECORDS								
	BW	WW	YW	SCROTAL	REA	%IMF	RIB FAT	RUMP FAT
RATIO	85	109	112		116	123	117	102
ADJ TRAIT	89	634	853		10.48	4.85	0.3	0.47

EXPECTED PROGENY DIFFERENCES							ULTRASOUND EPDs			
	BW	WW	YW	MILK	TM	SC	REA	%IMF	RIB FAT	RUMP FAT
EPD	2.8	15	26	-1	7	0.4	0.11	0.2	0.13	0.24
ACC	0.52	0.51	0.5	0.28	-	0.29	0.39	0.42	0.41	0.44

9117 PIPPA



Pippa is a rare individual for sure. She combines the top of the breed genetic heritage, a knock out gorgeous phenotype, while offering her non visual strength in complete performance that would be at the top of any herd in the breed. We have great plans for Pippa and she will definitely be one to watch we think for years to come here at Cain Cattle Company.

97 17/10 Bred Cows

Breeder: MORAN
 DOB: 2/2/2010 BBUNo. C994811
 Sex: F
 Color: LIGHT RED MOT U/L
 Horn:

AI: 11/15/2012 914 Dreamcatcher
 EXP: 914 Dreamcatcher C977250 12/2/2012 To 1/12/2013
 EXP: CF501 C1008372 1/12/2013 To 3/25/2013

**** INFINITY 120/96 LH C706197**
 L TWO RANCH U 1/2 12/97 DNA 674A BT 5956A

L2 RED HAWK 91/01 LH C843994
 L TWO RANCH U 3/02 BT 7524C

**** MILK & HONEY 45/98 LH C763541**
 L TWO RANCH U 1/2 12/00 DNA 112A BT 6614B

WACO 62M15 LE C883014
 THE HOMESTEAD U 1/2 2/05 DNA 313362A BT 7961A

HMST 3033S 3033S LE C937713
 THE HOMESTEAD

LADY OF ART 763 LE C759568
 HARROD FARMS U 12/99 BT 6545C

INDIVIDUAL PERFORMANCE RECORDS								
	BW	WW	YW	SCROTAL	REA	%IMF	RIB FAT	RUMP FAT
RATIO	92	100			105	111	158	130
ADJ TRAIT	542	841			9.35	4.54	0.49	0.6

EXPECTED PROGENY DIFFERENCES							ULTRASOUND EPDs			
	BW	WW	YW	MILK	TM	SC	REA	%IMF	RIB FAT	RUMP FAT
EPD	0.9	6	17	3	6	0	0.02	0.2	0.15	0.14
ACC	0.38	0.51	0.5	0.24	-	0.29	0.39	0.42	0.31	0.45

98 800X CAINS MIS DOC8020 Bred Cows

Breeder: CAIN CATTLE CO.
 DOB: 2/27/2010 BBUNo. C996167
 Sex: F
 Color: RED STAR FACE
 Horn: Polled

AI: 11/15/2012 914 Dreamcatcher
 EXP: 914 Dreamcatcher C977250 12/2/2012 To 1/12/2013
 EXP: CF501 C1008372 1/12/2013 To 3/25/2013

DOC 2D-0C81 LE C893778
 CHANNAROCK FARM U 1/2 8/04 DNA 308374A

8020 8020 LH C961539
 CAIN DNA 508664A

2-23 LH C876589
 CASEY

PUFF DADDY 524 RH C917086
 CLARK JONES DNA US3000522 PV BT BBU380

800 800 LH C961097
 CAIN

660 660 BE C931413
 CAIN

INDIVIDUAL PERFORMANCE RECORDS								
	BW	WW	YW	SCROTAL	REA	%IMF	RIB FAT	RUMP FAT
RATIO	100	108	103		102	87	43	68
ADJ TRAIT	74	656	907		11.44	3.26	0.14	0.37

EXPECTED PROGENY DIFFERENCES							ULTRASOUND EPDs			
	BW	WW	YW	MILK	TM	SC	REA	%IMF	RIB FAT	RUMP FAT
EPD	0.7	35	47	1	19	1	0.43	-0.1	-0.08	-0.13
ACC	0.48	0.42	0.44	0.1	-	0.19	0.38	0.41	0.29	0.44

100 882Y Bred Heifers

Breeder: CAIN CATTLE CO.
 DOB: 2/17/2011 BBUNo. C1011210
 Sex: F
 Color: RED WHT U/L
 Horn: Polled

AI: 11/15/2012 914 Dreamcatcher
 EXP: 914 Dreamcatcher C977250 12/2/2012 To 1/12/2013
 EXP: CF501 C1008372 1/12/2013 To 3/25/2013

CJ'S SOUL MAN 168 RH C867835
 CLARK JONES FARMS U 1/2 2/04 DNA US3000427 BT 7670A

BLOCKBUSTER 841 LE C923817
 COTTAGE FARM DNA US3000518 PV BT BBU453

BOMB SHELL 396 LE C742387
 COTTAGE FARM U 1/2 10/00 DNA 313359A BT 6758B

DOC 2D-0C81 LE C893778
 CHANNAROCK FARM U 1/2 8/04 DNA 308374A

882 882 LH C961129
 CAIN

3-44 LH C898825
 CASEY

INDIVIDUAL PERFORMANCE RECORDS								
	BW	WW	YW	SCROTAL	REA	%IMF	RIB FAT	RUMP FAT
RATIO	101	99	100		93	105	92	88
ADJ TRAIT	77	627	914		11.26	4	0.35	0.55

EXPECTED PROGENY DIFFERENCES							ULTRASOUND EPDs			
	BW	WW	YW	MILK	TM	SC	REA	%IMF	RIB FAT	RUMP FAT
EPD	-0.1	23	36	-5	7	0.5	0.18	0	-0.03	0.1
ACC	0.48	0.48	0.48	0.17	-	0.28	0.42	0.47	0.45	0.48

99 860 FRENZEL 0860 Bred Heifers

Breeder: FRENZEL
 DOB: 11/2/2010 BBUNo. C1015919
 Sex: F
 Color: RED WHT U/L
 Horn: Horns

AI: 11/15/2012 914 Dreamcatcher
 EXP: 914 Dreamcatcher C977250 12/2/2012 To 1/12/2013
 EXP: CF501 C1008372 1/12/2013 To 3/25/2013

4248 RE C919125
 LASATER U 4/07 DNA 998A BT 9312A

8120 LH C967433
 FRENZEL DNA US3000950

6119 LH C934688
 FRENZEL

** CLASSIC COTTON 89/135 LH C380077
 MONTGOMERY PROPRTIE U 1/3 10/91 DNA 339125A BT 3640A

969-7 LH C952347
 HILLTOP RANCH U 3/08

9-057 LH C791653
 DUNKIN FARMS U 3/03 DNA 337457A BT 6852A

INDIVIDUAL PERFORMANCE RECORDS								
	BW	WW	YW	SCROTAL	REA	%IMF	RIB FAT	RUMP FAT
RATIO	100	96	100		100	100	100	100
ADJ TRAIT	74	562	567		10.51	3.29	0.16	0.26

EXPECTED PROGENY DIFFERENCES							ULTRASOUND EPDs			
	BW	WW	YW	MILK	TM	SC	REA	%IMF	RIB FAT	RUMP FAT
EPD	-0.9	11	15	1	7	0.4	0.22	0	0	-0.02
ACC	0.47	0.45	0.39	0.15	-	0.28	0.23	0.24	0.23	0.24

101 907Y Bred Heifers

Breeder: CAIN CATTLE CO.
 DOB: 2/27/2011 BBUNo. C1011219
 Sex: F
 Color: RED WHITE FACE
 Horn: Polled

DNA: US400045653
 AI: 11/15/2012 914 Dreamcatcher
 EXP: 914 Dreamcatcher C977250 12/2/2012 To 1/12/2013
 EXP: CF501 C1008372 1/12/2013 To 3/25/2013

BLOCKBUSTER 841 LE C923817
 COTTAGE FARM DNA US3000518 PV BT BBU453

RELIANT 8178 BE C974366
 CAIN DNA 605361A PV

550 LE C912923
 CLARK JONES FARMS U 5/06 DNA 9000724116 PV

BLACK BAYOU 1071/3 LE C892444
 CHANNAROCK FARM U 1/2 5/06 DNA US3000542 BT 8891A

CCC MISS BLK BAYOU 8907 8907 LH C986821
 CAIN DNA 555354A

0-35 LH C836823
 CASEY DNA 582733A

INDIVIDUAL PERFORMANCE RECORDS								
	BW	WW	YW	SCROTAL	REA	%IMF	RIB FAT	RUMP FAT
RATIO	96	113	108		117	85	100	80
ADJ TRAIT	86	720	986		14.18	3.23	0.38	0.5

EXPECTED PROGENY DIFFERENCES							ULTRASOUND EPDs			
	BW	WW	YW	MILK	TM	SC	REA	%IMF	RIB FAT	RUMP FAT
EPD	1.7	21	35	2	13	0.3	0.57	0	-0.02	-0.03
ACC	0.45	0.44	0.44	0.12	-	0.23	0.38	0.42	0.39	0.44

102 081Y4 Bred Heifers

Breeder: CAIN CATTLE CO.
 DOB: 3/20/2011 BBUNo. C1011213
 Sex: F
 Color: BLACK WHT U/L
 Horn: Polled

AI: 11/15/2012 914 Dreamcatcher
 EXP: 914 Dreamcatcher C977250 12/2/2012 To 1/12/2013
 EXP: CF501 C1008372 1/12/2013 To 3/25/2013

BLOCKBUSTER 841 LE C923817
 COTTAGE FARM DNA US3000518 PV BT BBU453

RELIANT 8178 BE C974366
 CAIN DNA 605361A PV

550 LE C912923
 CLARK JONES FARMS U 5/06 DNA 9000724116 PV

CATALYST 729 729 LT C775905
 CAIN U 1/00 BT 7216A

CCC MISS CATALYST 3081W4 3081W4 LH C986537
 CAIN

3081 RH C885312
 WINDY HILLS U 1/3 5/06 DNA 375538A BT BBU342

INDIVIDUAL PERFORMANCE RECORDS								
	BW	WW	YW	SCROTAL	REA	%IMF	RIB FAT	RUMP FAT
RATIO	79	89	96		93	96	58	58
ADJ TRAIT	100	565	869		11.22	3.67	0.22	0.36

EXPECTED PROGENY DIFFERENCES						ULTRASOUND EPDs				
	BW	WW	YW	MILK	TM	SC	REA	%IMF	RIB FAT	RUMP FAT
EPD	2.6	7	23	1	4	-0.2	0.17	0.1	-0.02	0.09
ACC	0.47	0.45	0.45	0.14	-	0.24	0.39	0.41	0.26	0.23

104 626Y Bred Heifers

Breeder: CAIN CATTLE CO.
 DOB: 8/16/2011 BBUNo. C1024747
 Sex: F
 Color: RED
 Horn: Scurs

AI: 11/15/2012 914 Dreamcatcher
 EXP: 914 Dreamcatcher C977250 12/2/2012 To 1/12/2013
 EXP: CF501 C1008372 1/12/2013 To 3/25/2013

CJ'S SOUL MAN 168 RH C867835
 CLARK JONES FARMS U 1/2 2/04 DNA US3000427 BT 7670A

C J'S MOTOWN 412 LE C901889
 LAZY SUZAN RANCH U 1/3 5/06 DNA US3000443 BT 8804A

LAURIE BABY 14/2 LE C851607
 ADAIR U 7/03 DNA 1142A BT 7371D

MC MOOSE 0088 LH C829056
 JOERIS BT 7298A

626 626 BE C941391
 CAIN

0-44 LH C836832
 CASEY

INDIVIDUAL PERFORMANCE RECORDS								
	BW	WW	YW	SCROTAL	REA	%IMF	RIB FAT	RUMP FAT
RATIO	100	100						
ADJ TRAIT	65	506						

EXPECTED PROGENY DIFFERENCES						ULTRASOUND EPDs				
	BW	WW	YW	MILK	TM	SC	REA	%IMF	RIB FAT	RUMP FAT
EPD	-2.9	21	33	2	13	1.1	0.01	-0.1	-0.01	-0.05
ACC	PE	PE	PE	PE	PE	PE	PE	PE	PE	PE

103 848Y Bred Heifers

Breeder: CAIN CATTLE CO.
 DOB: 4/20/2011 BBUNo. C1011207
 Sex: F
 Color: RED WHT U/L
 Horn: Scurs

AI: 11/15/2012 914 Dreamcatcher
 EXP: 914 Dreamcatcher C977250 12/2/2012 To 1/12/2013
 EXP: CF501 C1008372 1/12/2013 To 3/25/2013

CATALYST 729 729 LT C775905
 CAIN U 1/00 BT 7216A

CAINS CATALYST 305W6 305W6 LH C985607
 CAIN

30/5 LH C916178
 WILMOTH & SONS DNA 343882A PV BT BBU344

C J'S MOTOWN 412 LE C901889
 LAZY SUZAN RANCH U 1/3 5/06 DNA US3000443 BT 8804A

MISS CJ 848 848 LE C976145
 CLARK JONES

LEIGH ANN'S MAGIC 4059 RE C919703
 SOUTH OAKS U 3/07

INDIVIDUAL PERFORMANCE RECORDS								
	BW	WW	YW	SCROTAL	REA	%IMF	RIB FAT	RUMP FAT
RATIO	109	77	80					
ADJ TRAIT	75	490	727					

EXPECTED PROGENY DIFFERENCES						ULTRASOUND EPDs				
	BW	WW	YW	MILK	TM	SC	REA	%IMF	RIB FAT	RUMP FAT
EPD	-2.9	0	5	2	2	0.2				
ACC	0.47	0.45	0.45	0.14	-	0.26				

105 279Y Bred Heifers

Breeder: CAIN CATTLE CO.
 DOB: 8/23/2011 BBUNo. C1012536
 Sex: F
 Color: BLACK WHT U/L
 Horn: Polled

AI: 11/15/2012 914 Dreamcatcher
 EXP: 914 Dreamcatcher C977250 12/2/2012 To 1/12/2013
 EXP: CF501 C1008372 1/12/2013 To 3/25/2013

CJ'S SOUL MAN 168 RH C867835
 CLARK JONES FARMS U 1/2 2/04 DNA US3000427 BT 7670A

C J'S MOTOWN 412 LE C901889
 LAZY SUZAN RANCH U 1/3 5/06 DNA US3000443 BT 8804A

LAURIE BABY 14/2 LE C851607
 ADAIR U 7/03 DNA 1142A BT 7371D

PUFF DADDY 524 RH C917086
 CLARK JONES DNA US3000522 PV BT BBU380

7279 LH C952482
 CAIN

MISS CJ 513 513 RH C917055
 CLARK JONES U 5/06 DNA 343874A PV BT BBU347

INDIVIDUAL PERFORMANCE RECORDS								
	BW	WW	YW	SCROTAL	REA	%IMF	RIB FAT	RUMP FAT
RATIO	116							
ADJ TRAIT	69							

EXPECTED PROGENY DIFFERENCES						ULTRASOUND EPDs				
	BW	WW	YW	MILK	TM	SC	REA	%IMF	RIB FAT	RUMP FAT
EPD	-3.1	24	40	2	14	1.1	0.3	0.1	0.04	-0.04
ACC	0.54	0.39	0.39	0.21	-	0.29	PE	PE	PE	PE

106

795Y

Bred Heifers

Breeder: CAIN CATTLE CO.
 DOB: 8/30/2011 BBUNo. C1012537
 Sex: F
 Color: BLACK
 Horn: Polled



AI: 11/15/2012 914 Dreamcatcher
 EXP: 914 Dreamcatcher C977250 12/2/2012 To 1/12/2013
 EXP: CF501 C1008372 1/12/2013 To 3/25/2013

CJ'S SOUL MAN 168 RH C867835
 CLARK JONES FARMS U 1/2 2/04 DNA US3000427 BT 7670A

C J'S MOTOWN 412 LE C901889
 LAZY SUZAN RANCH U 1/3 5/06 DNA US3000443 BT 8804A

LAURIE BABY 14/2 LE C851607
 ADAIR U 7/03 DNA 1142A BT 7371D

PUFF DADDY 524 RH C917086
 CLARK JONES DNA US3000522 PV BT BBU380

7795 7795 C966406
 CAIN

BJR 145/5 145/5 LH C715161
 BJR SUMMERFORD DNA 1154A BT 9450A

INDIVIDUAL PERFORMANCE RECORDS

	BW	WW	YW	SCROTAL	REA	%IMF	RIB FAT	RUMP FAT
RATIO	95							
ADJ TRAIT	86							

EXPECTED PROGENY DIFFERENCES

	BW	WW	YW	MILK	TM	SC	REA	%IMF	RIB FAT	RUMP FAT
EPD	-1.4	31	47	2	18	1.2	0.19	0.1	0	-0.05
ACC	0.51	0.38	0.36	0.19	-	0.26	PE	PE	PE	PE

ULTRASOUND EPDs

	BW	WW	YW	MILK	TM	SC	REA	%IMF	RIB FAT	RUMP FAT
EPD	1.2	5	10	-4	-1	-0.3	0.05	0.2	0.03	0.19
ACC	0.55	0.42	0.41	0.24	-	0.31	PE	PE	PE	PE

108

900Y

Bred Heifers

Breeder: CAIN CATTLE CO.
 DOB: 10/20/2011 BBUNo. C1012543
 Sex: F
 Color: BLACK MOT U/L
 Horn: Polled



AI: 11/15/2012 914 Dreamcatcher
 EXP: 914 Dreamcatcher C977250 12/2/2012 To 1/12/2013
 EXP: CF501 C1008372 1/12/2013 To 3/25/2013

CJ'S SOUL MAN 168 RH C867835
 CLARK JONES FARMS U 1/2 2/04 DNA US3000427 BT 7670A

BLOCKBUSTER 841 LE C923817
 COTTAGE FARM DNA US3000518 PV BT BBU453

BOMB SHELL 396 LE C742387
 COTTAGE FARM U 1/2 10/00 DNA 313359A BT 6758B

BLACK BAYOU 1071/3 LE C892444
 CHANNAROCK FARM U 1/2 5/06 DNA US3000542 BT 8891A

CCC MISS BLK BAYOU 890 8900 LH C985554
 CAIN DNA 555351A PV

9-54 LH C814260
 CASEY DNA 492775A

INDIVIDUAL PERFORMANCE RECORDS

	BW	WW	YW	SCROTAL	REA	%IMF	RIB FAT	RUMP FAT
RATIO	88							
ADJ TRAIT	92							

EXPECTED PROGENY DIFFERENCES

	BW	WW	YW	MILK	TM	SC	REA	%IMF	RIB FAT	RUMP FAT
EPD	2	15	30	1	8	0	0.35	0.1	0.07	0.24
ACC	0.5	0.36	0.36	0.17	-	0.24	PE	PE	PE	PE

ULTRASOUND EPDs

	BW	WW	YW	MILK	TM	SC	REA	%IMF	RIB FAT	RUMP FAT
EPD	0.9	12	18	0	6	0.2				
ACC	0.48	0.39	0.39	0.31	-	0.34				

107

897Y

Bred Heifers

Breeder: CAIN CATTLE CO.
 DOB: 9/14/2011 BBUNo. C1012535
 Sex: F
 Color: RED
 Horn: Polled



AI: 11/15/2012 914 Dreamcatcher
 EXP: 914 Dreamcatcher C977250 12/2/2012 To 1/12/2013
 EXP: CF501 C1008372 1/12/2013 To 3/25/2013

CJ'S SOUL MAN 168 RH C867835
 CLARK JONES FARMS U 1/2 2/04 DNA US3000427 BT 7670A

BLOCKBUSTER 841 LE C923817
 COTTAGE FARM DNA US3000518 PV BT BBU453

BOMB SHELL 396 LE C742387
 COTTAGE FARM U 1/2 10/00 DNA 313359A BT 6758B

CJ'S SOUL MAN 168 RH C867835
 CLARK JONES FARMS U 1/2 2/04 DNA US3000427 BT 7670A

897 LE C923811
 COTTAGE FARM DNA 343883A BT BBU343

SEX GODESS 398 LE C773489
 COTTAGE FARM U 1/2 7/03 BT 6954B

INDIVIDUAL PERFORMANCE RECORDS

	BW	WW	YW	SCROTAL	REA	%IMF	RIB FAT	RUMP FAT
RATIO	103							
ADJ TRAIT	80							

EXPECTED PROGENY DIFFERENCES

	BW	WW	YW	MILK	TM	SC	REA	%IMF	RIB FAT	RUMP FAT
EPD	1.2	5	10	-4	-1	-0.3	0.05	0.2	0.03	0.19
ACC	0.55	0.42	0.41	0.24	-	0.31	PE	PE	PE	PE

ULTRASOUND EPDs

	BW	WW	YW	MILK	TM	SC	REA	%IMF	RIB FAT	RUMP FAT
EPD	1.2	5	10	-4	-1	-0.3	0.05	0.2	0.03	0.19
ACC	0.55	0.42	0.41	0.24	-	0.31	PE	PE	PE	PE

109

86/12

Open Heifers

Breeder: L TWO RANCH
 DOB: 1/20/2012 BBUNo. C1010583
 Sex: F
 Color: RED
 Horn: Horns



** RED SUGAR 104/93 LH C529759
 L TWO RANCH U 1/2 11/94 DNA 184A BT 4550F

** SYNERGY 84/95 LH C615710
 L TWO CATTLE U 1/2 1/97 DNA 183A BT 5779A

** PRISSY LADY 117/93 LH C537931
 L TWO RANCH U 1/2 9/95 BT 5207A

L2 CAPTAIN JACK 43/07 LH C947413
 L TWO RANCH U 1/2 2/09 DNA US4039456 PV

SIMPLY SUE L2 83/09 LH C981631
 L TWO RANCH DNA MMI085499 PV

PEGGY SUE 20/06 LH C929046
 L TWO RANCH U 1/2 12/07 DNA 314078A PV BT BBU214

INDIVIDUAL PERFORMANCE RECORDS

	BW	WW	YW	SCROTAL	REA	%IMF	RIB FAT	RUMP FAT
RATIO	102	100	100		100	100	100	100
ADJ TRAIT	68	578	816		9.8	4.13	0.38	0.6

EXPECTED PROGENY DIFFERENCES

	BW	WW	YW	MILK	TM	SC	REA	%IMF	RIB FAT	RUMP FAT
EPD	0.9	12	18	0	6	0.2				
ACC	0.48	0.39	0.39	0.31	-	0.34				

ULTRASOUND EPDs

	BW	WW	YW	MILK	TM	SC	REA	%IMF	RIB FAT	RUMP FAT
EPD	0.9	12	18	0	6	0.2				
ACC	0.48	0.39	0.39	0.31	-	0.34				

110 201Z3 Open Heifers

Breeder: CAIN CATTLE CO.
 DOB: 2/16/2012 BBUNo. C1021502
 Sex: F
 Color: RED WHT U/L MOTTLE UND
 Horn: Polled



**** L2 CAPTAIN SUGAR 12/02 LR C857153**
 L TWO RANCH U 1/2 2/04 DNA 134A BT 7526A

CF DREAM CATCHER 914 LE C977250
 COTTAGE FARM DNA US3000924 PV

**** OASIS 655 LE C828198**
 COTTAGE FARM U 1/2 2/04 DNA 251620A BT 7628A

9020 LH C798779
 SPEAR RANCHES U 1/2 12/02 DNA 314158A BT 7545A

2201 LE C872045
 SPEAR RANCHES DNA 9000724113

*** 9086-2C LE S21174**
 SPEAR RANCHES

INDIVIDUAL PERFORMANCE RECORDS								
	BW	WW	YW	SCROTAL	REA	%IMF	RIB FAT	RUMP FAT
RATIO	90	119	115		112	112	149	136
ADJ TRAIT	79	595	944		11.94	3.49	0.57	0.63

EXPECTED PROGENY DIFFERENCES							ULTRASOUND EPDs			
	BW	WW	YW	MILK	TM	SC	REA	%IMF	RIB FAT	RUMP FAT
EPD	0.8	27	38	3	16	0.6	0.1	0	0	-0.07
ACC	0.48	0.45	0.41	0.17	-	0.24	PE	PE	PE	PE

112 169Z Open Heifers

Breeder: CAIN CATTLE CO.
 DOB: 2/19/2012 BBUNo. C1012573
 Sex: F
 Color: RED WHT U/L
 Horn: Scurs



**** L2 CAPTAIN SUGAR 12/02 LR C857153**
 L TWO RANCH U 1/2 2/04 DNA 134A BT 7526A

CF DREAM CATCHER 914 LE C977250
 COTTAGE FARM DNA US3000924 PV

**** OASIS 655 LE C828198**
 COTTAGE FARM U 1/2 2/04 DNA 251620A BT 7628A

BLOCKBUSTER 841 LE C923817
 COTTAGE FARM DNA US3000518 PV BT BBU453

8169 8169 LH C963649
 CAIN

2-70 LH C876631
 CASEY

INDIVIDUAL PERFORMANCE RECORDS								
	BW	WW	YW	SCROTAL	REA	%IMF	RIB FAT	RUMP FAT
RATIO	107	120	108		103	99	70	91
ADJ TRAIT	71	620	914		11.95	3.5	0.21	0.42

EXPECTED PROGENY DIFFERENCES							ULTRASOUND EPDs			
	BW	WW	YW	MILK	TM	SC	REA	%IMF	RIB FAT	RUMP FAT
EPD	0.8	24	38	2	14	0.5	0.28	0.1	0.06	0.02
ACC	0.5	0.47	0.41	0.14	-	0.23	PE	PE	PE	PE

111 525Z Open Heifers

Breeder: CAIN CATTLE CO.
 DOB: 2/18/2012 BBUNo. C1021495
 Sex: F
 Color: RED PAINT
 Horn: Polled



9020 LH C798779
 SPEAR RANCHES U 1/2 12/02 DNA 314158A BT 7545A

MAVERICK 17/557 LH C951166
 LYSSY & SONS U 1/2 9/08 DNA US3000526 PV

**** MISS TABASCO 929/4 929/4 LH C915230**
 COLLIER FARMS U 2/2 12/07 DNA 335639A

CJ'S SOUL MAN 168 RH C867835
 CLARK JONES FARMS U 1/2 2/04 DNA US3000427 BT 7670A

525 LE C917574
 LAZY SUZAN RANCH U 5/06 DNA 343876A PV BT BBU349

LAURIE BABY 14/2 LE C851607
 ADAIR U 7/03 DNA 1142A BT 7371D

INDIVIDUAL PERFORMANCE RECORDS								
	BW	WW	YW	SCROTAL	REA	%IMF	RIB FAT	RUMP FAT
RATIO	116	84	88		97	105	65	80
ADJ TRAIT	60	419	723		10.29	3.29	0.25	0.37

EXPECTED PROGENY DIFFERENCES							ULTRASOUND EPDs			
	BW	WW	YW	MILK	TM	SC	REA	%IMF	RIB FAT	RUMP FAT
EPD	-3.4	7	9	2	6	0.3	-0.05	0	-0.07	-0.15
ACC	0.48	0.45	0.39	0.15	-	0.23	PE	PE	PE	PE

113 005Z Open Heifers

Breeder: CAIN CATTLE CO.
 DOB: 2/21/2012 BBUNo. C1020854
 Sex: F
 Color: RED WHT U/L
 Horn: Horns



**** L2 CAPTAIN SUGAR 12/02 LR C857153**
 L TWO RANCH U 1/2 2/04 DNA 134A BT 7526A

CF DREAM CATCHER 914 LE C977250
 COTTAGE FARM DNA US3000924 PV

**** OASIS 655 LE C828198**
 COTTAGE FARM U 1/2 2/04 DNA 251620A BT 7628A

BLACK BAYOU 1071/3 LE C892444
 CHANNAROCK FARM U 1/2 5/06 DNA US3000542 BT 8891A

8005 8005 LH C963284
 CAIN

6-69 LH C712298
 CASEY

INDIVIDUAL PERFORMANCE RECORDS								
	BW	WW	YW	SCROTAL	REA	%IMF	RIB FAT	RUMP FAT
RATIO	105	111	108		105	105	107	111
ADJ TRAIT	73	570	918		12.11	3.7	0.32	0.51

EXPECTED PROGENY DIFFERENCES							ULTRASOUND EPDs			
	BW	WW	YW	MILK	TM	SC	REA	%IMF	RIB FAT	RUMP FAT
EPD	0.5	19	28	2	12	0.6	0.19	-0.1	-0.07	-0.08
ACC	0.5	0.45	0.39	0.15	-	0.23	PE	PE	PE	PE

114 850Z Open Heifers

Breeder: CAIN CATTLE CO.
 DOB: 2/21/2012 BBUNo. C1012566
 Sex: F
 Color: BLACK STAR FACE WHT/UL
 Horn: Horns



115 99Z Open Heifers

Breeder: CAIN CATTLE CO.
 DOB: 2/21/2012 BBUNo. C1012516
 Sex: F
 Color: RED
 Horn: Horns



**** L2 CAPTAIN SUGAR 12/02 LR C857153**
 L TWO RANCH U 1/2 2/04 DNA 134A BT 7526A

CF DREAM CATCHER 914 LE C977250
 COTTAGE FARM DNA US3000924 PV

**** OASIS 655 LE C828198**
 COTTAGE FARM U 1/2 2/04 DNA 251620A BT 7628A

C J'S MOTOWN 412 LE C901889
 LAZY SUZAN RANCH U 1/3 5/06 DNA US3000443 BT 8804A

MISS CJ 850 850 LE C976146
 CLARK JONES

1625 LE C923750
 DUNKIN'S FOUR D U 3/07

INDIVIDUAL PERFORMANCE RECORDS								
	BW	WW	YW	SCROTAL	REA	%IMF	RIB FAT	RUMP FAT
RATIO	120	93	88		94	79	60	107
ADJ TRAIT	61	478	750		10.88	2.8	0.18	0.49

EXPECTED PROGENY DIFFERENCES							ULTRASOUND EPDs			
	BW	WW	YW	MILK	TM	SC	REA	%IMF	RIB FAT	RUMP FAT
EPD	-2	16	24	-1	7	0.7	0.01	0	-0.02	-0.06
ACC	0.51	0.48	0.42	0.15	-	0.26	PE	PE	PE	PE

116 800Z Open Heifers

Breeder: CAIN CATTLE CO.
 DOB: 2/23/2012 BBUNo. C1012523
 Sex: F
 Color: RED STAR FACE WHT U/L
 Horn: Polled



117 845Z Open Heifers

Breeder: CAIN CATTLE CO.
 DOB: 2/23/2012 BBUNo. C1012524
 Sex: F
 Color: RED WHITE FACE WHT U/L
 Horn: Scurs



9020 LH C798779
 SPEAR RANCHES U 1/2 12/02 DNA 314158A BT 7545A

MAVERICK 17/557 LH C951166
 LYSSY & SONS U 1/2 9/08 DNA US3000526 PV

**** MISS TABASCO 929/4 929/4 LH C915230**
 COLLIER FARMS U 2/2 12/07 DNA 335639A

8020 8020 LH C961539
 CAIN DNA 508664A

CAINS MIS DOC8020 800X LH C996167
 CAIN

800 800 LH C961097
 CAIN

INDIVIDUAL PERFORMANCE RECORDS								
	BW	WW	YW	SCROTAL	REA	%IMF	RIB FAT	RUMP FAT
RATIO	78	132	114		114	102	70	94
ADJ TRAIT	96	682	963		13.24	3.6	0.21	0.43

EXPECTED PROGENY DIFFERENCES							ULTRASOUND EPDs			
	BW	WW	YW	MILK	TM	SC	REA	%IMF	RIB FAT	RUMP FAT
EPD	-0.2	31	38	2	18	0.9	0.15	-0.1	-0.11	-0.16
ACC	0.48	0.34	0.33	0.1	-	0.14	PE	PE	PE	PE

9020 LH C798779
 SPEAR RANCHES U 1/2 12/02 DNA 314158A BT 7545A

MAVERICK 17/557 LH C951166
 LYSSY & SONS U 1/2 9/08 DNA US3000526 PV

**** MISS TABASCO 929/4 929/4 LH C915230**
 COLLIER FARMS U 2/2 12/07 DNA 335639A

S & D 456 RH C911212
 CLARK JONES

CAINS MS S&D 99X 99X LH C995755
 CAIN

9-9 LH C814217
 CASEY

INDIVIDUAL PERFORMANCE RECORDS								
	BW	WW	YW	SCROTAL	REA	%IMF	RIB FAT	RUMP FAT
RATIO	119	102	91		100	119	77	100
ADJ TRAIT	64	527	769		11.54	4.2	0.23	0.46

EXPECTED PROGENY DIFFERENCES							ULTRASOUND EPDs			
	BW	WW	YW	MILK	TM	SC	REA	%IMF	RIB FAT	RUMP FAT
EPD	-2.9	10	12	4	9	0.4	0.05	0.1	-0.08	-0.09
ACC	0.5	0.47	0.41	0.12	-	0.19	PE	PE	PE	PE

9020 LH C798779
 SPEAR RANCHES U 1/2 12/02 DNA 314158A BT 7545A

MAVERICK 17/557 LH C951166
 LYSSY & SONS U 1/2 9/08 DNA US3000526 PV

**** MISS TABASCO 929/4 929/4 LH C915230**
 COLLIER FARMS U 2/2 12/07 DNA 335639A

BLOCKBUSTER 841 LE C923817
 COTTAGE FARM DNA US3000518 PV BT BBU453

CAINS MS BLOCKBUSTER 845X 845X LH C995741
 CAIN

845 845 LH C961687
 CAIN

INDIVIDUAL PERFORMANCE RECORDS								
	BW	WW	YW	SCROTAL	REA	%IMF	RIB FAT	RUMP FAT
RATIO	108		100		100	100	100	100
ADJ TRAIT	72		871		11.03	4.4	0.43	0.59

EXPECTED PROGENY DIFFERENCES							ULTRASOUND EPDs			
	BW	WW	YW	MILK	TM	SC	REA	%IMF	RIB FAT	RUMP FAT
EPD	-3.3	8	13	1	5	0.2	0.09	0.1	0.02	0.1
ACC	0.48	0.34	0.33	0.1	-	0.15	PE	PE	PE	PE

118 201Z2 Open Heifers

Breeder: CAIN CATTLE CO.
 DOB: 2/24/2012 BBUNo. C1020863
 Sex: F
 Color: RED
 Horn: Polled



**** L2 CAPTAIN SUGAR 12/02 LR C857153**
 L TWO RANCH U 1/2 2/04 DNA 134A BT 7526A

CF DREAM CATCHER 914 LE C977250
 COTTAGE FARM DNA US3000924 PV

**** OASIS 655 LE C828198**
 COTTAGE FARM U 1/2 2/04 DNA 251620A BT 7628A

9020 LH C798779
 SPEAR RANCHES U 1/2 12/02 DNA 314158A BT 7545A

2201 LE C872045
 SPEAR RANCHES DNA 9000724113

*** 9086-2C LE S21174**
 SPEAR RANCHES

INDIVIDUAL PERFORMANCE RECORDS								
	BW	WW	YW	SCROTAL	REA	%IMF	RIB FAT	RUMP FAT
RATIO	107	110	108		103	74	81	91
ADJ TRAIT	67	548	894		10.97	2.31	0.31	0.42

EXPECTED PROGENY DIFFERENCES							ULTRASOUND EPDs			
	BW	WW	YW	MILK	TM	SC	REA	%IMF	RIB FAT	RUMP FAT
EPD	-0.3	23	32	3	14	0.5	0.1	0	0	-0.07
ACC	0.48	0.45	0.41	0.17	-	0.24	PE	PE	PE	PE

120 525Z3 Open Heifers

Breeder: CAIN CATTLE CO.
 DOB: 2/25/2012 BBUNo. C1021506
 Sex: F
 Color: RED WHT U/L
 Horn: Polled



**** L2 CAPTAIN SUGAR 12/02 LR C857153**
 L TWO RANCH U 1/2 2/04 DNA 134A BT 7526A

CF DREAM CATCHER 914 LE C977250
 COTTAGE FARM DNA US3000924 PV

**** OASIS 655 LE C828198**
 COTTAGE FARM U 1/2 2/04 DNA 251620A BT 7628A

CJ'S SOUL MAN 168 RH C867835
 CLARK JONES FARMS U 1/2 2/04 DNA US3000427 BT 7670A

525 LE C917574
 LAZY SUZAN RANCH U 5/06 DNA 343876A PV BT BBU349

LAURIE BABY 14/2 LE C851607
 ADAIR U 7/03 DNA 1142A BT 7371D

INDIVIDUAL PERFORMANCE RECORDS								
	BW	WW	YW	SCROTAL	REA	%IMF	RIB FAT	RUMP FAT
RATIO	87	87	89		88	109	105	93
ADJ TRAIT	82	433	738		9.31	3.41	0.4	0.43

EXPECTED PROGENY DIFFERENCES							ULTRASOUND EPDs			
	BW	WW	YW	MILK	TM	SC	REA	%IMF	RIB FAT	RUMP FAT
EPD	1.3	13	24	1	7	0.3	0.09	0	-0.04	-0.13
ACC	0.48	0.45	0.39	0.17	-	0.26	PE	PE	PE	PE

119 815Z Open Heifers

Breeder: CAIN CATTLE CO.
 DOB: 2/24/2012 BBUNo. C1012565
 Sex: F
 Color: RED
 Horn: Horns



**** L2 CAPTAIN SUGAR 12/02 LR C857153**
 L TWO RANCH U 1/2 2/04 DNA 134A BT 7526A

CF DREAM CATCHER 914 LE C977250
 COTTAGE FARM DNA US3000924 PV

**** OASIS 655 LE C828198**
 COTTAGE FARM U 1/2 2/04 DNA 251620A BT 7628A

DOC 2D-0C81 LE C893778
 CHANNAROCK FARM U 1/2 8/04 DNA 308374A

815 815 LH C961104
 CAIN

548 LE C907149
 CAIN

INDIVIDUAL PERFORMANCE RECORDS								
	BW	WW	YW	SCROTAL	REA	%IMF	RIB FAT	RUMP FAT
RATIO	104	112	101		108	105	100	107
ADJ TRAIT	74	578	857		12.45	3.71	0.3	0.49

EXPECTED PROGENY DIFFERENCES							ULTRASOUND EPDs			
	BW	WW	YW	MILK	TM	SC	REA	%IMF	RIB FAT	RUMP FAT
EPD	-0.5	34	40	-2	15	1.1	0.11	0	-0.03	0.04
ACC	0.51	0.47	0.41	0.15	-	0.24	PE	PE	PE	PE

121 239Z Open Heifers

Breeder: CAIN CATTLE CO.
 DOB: 2/29/2012 BBUNo. C1012576
 Sex: F
 Color: RED MOT U/L
 Horn: Horns



9020 LH C798779
 SPEAR RANCHES U 1/2 12/02 DNA 314158A BT 7545A

MAVERICK 17/557 LH C951166
 LYSSY & SONS U 1/2 9/08 DNA US3000526 PV

**** MISS TABASCO 929/4 929/4 LH C915230**
 COLLIER FARMS U 2/2 12/07 DNA 335639A

**** CLASSIC COTTON 89/135 LH C380077**
 MONTGOMERY PROPRTIE U 1/3 10/91 DNA 339125A BT 3640A

623/9 LH C985884
 COLLIER FARMS

**** TIGER WHISPER 64/4 LH C921924**
 DOS SOMBREROS RANCH DNA US4019054 PV

INDIVIDUAL PERFORMANCE RECORDS								
	BW	WW	YW	SCROTAL	REA	%IMF	RIB FAT	RUMP FAT
RATIO	118	99	90		81	100	123	107
ADJ TRAIT	65	507	764		9.34	3.52	0.37	0.49

EXPECTED PROGENY DIFFERENCES							ULTRASOUND EPDs			
	BW	WW	YW	MILK	TM	SC	REA	%IMF	RIB FAT	RUMP FAT
EPD	-2.7	18	22	1	10	0.6				
ACC	0.5	0.48	0.42	0.15	-	0.23				

122 216Z Open Heifers

Breeder: CAIN CATTLE CO.
 DOB: 3/1/2012 BBUNo. C1012551
 Sex: F
 Color: RED
 Horn: Horns



**** L2 CAPTAIN SUGAR 12/02 LR C857153**
 L TWO RANCH U 1/2 2/04 DNA 134A BT 7526A

CF DREAM CATCHER 914 LE C977250
 COTTAGE FARM DNA US3000924 PV

**** OASIS 655 LE C828198**
 COTTAGE FARM U 1/2 2/04 DNA 251620A BT 7628A

011 RE C864074
 ISLAND FARM

21/6 LH C927108
 HILL'S H & H U 8/07

8285 LH C876704
 NELAZ RANCH U 1/3 5/04

INDIVIDUAL PERFORMANCE RECORDS								
	BW	WW	YW	SCROTAL	REA	%IMF	RIB FAT	RUMP FAT
RATIO	83	105	102		91	63	57	109
ADJ TRAIT	89	540	864		10.49	2.22	0.17	0.5

EXPECTED PROGENY DIFFERENCES							ULTRASOUND EPDs			
	BW	WW	YW	MILK	TM	SC	REA	%IMF	RIB FAT	RUMP FAT
EPD	2.9	19	30	0	9	0.4	0.03	-0.2	-0.1	-0.05
ACC	0.48	0.45	0.39	0.14	-	0.23	PE	PE	PE	PE

124 312Z Open Heifers

Breeder: CAIN CATTLE CO.
 DOB: 3/2/2012 BBUNo. C1021496
 Sex: F
 Color: BLACK MOT U/L
 Horn: Polled



CJ'S SOUL MAN 168 RH C867835
 CLARK JONES FARMS U 1/2 2/04 DNA US3000427 BT 7670A

C J'S MOTOWN 412 LE C901889
 LAZY SUZAN RANCH U 1/3 5/06 DNA US3000443 BT 8804A

LAURIE BABY 14/2 LE C851607
 ADAIR U 7/03 DNA 1142A BT 7371D

MULTIPLE

3-12 LH C898547
 CASEY

1-0 LH C838662
 CASEY

INDIVIDUAL PERFORMANCE RECORDS								
	BW	WW	YW	SCROTAL	REA	%IMF	RIB FAT	RUMP FAT
RATIO	117	97	98		88	97	100	72
ADJ TRAIT	64	497	829		10.14	3.42	0.3	0.33

EXPECTED PROGENY DIFFERENCES							ULTRASOUND EPDs			
	BW	WW	YW	MILK	TM	SC	REA	%IMF	RIB FAT	RUMP FAT
EPD	-4.1	10	20	4	9	0.7	-0.01	0	0.01	-0.05
ACC	0.48	0.47	0.39	0.15	-	0.24	PE	PE	PE	PE

123 239Z2 Open Heifers

Breeder: CAIN CATTLE CO.
 DOB: 3/2/2012 BBUNo. C1021721
 Sex: F
 Color: RED WHT U/L
 Horn: Polled



CJ'S SOUL MAN 168 RH C867835
 CLARK JONES FARMS U 1/2 2/04 DNA US3000427 BT 7670A

C J'S MOTOWN 412 LE C901889
 LAZY SUZAN RANCH U 1/3 5/06 DNA US3000443 BT 8804A

LAURIE BABY 14/2 LE C851607
 ADAIR U 7/03 DNA 1142A BT 7371D

MULTIPLE

2-39 LH C876602
 CASEY

2-48 LH C668037
 CASEY

INDIVIDUAL PERFORMANCE RECORDS								
	BW	WW	YW	SCROTAL	REA	%IMF	RIB FAT	RUMP FAT
RATIO	117	95						
ADJ TRAIT	64	488						

EXPECTED PROGENY DIFFERENCES							ULTRASOUND EPDs			
	BW	WW	YW	MILK	TM	SC	REA	%IMF	RIB FAT	RUMP FAT
EPD	-4.1	10	21	2	7	0.7	-0.02	0	0.03	-0.06
ACC	0.48	0.47	0.41	0.17	-	0.26	PE	PE	PE	PE

125 329Z Open Heifers

Breeder: CAIN CATTLE CO.
 DOB: 3/2/2012 BBUNo. C1012554
 Sex: F
 Color: RED
 Horn: Horns



**** L2 CAPTAIN SUGAR 12/02 LR C857153**
 L TWO RANCH U 1/2 2/04 DNA 134A BT 7526A

CF DREAM CATCHER 914 LE C977250
 COTTAGE FARM DNA US3000924 PV

**** OASIS 655 LE C828198**
 COTTAGE FARM U 1/2 2/04 DNA 251620A BT 7628A

CATALYST 729 729 LT C775905
 CAIN U 1/00 BT 7216A

329 BE C889034
 CAIN DNA 1115A BT 9413A

4120 LH C677173
 FRENZEL DNA 1109A BT 7791B

INDIVIDUAL PERFORMANCE RECORDS								
	BW	WW	YW	SCROTAL	REA	%IMF	RIB FAT	RUMP FAT
RATIO	101	100	100		100	100	100	100
ADJ TRAIT	69	523	841		10.73	3.32	0.25	0.33

EXPECTED PROGENY DIFFERENCES							ULTRASOUND EPDs			
	BW	WW	YW	MILK	TM	SC	REA	%IMF	RIB FAT	RUMP FAT
EPD	0.9	22	33	5	16	0.5	0.03	0.1	-0.01	-0.05
ACC	0.45	0.36	0.33	0.15	-	0.21	PE	PE	PE	PE

126

458Z

Open Heifers

Breeder: CAIN CATTLE CO.
 DOB: 3/7/2012 BBUNo. C1012555
 Sex: F
 Color: RED
 Horn: Horns



9020 LH C798779
 SPEAR RANCHES U 1/2 12/02 DNA 314158A BT 7545A

MAVERICK 17/557 LH C951166
 LYSSY & SONS U 1/2 9/08 DNA US3000526 PV

** MISS TABASCO 929/4 929/4 LH C915230
 COLLIER FARMS U 2/2 12/07 DNA 335639A

CJ'S SOUL MAN 168 RH C867835
 CLARK JONES FARMS U 1/2 2/04 DNA US3000427 BT 7670A

MISS CJ 458 458 LE C925615
 CLARK JONES DNA 9000724112

108/8 LH C751343
 ADAIR U 1/3 8/04 DNA 506793A

INDIVIDUAL PERFORMANCE RECORDS

	BW	WW	YW	SCROTAL	REA	%IMF	RIB FAT	RUMP FAT
RATIO	102	106	103		81	83	90	83
ADJ TRAIT	75	544	877		9.38	2.93	0.27	0.38

EXPECTED PROGENY DIFFERENCES

	BW	WW	YW	MILK	TM	SC	REA	%IMF	RIB FAT	RUMP FAT
EPD	-1.9	14	16	1	8	0.5	-0.05	0.1	-0.01	-0.02
ACC	0.5	0.47	0.41	0.15	-	0.23	PE	PE	PE	PE

ULTRASOUND EPDs

	BW	WW	YW	MILK	TM	SC	REA	%IMF	RIB FAT	RUMP FAT
EPD	2.2	19	30	1	10	0.4	0.07	-0.1	-0.04	-0.08
ACC	0.51	0.47	0.41	0.17	-	0.24	PE	PE	PE	PE

128

530Z

Open Heifers

Breeder: CAIN CATTLE CO.
 DOB: 3/8/2012 BBUNo. C1012557
 Sex: F
 Color: RED
 Horn: Polled



9020 LH C798779
 SPEAR RANCHES U 1/2 12/02 DNA 314158A BT 7545A

MAVERICK 17/557 LH C951166
 LYSSY & SONS U 1/2 9/08 DNA US3000526 PV

** MISS TABASCO 929/4 929/4 LH C915230
 COLLIER FARMS U 2/2 12/07 DNA 335639A

CJ'S SOUL MAN 168 RH C867835
 CLARK JONES FARMS U 1/2 2/04 DNA US3000427 BT 7670A

MISS CJ 530 530 RH C917053
 CLARK JONES U 5/06 DNA 9000724114 PV

MAXINE 15-0 RH C823797
 D T RANCH U 1/2 8/04 DNA 1022A BT 9343A

INDIVIDUAL PERFORMANCE RECORDS

	BW	WW	YW	SCROTAL	REA	%IMF	RIB FAT	RUMP FAT
RATIO	83	109	105		95	86	144	100
ADJ TRAIT	89	561	892		10.98	3.04	0.43	0.46

EXPECTED PROGENY DIFFERENCES

	BW	WW	YW	MILK	TM	SC	REA	%IMF	RIB FAT	RUMP FAT
EPD	-0.1	19	24	1	10	0.4	-0.05	0.1	-0.04	-0.07
ACC	0.51	0.47	0.41	0.15	-	0.23	PE	PE	PE	PE

ULTRASOUND EPDs

	BW	WW	YW	MILK	TM	SC	REA	%IMF	RIB FAT	RUMP FAT
EPD	-1.1	2	11	4	5	-0.2	0.28	0.2	0.11	0.34
ACC	0.5	0.48	0.44	0.21	-	0.26	PE	PE	PE	PE

127

617Z

Open Heifers

Breeder: CAIN CATTLE CO.
 DOB: 3/7/2012 BBUNo. C1012561
 Sex: F
 Color: RED MOT U/L
 Horn: Scurs



** L2 CAPTAIN SUGAR 12/02 LR C857153
 L TWO RANCH U 1/2 2/04 DNA 134A BT 7526A

CF DREAM CATCHER 914 LE C977250
 COTTAGE FARM DNA US3000924 PV

** OASIS 655 LE C828198
 COTTAGE FARM U 1/2 2/04 DNA 251620A BT 7628A

ONYX 415-1 LE C837437
 T V R U 5/03 DNA 364383A BT 7530A

617 LE C939784
 T V R DNA 9000724117

SIERRA 91/99 LH C790043
 L TWO RANCH U 2/00 BT 6925C

INDIVIDUAL PERFORMANCE RECORDS

	BW	WW	YW	SCROTAL	REA	%IMF	RIB FAT	RUMP FAT
RATIO	90	105	105		102	80	134	102
ADJ TRAIT	85	543	893		11.78	2.83	0.4	0.47

EXPECTED PROGENY DIFFERENCES

	BW	WW	YW	MILK	TM	SC	REA	%IMF	RIB FAT	RUMP FAT
EPD	2.2	19	30	1	10	0.4	0.07	-0.1	-0.04	-0.08
ACC	0.51	0.47	0.41	0.17	-	0.24	PE	PE	PE	PE

ULTRASOUND EPDs

	BW	WW	YW	MILK	TM	SC	REA	%IMF	RIB FAT	RUMP FAT
EPD	2.2	19	30	1	10	0.4	0.07	-0.1	-0.04	-0.08
ACC	0.51	0.47	0.41	0.17	-	0.24	PE	PE	PE	PE

129

105Z

Open Heifers

Breeder: CAIN CATTLE CO.
 DOB: 3/9/2012 BBUNo. C1021504
 Sex: F
 Color: RED
 Horn: Polled



CJ'S SOUL MAN 168 RH C867835
 CLARK JONES FARMS U 1/2 2/04 DNA US3000427 BT 7670A

BLOCKBUSTER 841 LE C923817
 COTTAGE FARM DNA US3000518 PV BT BBU453

BOMB SHELL 396 LE C742387
 COTTAGE FARM U 1/2 10/00 DNA 313359A BT 6758B

MULTIPLE

7-105 LH C757802
 CASEY

5-6 LH C678633
 CASEY

INDIVIDUAL PERFORMANCE RECORDS

	BW	WW	YW	SCROTAL	REA	%IMF	RIB FAT	RUMP FAT
RATIO	120	96	104		113	115	127	122
ADJ TRAIT	61	493	886		13.05	4.04	0.38	0.56

EXPECTED PROGENY DIFFERENCES

	BW	WW	YW	MILK	TM	SC	REA	%IMF	RIB FAT	RUMP FAT
EPD	-1.1	2	11	4	5	-0.2	0.28	0.2	0.11	0.34
ACC	0.5	0.48	0.44	0.21	-	0.26	PE	PE	PE	PE

ULTRASOUND EPDs

	BW	WW	YW	MILK	TM	SC	REA	%IMF	RIB FAT	RUMP FAT
EPD	-1.1	2	11	4	5	-0.2	0.28	0.2	0.11	0.34
ACC	0.5	0.48	0.44	0.21	-	0.26	PE	PE	PE	PE

130 339Z Open Heifers

Breeder: CAIN CATTLE CO.
DOB: 3/9/2012 BBUNo. C1021497
Sex: F
Color: RED
Horn: Polled



131 613Z Open Heifers

Breeder: CAIN CATTLE CO.
DOB: 3/10/2012 BBUNo. C1021503
Sex: F
Color: RED WHT U/L
Horn: Polled



CJ'S SOUL MAN 168 RH C867835
CLARK JONES FARMS U 1/2 2/04 DNA US3000427 BT 7670A
C J'S MOTOWN 412 LE C901889
LAZY SUZAN RANCH U 1/3 5/06 DNA US3000443 BT 8804A
LAURIE BABY 14/2 LE C851607
ADAIR U 7/03 DNA 1142A BT 7371D

MULTIPLE

3-39 LH C898820
CASEY
5-34 LH C678657
CASEY

INDIVIDUAL PERFORMANCE RECORDS								
	BW	WW	YW	SCROTAL	REA	%IMF	RIB FAT	RUMP FAT
RATIO	109	100	99		91	120	144	98
ADJ TRAIT	69	514	842		10.55	4.24	0.43	0.45

EXPECTED PROGENY DIFFERENCES							ULTRASOUND EPDs			
	BW	WW	YW	MILK	TM	SC	REA	%IMF	RIB FAT	RUMP FAT
EPD	-3.2	16	25	4	13	0.9	-0.04	0.1	0.04	-0.08
ACC	0.48	0.45	0.39	0.14	-	0.24	PE	PE	PE	PE

CJ'S SOUL MAN 168 RH C867835
CLARK JONES FARMS U 1/2 2/04 DNA US3000427 BT 7670A
BLOCKBUSTER 841 LE C923817
COTTAGE FARM DNA US3000518 PV BT BBU453
BOMB SHELL 396 LE C742387
COTTAGE FARM U 1/2 10/00 DNA 313359A BT 6758B

MULTIPLE

6-13 LH C934836
CASEY
4-10 LH C902816
CASEY

INDIVIDUAL PERFORMANCE RECORDS								
	BW	WW	YW	SCROTAL	REA	%IMF	RIB FAT	RUMP FAT
RATIO	111	101	98		120	103	97	98
ADJ TRAIT	68	518	831		13.84	3.64	0.29	0.45

EXPECTED PROGENY DIFFERENCES							ULTRASOUND EPDs			
	BW	WW	YW	MILK	TM	SC	REA	%IMF	RIB FAT	RUMP FAT
EPD	-1.1	2	7	3	4	-0.1	0.26	0.3	0.11	0.21
ACC	0.5	0.45	0.42	0.15	-	0.24	PE	PE	PE	PE

132 166Z Open Heifers

Breeder: CAIN CATTLE CO.
DOB: 3/13/2012 BBUNo. C1012572
Sex: F
Color: RED
Horn: Polled



133 897Z Open Heifers

Breeder: CAIN CATTLE CO.
DOB: 3/15/2012 BBUNo. C1012567
Sex: F
Color: RED MOT U/L
Horn: Scurs



** L2 CAPTAIN SUGAR 12/02 LR C857153
L TWO RANCH U 1/2 2/04 DNA 134A BT 7526A
CF DREAM CATCHER 914 LE C977250
COTTAGE FARM DNA US3000924 PV
** OASIS 655 LE C828198
COTTAGE FARM U 1/2 2/04 DNA 251620A BT 7628A
BLOCKBUSTER 841 LE C923817
COTTAGE FARM DNA US3000518 PV BT BBU453
8166 8166 LH C963647
CAIN
2-55 LH C876481
CASEY

INDIVIDUAL PERFORMANCE RECORDS								
	BW	WW	YW	SCROTAL	REA	%IMF	RIB FAT	RUMP FAT
RATIO	95	106	101		102	112	130	126
ADJ TRAIT	80	546	859		11.8	3.95	0.39	0.58

EXPECTED PROGENY DIFFERENCES							ULTRASOUND EPDs			
	BW	WW	YW	MILK	TM	SC	REA	%IMF	RIB FAT	RUMP FAT
EPD	1.2	17	28	0	8	0.3	0.09	0.1	0.01	0.04
ACC	0.5	0.47	0.41	0.14	-	0.24	PE	PE	PE	PE

** L2 CAPTAIN SUGAR 12/02 LR C857153
L TWO RANCH U 1/2 2/04 DNA 134A BT 7526A
CF DREAM CATCHER 914 LE C977250
COTTAGE FARM DNA US3000924 PV
** OASIS 655 LE C828198
COTTAGE FARM U 1/2 2/04 DNA 251620A BT 7628A
BLOCKBUSTER 841 LE C923817
COTTAGE FARM DNA US3000518 PV BT BBU453
CCC MS BLOCKBUSTER 897W6 897W6 LH C985675
CAIN
897 LE C923811
COTTAGE FARM DNA 343883A BT BBU343

INDIVIDUAL PERFORMANCE RECORDS								
	BW	WW	YW	SCROTAL	REA	%IMF	RIB FAT	RUMP FAT
RATIO	91	107	106		113	101	90	91
ADJ TRAIT	86	553	896		13.04	3.55	0.27	0.42

EXPECTED PROGENY DIFFERENCES							ULTRASOUND EPDs			
	BW	WW	YW	MILK	TM	SC	REA	%IMF	RIB FAT	RUMP FAT
EPD	2.6	21	32	-2	9	0.3				
ACC	0.51	0.48	0.42	0.15	-	0.26				

134

170Z

Open Heifers

Breeder: CAIN CATTLE CO.
 DOB: 3/22/2012 BBUNo. C1012515
 Sex: F
 Color: RED PAINT
 Horn: Polled



CATALYST 729 729 LT C775905
 CAIN U 1/00 BT 7216A

CAINS CATALYST 305W6 305W6 LH C985607
 CAIN

30/5 LH C916178
 WILMOTH & SONS DNA 343882A PV BT BBU344

L2 RED HAWK 91/01 LH C843994
 L TWO RANCH U 3/02 BT 7524C

17/10 LH C994811
 MORAN

HMST 3033S 3033S LE C937713
 THE HOMESTEAD

INDIVIDUAL PERFORMANCE RECORDS								
	BW	WW	YW	SCROTAL	REA	%IMF	RIB FAT	RUMP FAT
RATIO	92	113	98		84	104	137	137
ADJ TRAIT	85	580	832		9.73	3.67	0.41	0.63

EXPECTED PROGENY DIFFERENCES							ULTRASOUND EPDs			
	BW	WW	YW	MILK	TM	SC	REA	%IMF	RIB FAT	RUMP FAT
EPD	0.1	11	19	5	10	0.3				
ACC	0.45	0.44	0.39	0.14	-	0.24				

136

584Z

Open Heifers

Breeder: CAIN CATTLE CO.
 DOB: 3/25/2012 BBUNo. C1021501
 Sex: F
 Color: RED WHT U/L
 Horn: Polled



CJ'S SOUL MAN 168 RH C867835
 CLARK JONES FARMS U 1/2 2/04 DNA US3000427 BT 7670A

BLOCKBUSTER 841 LE C923817
 COTTAGE FARM DNA US3000518 PV BT BBU453

BOMB SHELL 396 LE C742387
 COTTAGE FARM U 1/2 10/00 DNA 313359A BT 6758B

MULTIPLE

5-84 LH C918767
 CASEY

2-2 LH C876663
 CASEY

INDIVIDUAL PERFORMANCE RECORDS								
	BW	WW	YW	SCROTAL	REA	%IMF	RIB FAT	RUMP FAT
RATIO	101	101	98		94	130	130	109
ADJ TRAIT	75	521	828		10.86	4.58	0.39	0.5

EXPECTED PROGENY DIFFERENCES							ULTRASOUND EPDs			
	BW	WW	YW	MILK	TM	SC	REA	%IMF	RIB FAT	RUMP FAT
EPD	-0.1	5	13	1	4	-0.2	0.17	0.2	0.07	0.13
ACC	0.5	0.44	0.39	0.15	-	0.24	PE	PE	PE	PE

135

360Z

Open Heifers

Breeder: CAIN CATTLE CO.
 DOB: 3/25/2012 BBUNo. C1020866
 Sex: F
 Color: RED
 Horn: Polled



BLOCKBUSTER 841 LE C923817
 COTTAGE FARM DNA US3000518 PV BT BBU453

RELIANT 8178 BE C974366
 CAIN DNA 605361A PV

550 LE C912923
 CLARK JONES FARMS U 5/06 DNA 9000724116 PV

MULTIPLE

3-60 LH C898841
 CASEY

0-63 LH C836850
 CASEY

INDIVIDUAL PERFORMANCE RECORDS								
	BW	WW	YW	SCROTAL	REA	%IMF	RIB FAT	RUMP FAT
RATIO	104	100	94		112	104	130	109
ADJ TRAIT	73	514	801		13	3.68	0.39	0.5

EXPECTED PROGENY DIFFERENCES							ULTRASOUND EPDs			
	BW	WW	YW	MILK	TM	SC	REA	%IMF	RIB FAT	RUMP FAT
EPD	0	7	17	2	6	0	0.2	0.1	0.02	0.1
ACC	0.44	0.42	0.34	0.08	-	0.19	PE	PE	PE	PE

137

015Z2

Open Heifers

Breeder: CAIN CATTLE CO.
 DOB: 4/2/2012 BBUNo. C1020855
 Sex: F
 Color: RED
 Horn: Scurs



** L2 CAPTAIN SUGAR 12/02 LR C857153
 L TWO RANCH U 1/2 2/04 DNA 134A BT 7526A

CF DREAM CATCHER 914 LE C977250
 COTTAGE FARM DNA US3000924 PV

** OASIS 655 LE C828198
 COTTAGE FARM U 1/2 2/04 DNA 251620A BT 7628A

DOC 2D-0C81 LE C893778
 CHANNAROCK FARM U 1/2 8/04 DNA 308374A

8015 8015 LH C963282
 CAIN

8-73 LH C788849
 CASEY

INDIVIDUAL PERFORMANCE RECORDS								
	BW	WW	YW	SCROTAL	REA	%IMF	RIB FAT	RUMP FAT
RATIO	75	96	94		91	93	40	54
ADJ TRAIT	96	496	797		10.54	3.29	0.12	0.25

EXPECTED PROGENY DIFFERENCES							ULTRASOUND EPDs			
	BW	WW	YW	MILK	TM	SC	REA	%IMF	RIB FAT	RUMP FAT
EPD	2.3	31	46	-3	13	0.8	0.12	-0.1	-0.06	-0.05
ACC	0.5	0.47	0.41	0.15	-	0.24	PE	PE	PE	PE

138 857Z Open Heifers

Breeder: CAIN CATTLE CO.
 DOB: 4/2/2012 BBUNo. C1012513
 Sex: F
 Color: RED
 Horn: Scurs



**** L2 CAPTAIN SUGAR 12/02 LR C857153**
L TWO RANCH U 1/2 2/04 DNA 134A BT 7526A

CF DREAM CATCHER 914 LE C977250
COTTAGE FARM DNA US3000924 PV

**** OASIS 655 LE C828198**
COTTAGE FARM U 1/2 2/04 DNA 251620A BT 7628A

8-76 LH C788040
CASEY U 9/08 DNA 282A BT 8323A

8857 8857 LH C969532
CAIN

*** TIGER BABY 684 LE C725195**
HARROD FARMS U 1/2 6/98 DNA 1152A BT 6219B

INDIVIDUAL PERFORMANCE RECORDS								
	BW	WW	YW	SCROTAL	REA	%IMF	RIB FAT	RUMP FAT
RATIO	77	103	96		108	71	53	78
ADJ TRAIT	95	532	813		12.53	2.49	0.16	0.36

EXPECTED PROGENY DIFFERENCES						ULTRASOUND EPDs				
	BW	WW	YW	MILK	TM	SC	REA	%IMF	RIB FAT	RUMP FAT
EPD	3.5	23	35	2	14	0.6	0.17	-0.1	-0.03	-0.14
ACC	0.5	0.45	0.39	0.14	-	0.23	PE	PE	PE	PE

140 529Z Open Heifers

Breeder: CAIN CATTLE CO.
 DOB: 4/7/2012 BBUNo. C1021498
 Sex: F
 Color: RED
 Horn: Polled



BLOCKBUSTER 841 LE C923817
COTTAGE FARM DNA US3000518 PV BT BBU453

RELIANT 8178 BE C974366
CAIN DNA 605361A PV

550 LE C912923
CLARK JONES FARMS U 5/06 DNA 9000724116 PV

MULTIPLE

5-29 LH C918527
CASEY

3-37 LH C898818
CASEY

INDIVIDUAL PERFORMANCE RECORDS								
	BW	WW	YW	SCROTAL	REA	%IMF	RIB FAT	RUMP FAT
RATIO	107	101	104		108	134	113	87
ADJ TRAIT	71	520	881		12.45	4.71	0.34	0.4

EXPECTED PROGENY DIFFERENCES						ULTRASOUND EPDs				
	BW	WW	YW	MILK	TM	SC	REA	%IMF	RIB FAT	RUMP FAT
EPD	-0.1	6	13	2	5	0	0.16	0.2	0.06	0.1
ACC	0.44	0.39	0.33	0.08	-	0.17	PE	PE	PE	PE

139 305Z3 Open Heifers

Breeder: CAIN CATTLE CO.
 DOB: 4/3/2012 BBUNo. C1019373
 Sex: F
 Color: RED STAR FACE WHT U/L
 Horn: Scurs



**** L2 CAPTAIN SUGAR 12/02 LR C857153**
L TWO RANCH U 1/2 2/04 DNA 134A BT 7526A

CF DREAM CATCHER 914 LE C977250
COTTAGE FARM DNA US3000924 PV

**** OASIS 655 LE C828198**
COTTAGE FARM U 1/2 2/04 DNA 251620A BT 7628A

CATALYST 729 729 LT C775905
CAIN U 1/00 BT 7216A

CCC MISS CATALYST 305W5 305W5 LH C985592
CAIN

30/5 LH C916178
WILMOTH & SONS DNA 343882A PV BT BBU344

INDIVIDUAL PERFORMANCE RECORDS								
	BW	WW	YW	SCROTAL	REA	%IMF	RIB FAT	RUMP FAT
RATIO	96	102	99		106	94	77	98
ADJ TRAIT	82	526	843		12.31	3.3	0.23	0.45

EXPECTED PROGENY DIFFERENCES						ULTRASOUND EPDs				
	BW	WW	YW	MILK	TM	SC	REA	%IMF	RIB FAT	RUMP FAT
EPD	0.5	18	30	3	12	0.5	0.03	0.1	0	-0.05
ACC	0.51	0.48	0.42	0.15	-	0.26	PE	PE	PE	PE

141 137Z Open Heifers

Breeder: CAIN CATTLE CO.
 DOB: 4/8/2012 BBUNo. C1019377
 Sex: F
 Color: RED WHT U/L
 Horn: Horns



**** L2 CAPTAIN SUGAR 12/02 LR C857153**
L TWO RANCH U 1/2 2/04 DNA 134A BT 7526A

CF DREAM CATCHER 914 LE C977250
COTTAGE FARM DNA US3000924 PV

**** OASIS 655 LE C828198**
COTTAGE FARM U 1/2 2/04 DNA 251620A BT 7628A

S & D 456 RH C911212
CLARK JONES

8137 8137 LH C961650
CAIN

2-34 LH C876598
CASEY

INDIVIDUAL PERFORMANCE RECORDS								
	BW	WW	YW	SCROTAL	REA	%IMF	RIB FAT	RUMP FAT
RATIO	87	104	94		103	102	90	76
ADJ TRAIT	87	536	800		11.96	3.61	0.27	0.35

EXPECTED PROGENY DIFFERENCES						ULTRASOUND EPDs				
	BW	WW	YW	MILK	TM	SC	REA	%IMF	RIB FAT	RUMP FAT
EPD	2.1	15	27	0	8	0.4	0.16	0.2	0.07	-0.08
ACC	0.5	0.47	0.41	0.14	-	0.23	PE	PE	PE	PE

142

573Z

Open Heifers

Breeder: CAIN CATTLE CO.
 DOB: 4/10/2012 BBUNo. C1021499
 Sex: F
 Color: RED WHT U/L
 Horn: Polled

**143**

118Z

Open Heifers

Breeder: CAIN CATTLE CO.
 DOB: 4/16/2012 BBUNo. C1024691
 Sex: F
 Color: RED
 Horn: Horns



BLOCKBUSTER 841 LE C923817
 COTTAGE FARM DNA US3000518 PV BT BBU453

RELIANT 8178 BE C974366
 CAIN DNA 605361A PV

550 LE C912923
 CLARK JONES FARMS U 5/06 DNA 9000724116 PV

MULTIPLE

5-73 LH C918778
 CASEY

2-90 LH C876649
 CASEY

INDIVIDUAL PERFORMANCE RECORDS

	BW	WW	YW	SCROTAL	REA	%IMF	RIB FAT	RUMP FAT
RATIO	109	90	100		96	99	110	133
ADJ TRAIT	69	463	850		11.11	3.51	0.33	0.61

EXPECTED PROGENY DIFFERENCES

ULTRASOUND EPDs

	BW	WW	YW	MILK	TM	SC	REA	%IMF	RIB FAT	RUMP FAT
EPD	-0.3	1	10	1	2	-0.2				
ACC	0.44	0.39	0.33	0.08	-	0.17				

CATALYST 729 729 LT C775905
 CAIN U 1/00 BT 7216A

CAINS CATALYST 305W6 305W6 LH C985607
 CAIN

30/5 LH C916178
 WILMOTH & SONS DNA 343882A PV BT BBU344

L BAR 6190 6190 LH C935644
 L BAR

FRENZEL 0118 0118 LH C1000430
 F BAR U 1/1 2/11

8210 LH C967477
 F BAR

INDIVIDUAL PERFORMANCE RECORDS

	BW	WW	YW	SCROTAL	REA	%IMF	RIB FAT	RUMP FAT
RATIO	100	100						
ADJ TRAIT	74	534						

EXPECTED PROGENY DIFFERENCES

ULTRASOUND EPDs

	BW	WW	YW	MILK	TM	SC	REA	%IMF	RIB FAT	RUMP FAT
EPD	-1.6	5	8	6	8	0.2				
ACC	PE	PE	PE	PE	PE	PE				